





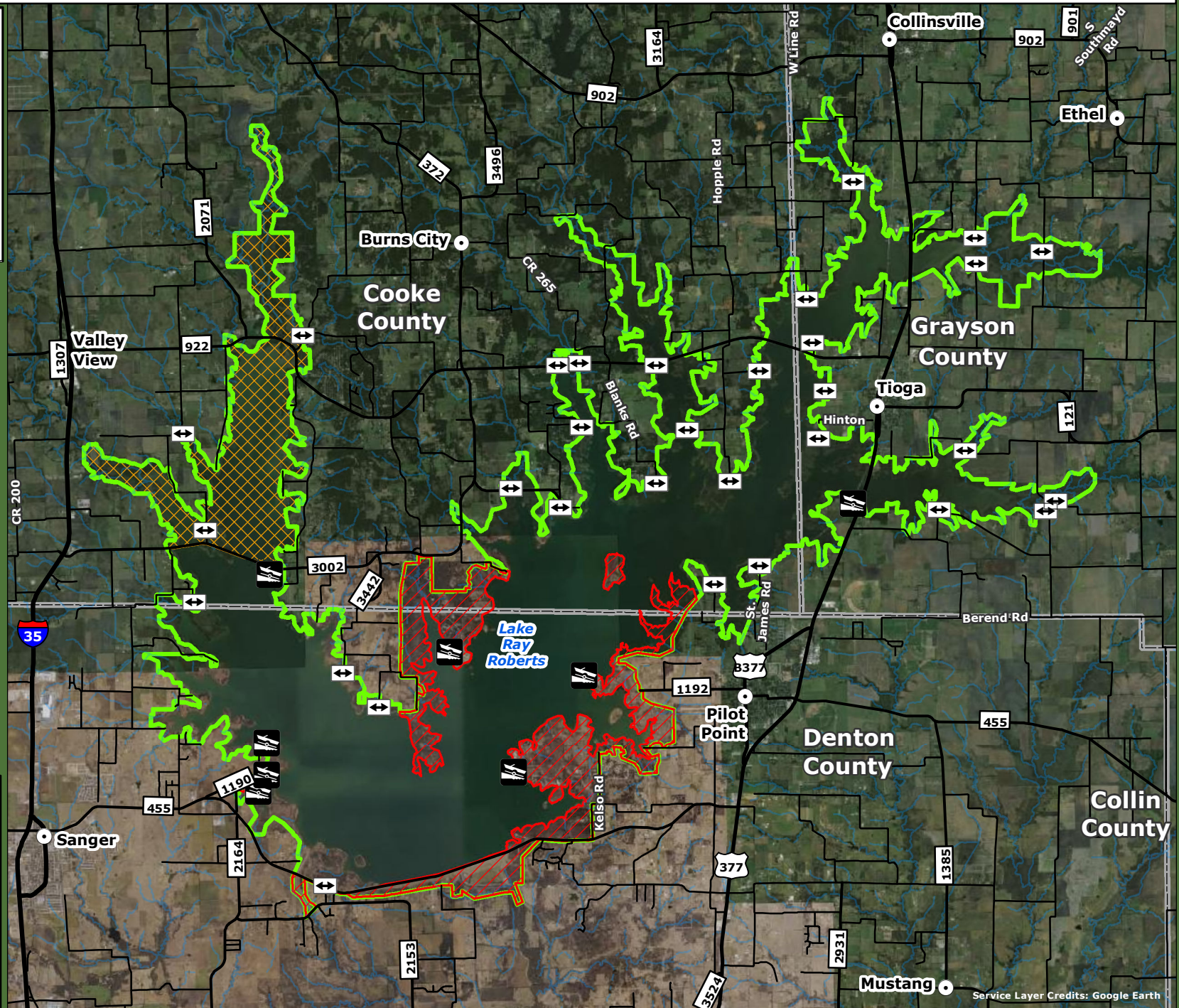


A horizontal number line representing distance in miles. It has three major tick marks labeled 0, 1.5, and 3. The word "Miles" is written at the right end of the line.



-  **Boat Ramp**
-  **Designated Access Point**
-  **Property Boundary**
-  **No Hunt Zone**
-  **Waterfowl Sanctuary**
-  **County**



*** Annual Public Hunting Permit Required ***

Refer to Legal Gamebox in this year's Public Hunting Map Booklet (released in August) for hunting information & regulations

Map compiled by the Texas Parks & Wildlife Department. No claims are made to the accuracy of the data or to the suitability of the data to a particular use. This is not a surveyed product.