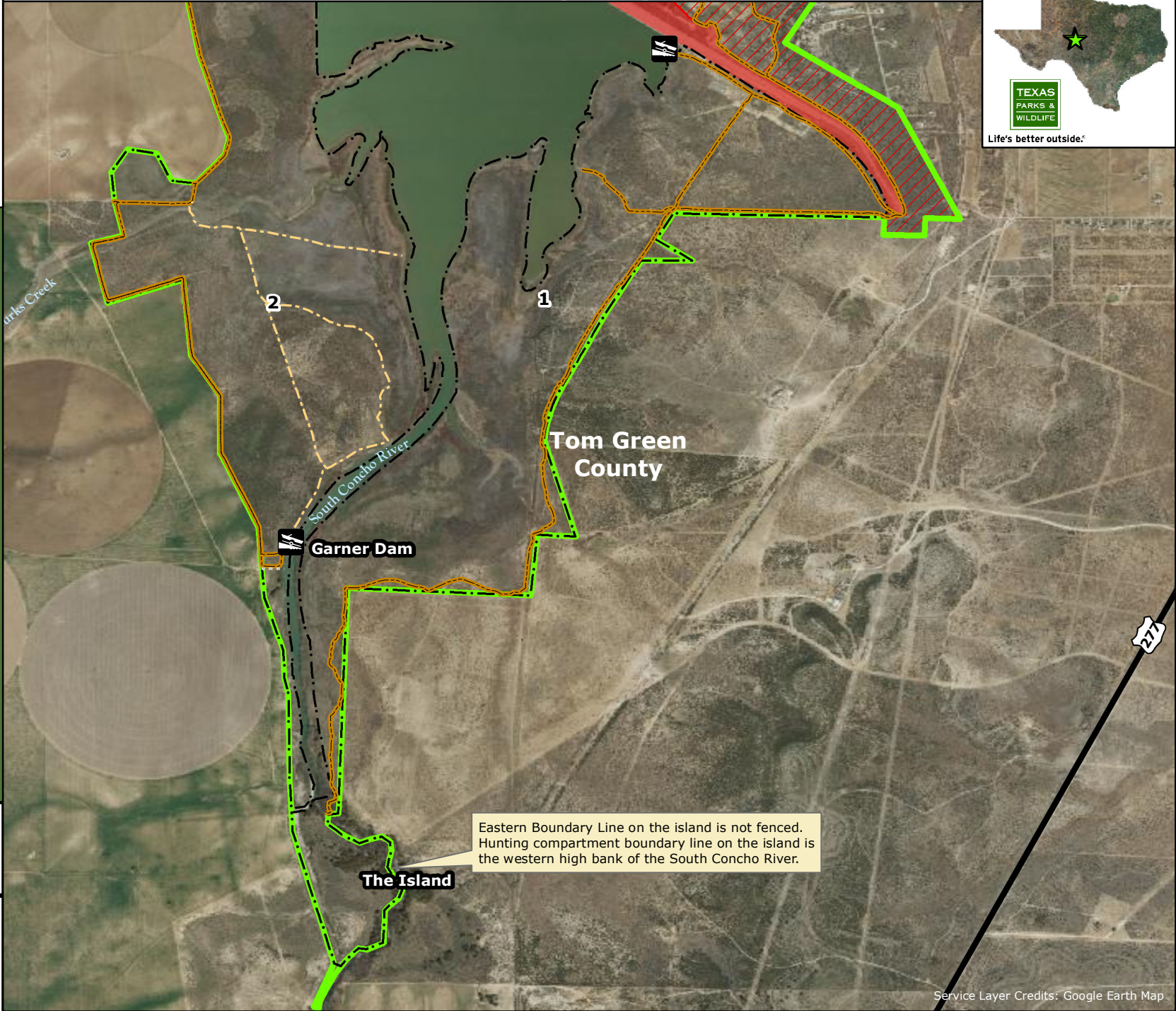


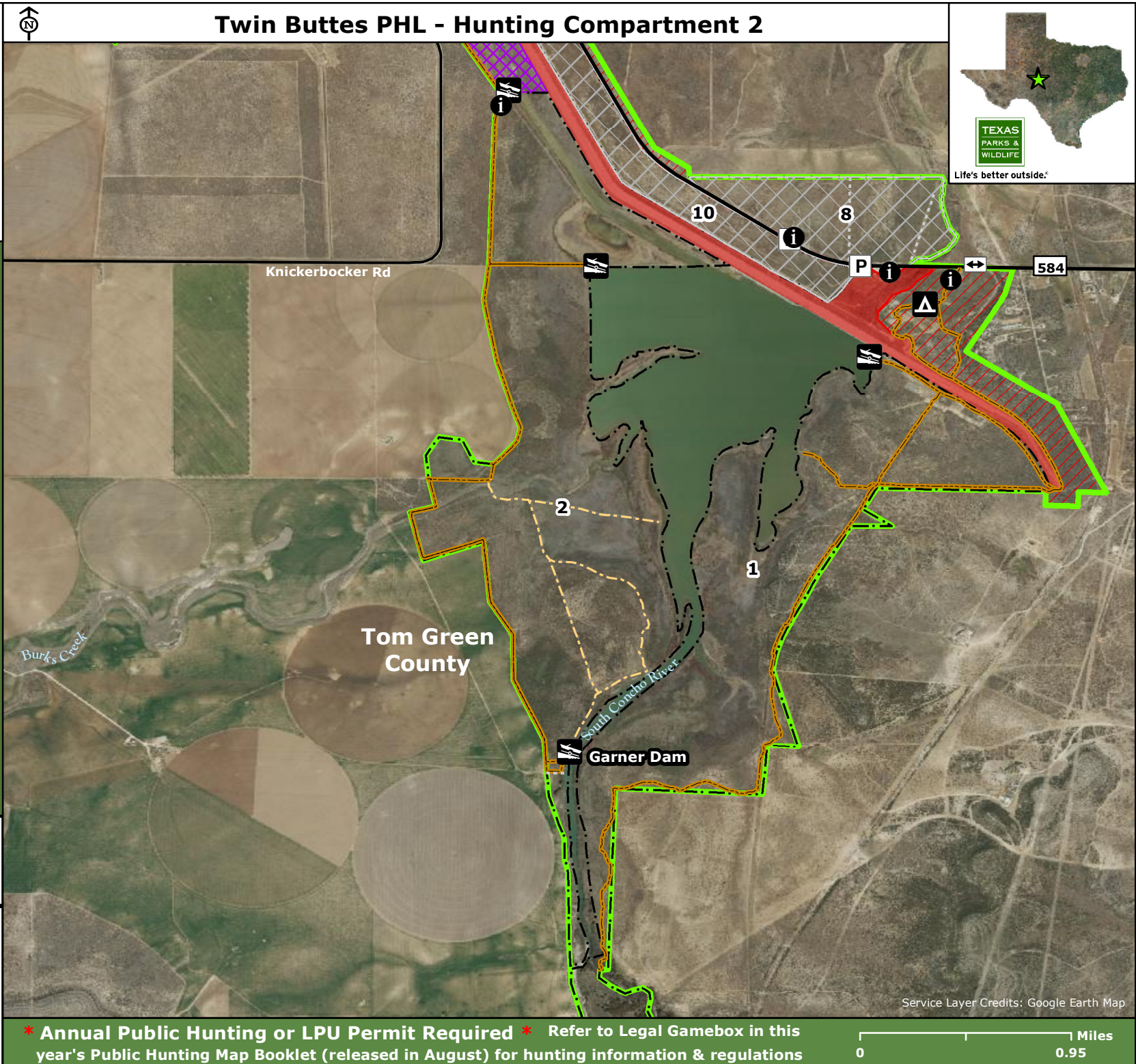
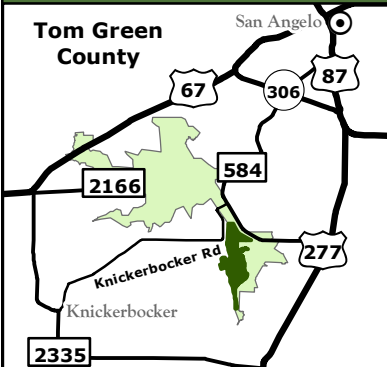
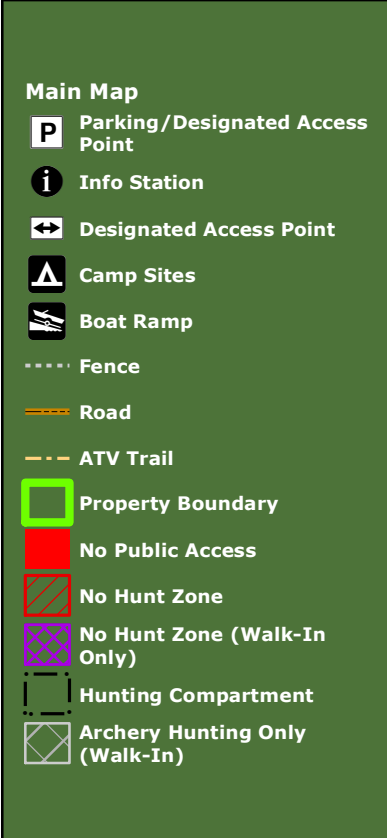
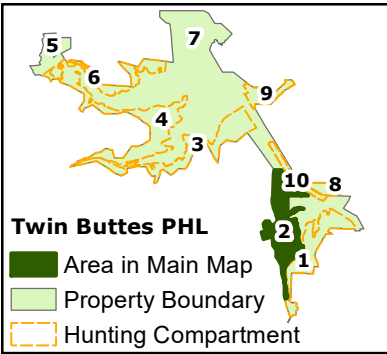
# Twin Buttes PHL - Hunting Compartment 1



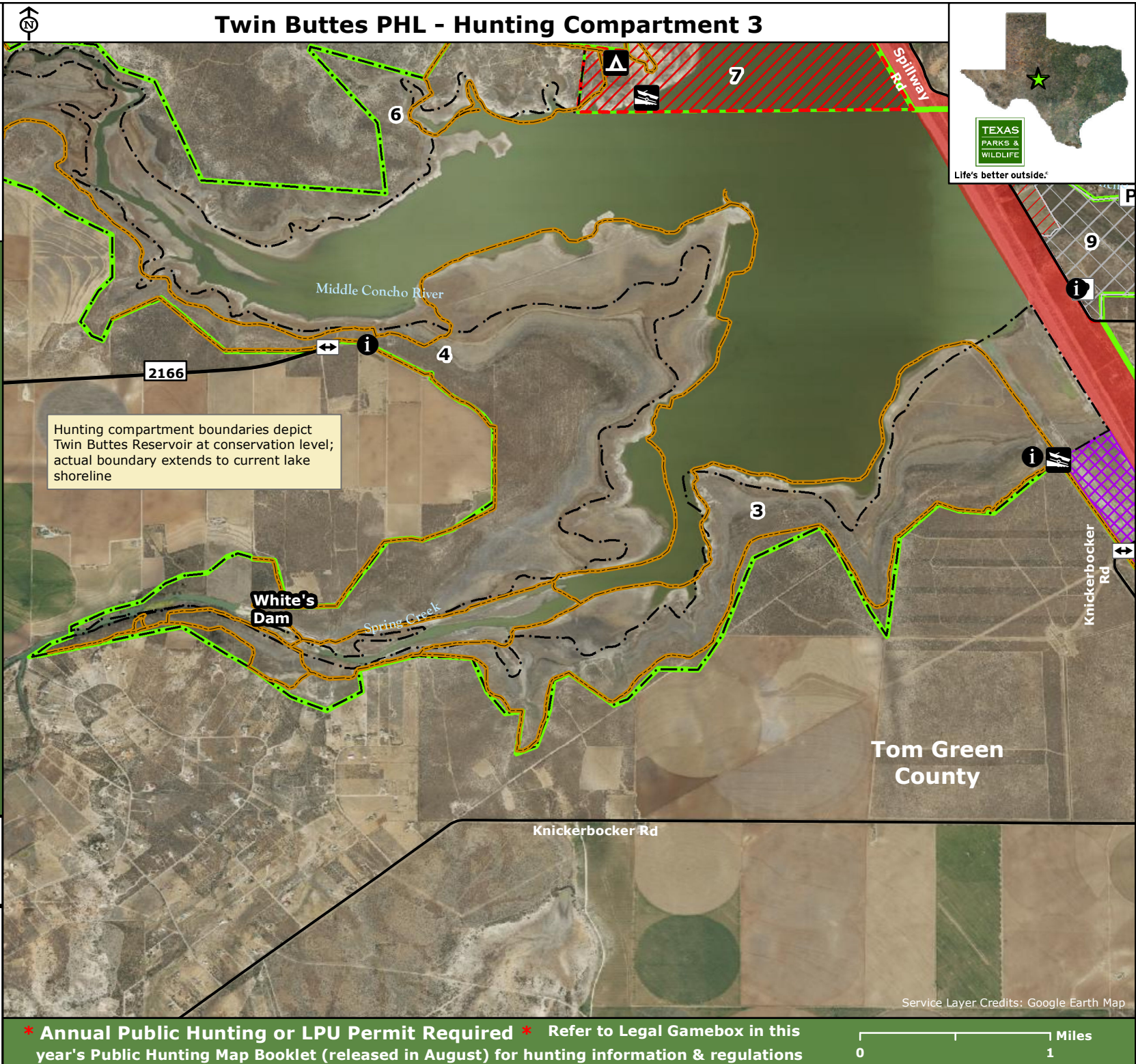
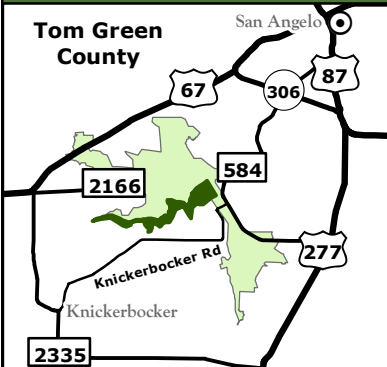
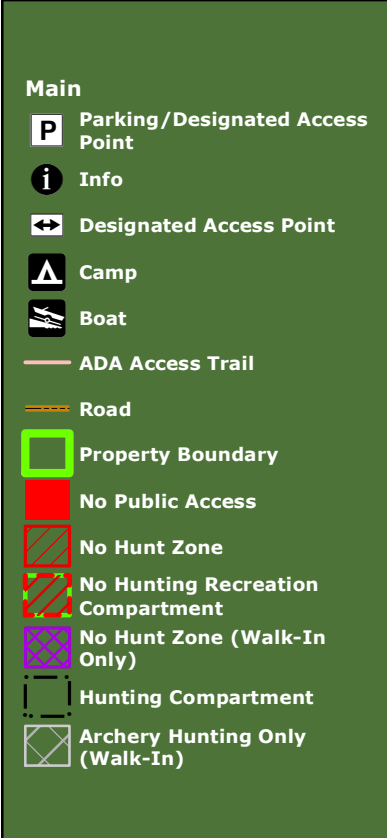
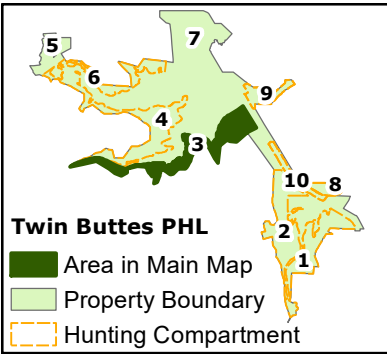
**\* Annual Public Hunting or LPU Permit Required \* Refer to Legal Gamebox in this year's Public Hunting Map Booklet (released in August) for hunting information & regulations**



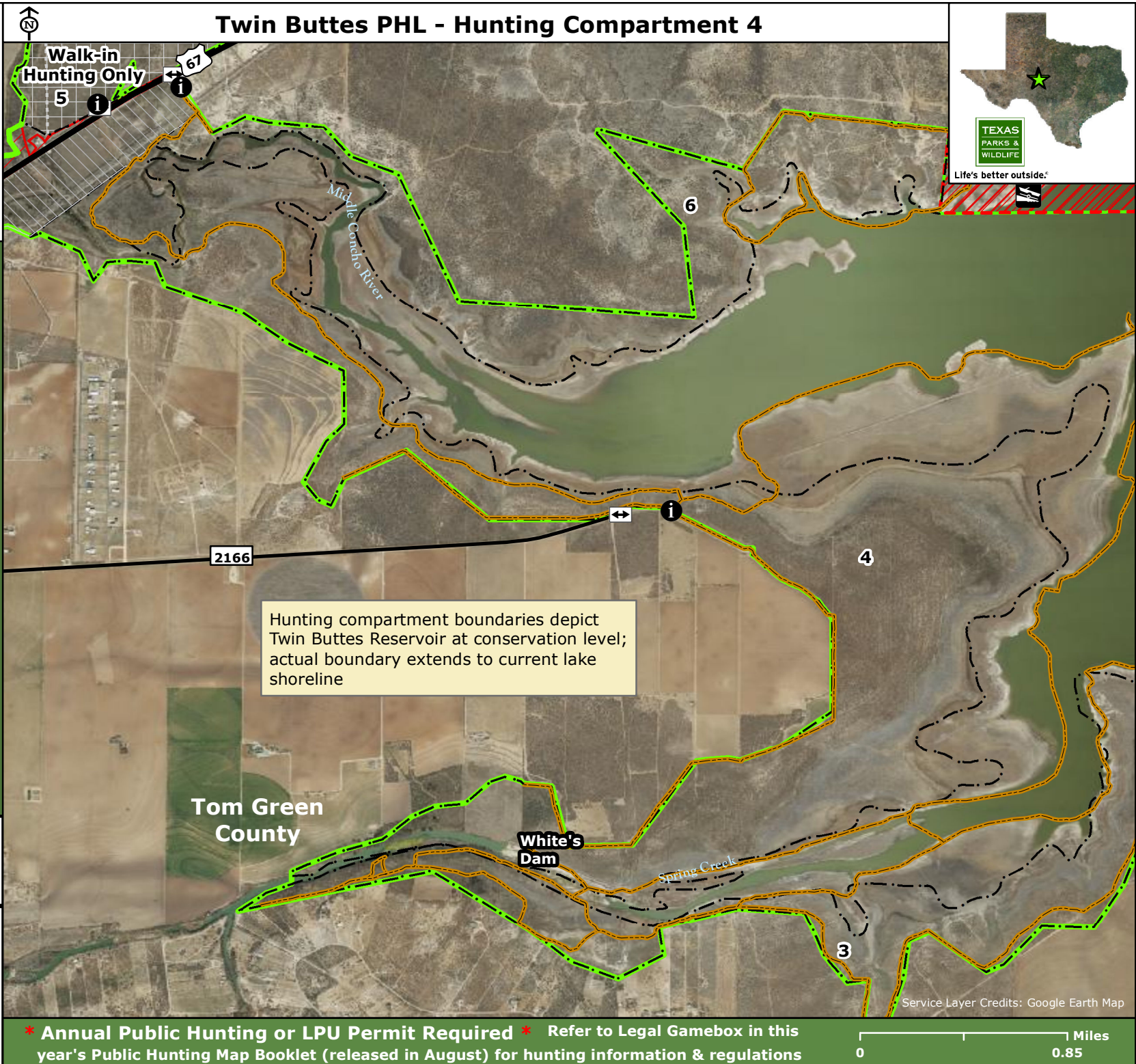
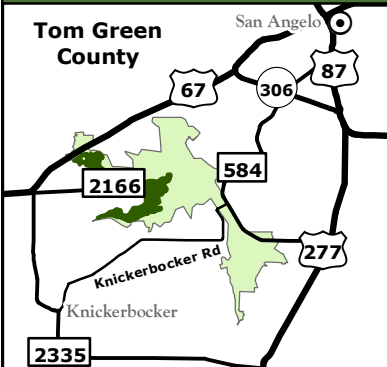
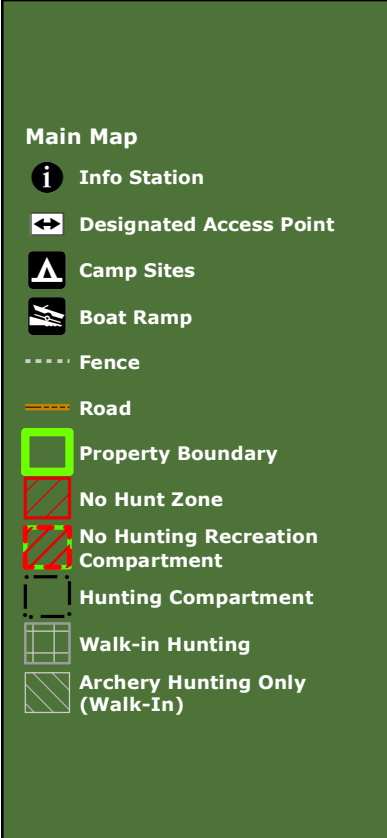
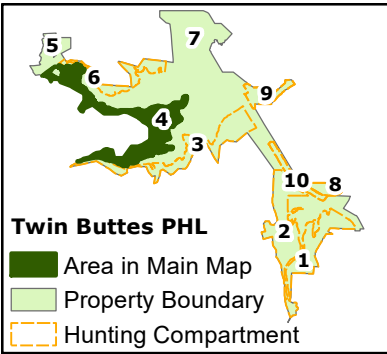




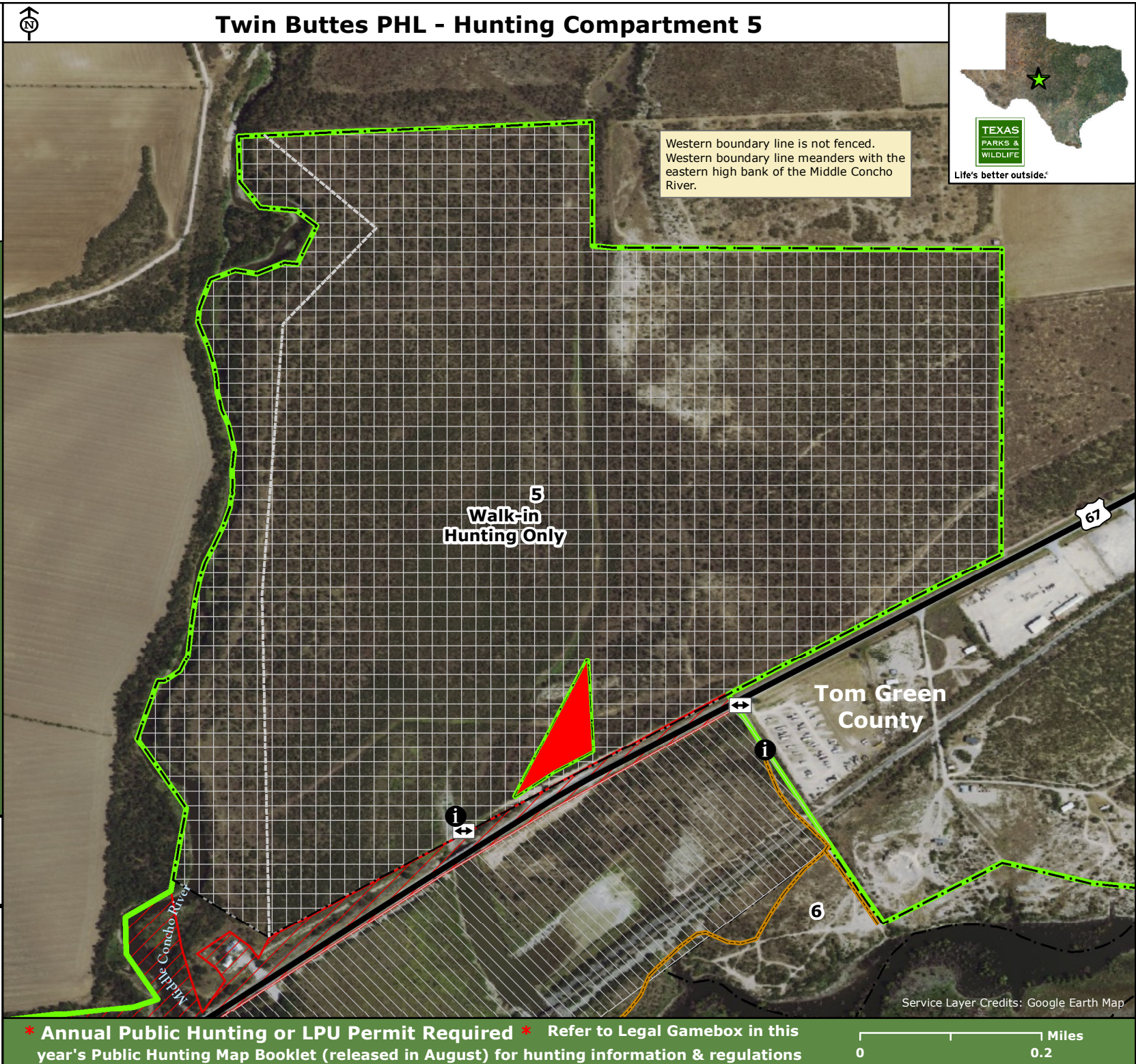
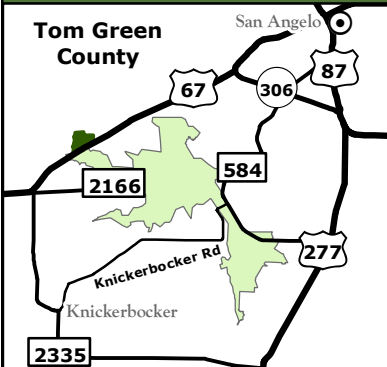
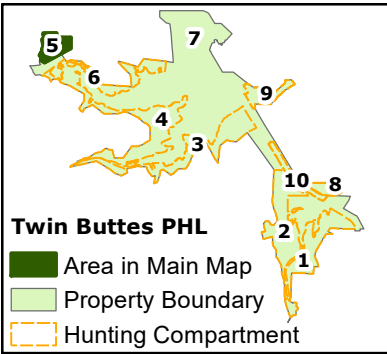






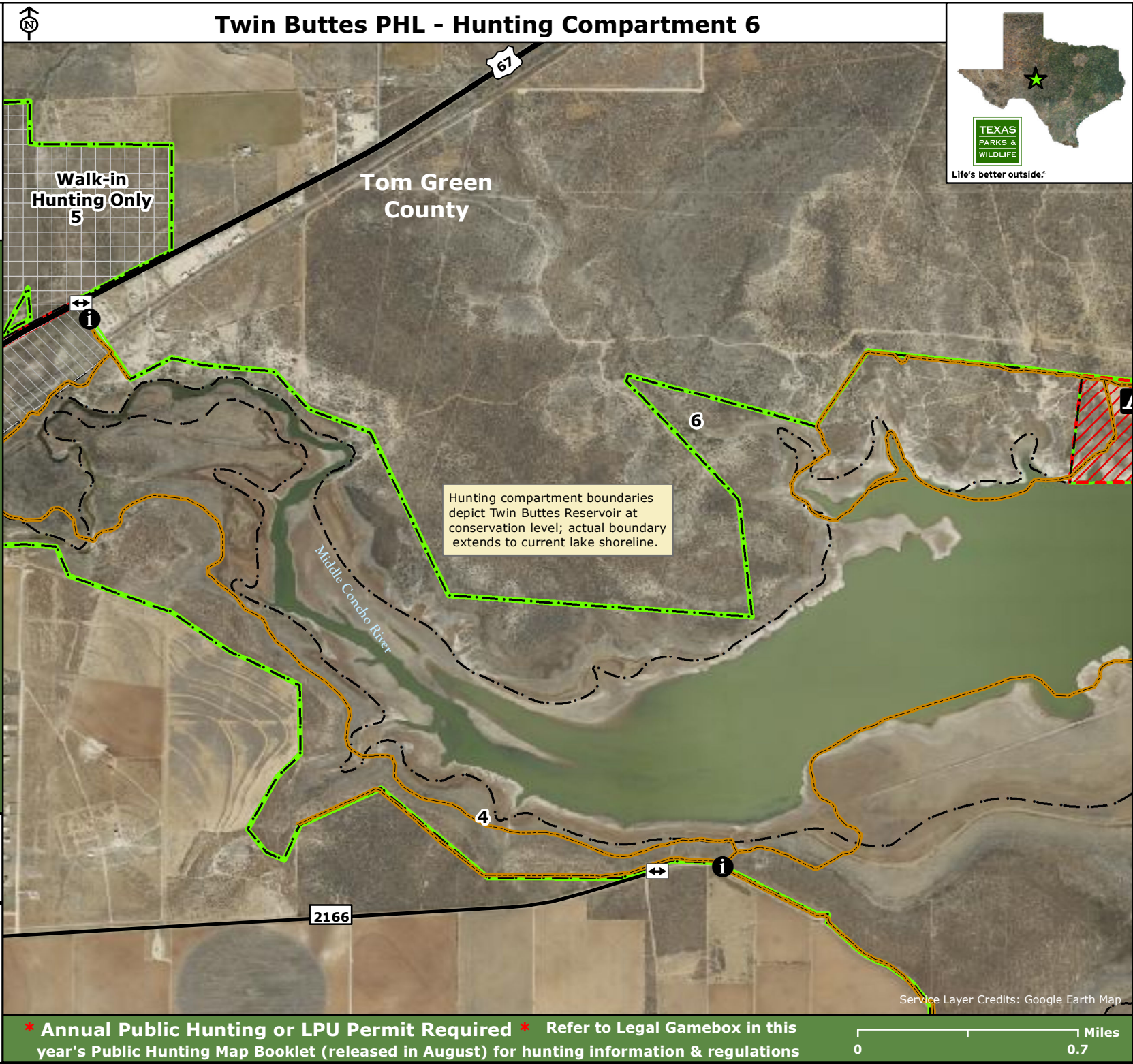
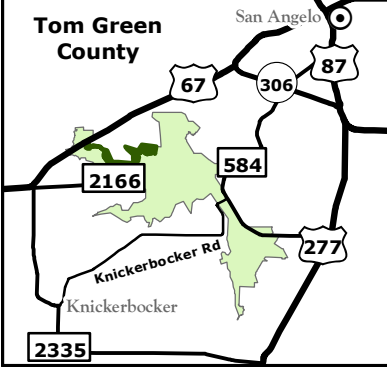
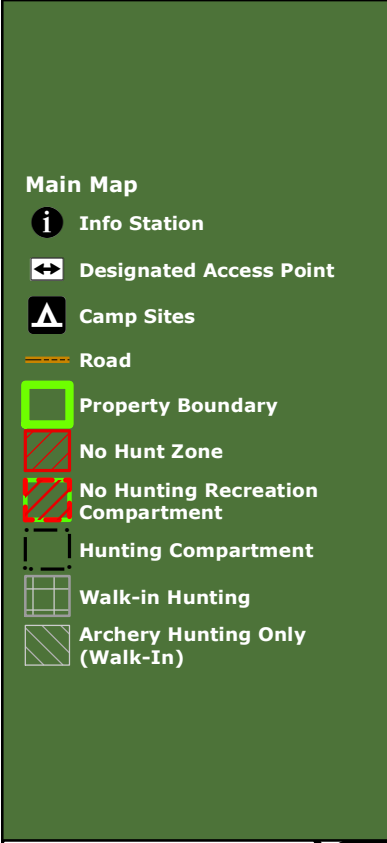
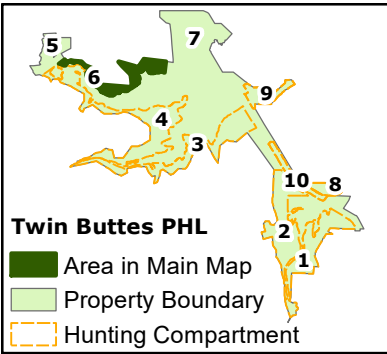






\* Annual Public Hunting or LPU Permit Required \* Refer to Legal Gamebox in this year's Public Hunting Map Booklet (released in August) for hunting information & regulations

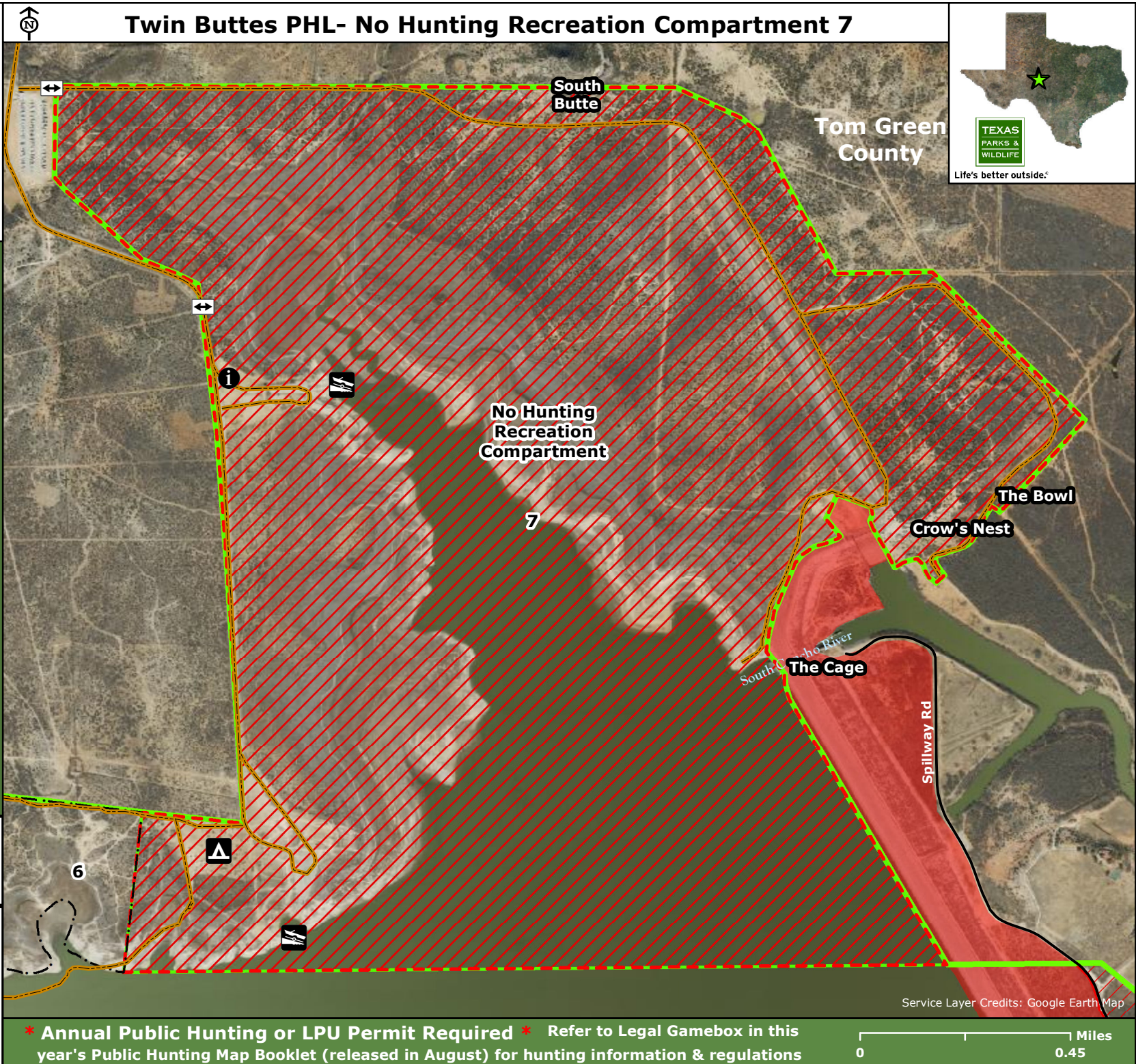
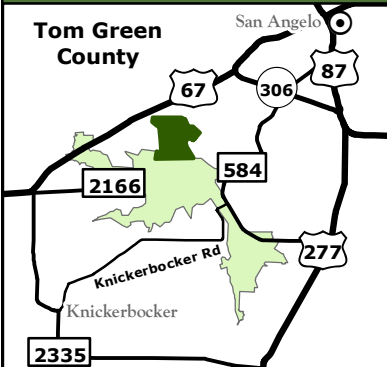
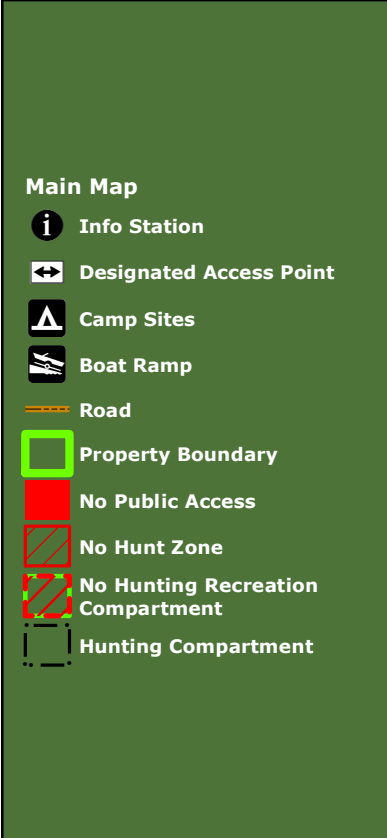
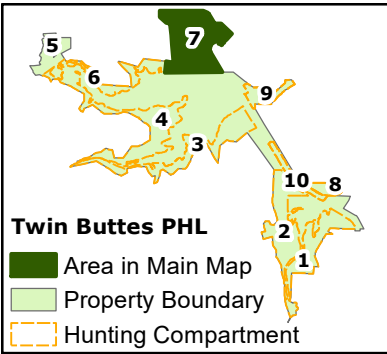




**\* Annual Public Hunting or LPU Permit Required \* Refer to Legal Gamebox in this year's Public Hunting Map Booklet (released in August) for hunting information & regulations**

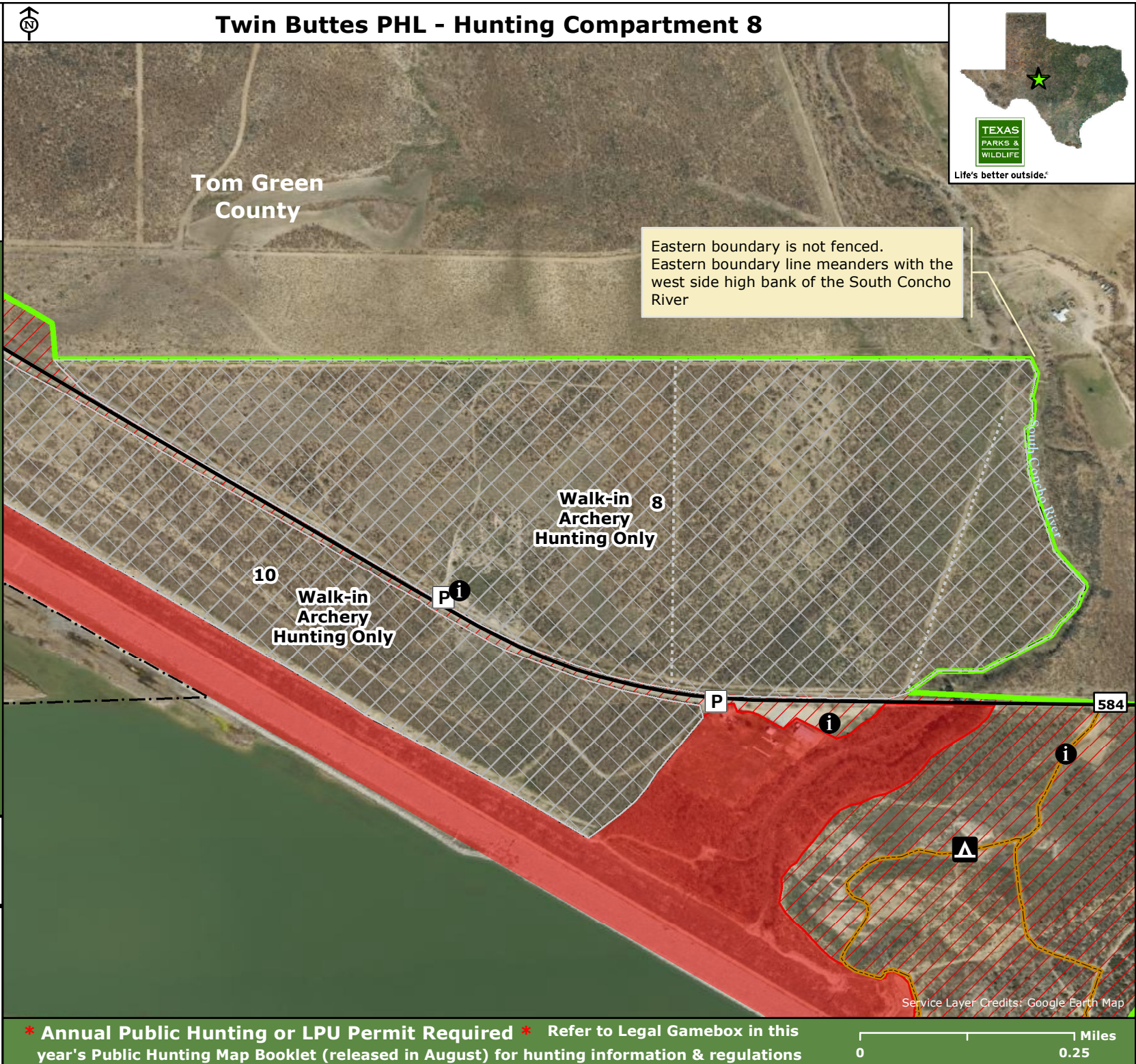
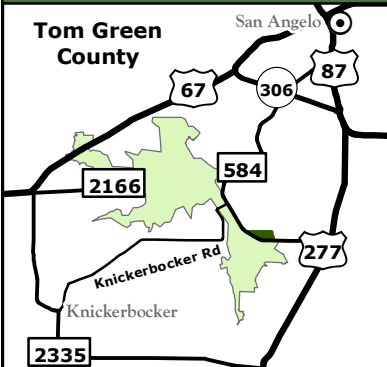
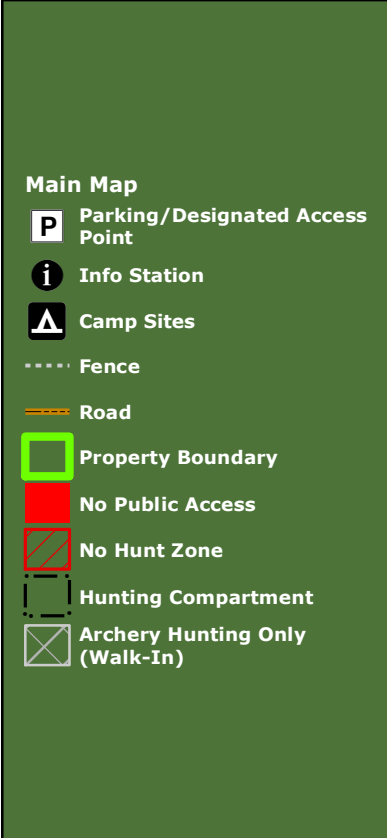
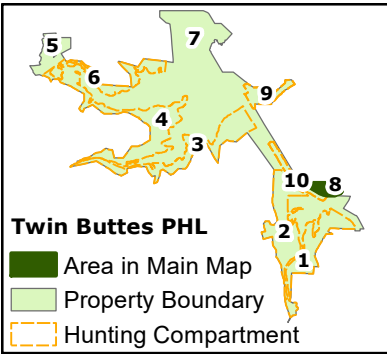






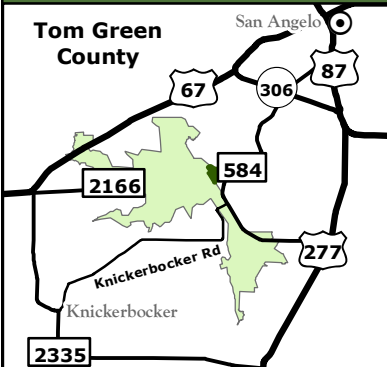
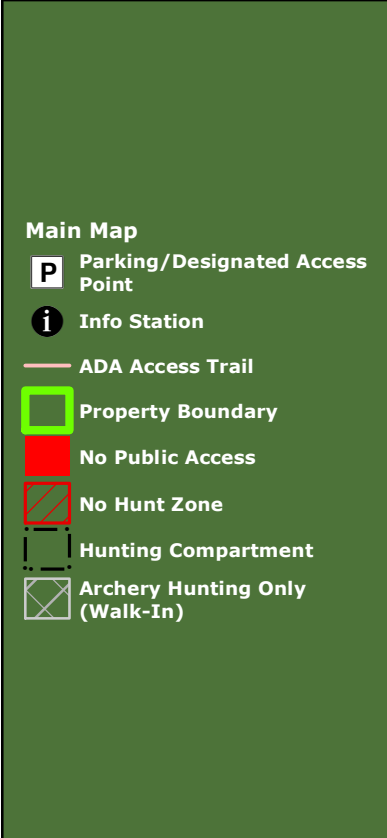
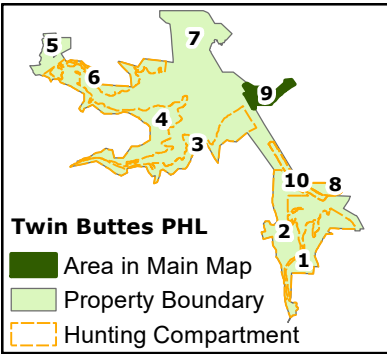
\* Annual Public Hunting or LPU Permit Required \* Refer to Legal Gamebox in this year's Public Hunting Map Booklet (released in August) for hunting information & regulations





**\* Annual Public Hunting or LPU Permit Required \* Refer to Legal Gamebox in this year's Public Hunting Map Booklet (released in August) for hunting information & regulations**





# Twin Buttes PHL - Hunting Compartment 9



**\* Annual Public Hunting or LPU Permit Required \* Refer to Legal Gamebox in this year's Public Hunting Map Booklet (released in August) for hunting information & regulations**





