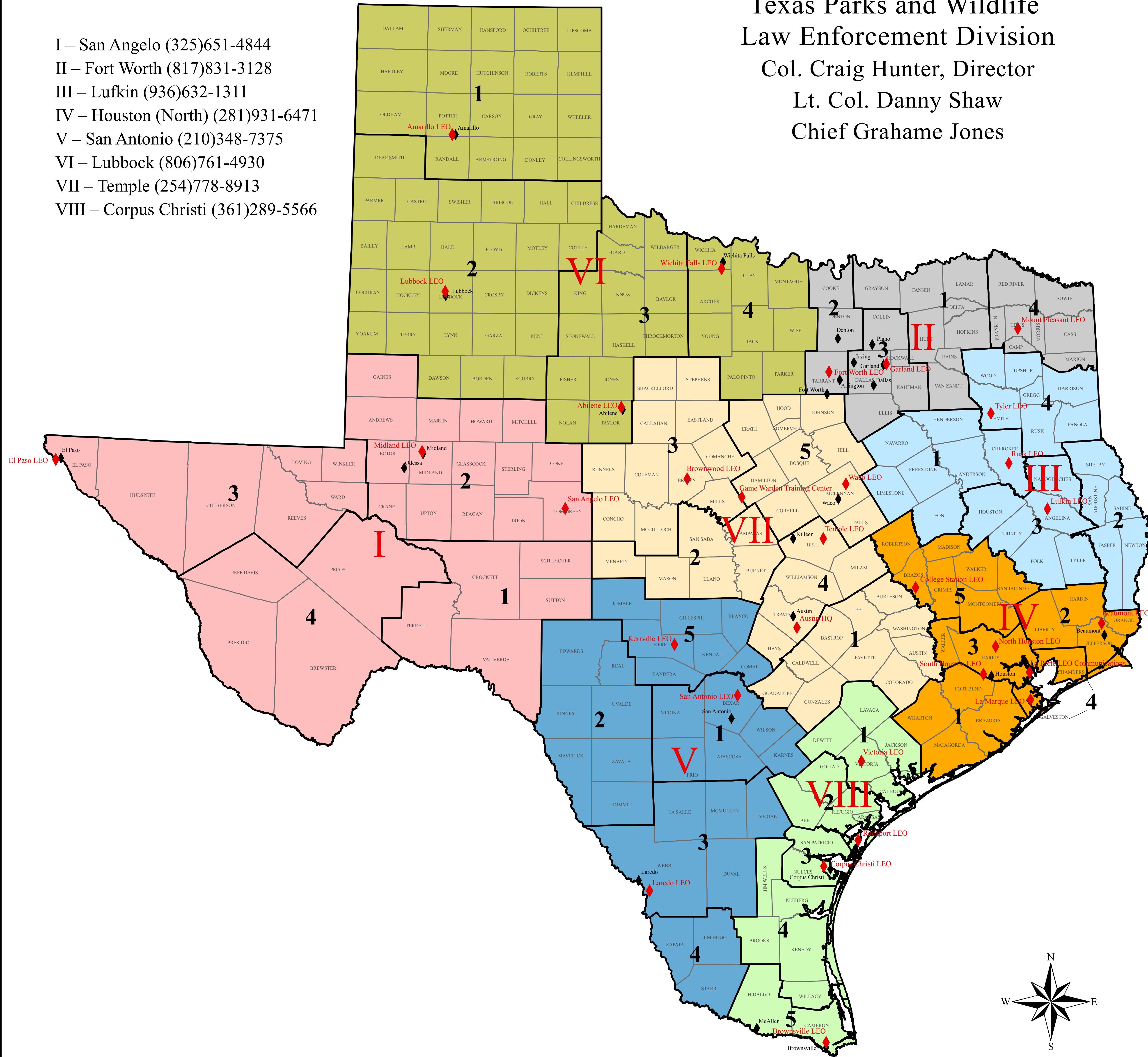


Texas Parks and Wildlife  
Law Enforcement Division  
Col. Craig Hunter, Director  
Lt. Col. Danny Shaw  
Chief Grahame Jones

- I – San Angelo (325)651-4844
- II – Fort Worth (817)831-3128
- III – Lufkin (936)632-1311
- IV – Houston (North) (281)931-6471
- V – San Antonio (210)348-7375
- VI – Lubbock (806)761-4930
- VII – Temple (254)778-8913
- VIII – Corpus Christi (361)289-5566



30 December 2013

Projection: Texas Statewide Mapping System

Map compiled by the Texas Parks and Wildlife Department GIS Lab. No Claims are made to the accuracy of the data or to the suitability of the data for a particular use.

Life's better outside.®