

TEXAS

PARKS &

WILDLIFE

2014-2015 Statewide Process

- Scoping meetings January 7-9
- TPWD Commission meeting January 22-23
- If decided, proposals published in TX Register
- Statewide Public Hearings
- TPWD Commission meeting March 26-27
- If enacted, changes effective September 1, 2014

Southern Flounder

Current Flounder Regulations

- As of Sept 1, 2009:
 - Recreational possession limit reduced to 5, except in November when it is 2
 - Commercial possession limit reduced to 30, except in November when it is 2
 - No gigging allowed in November

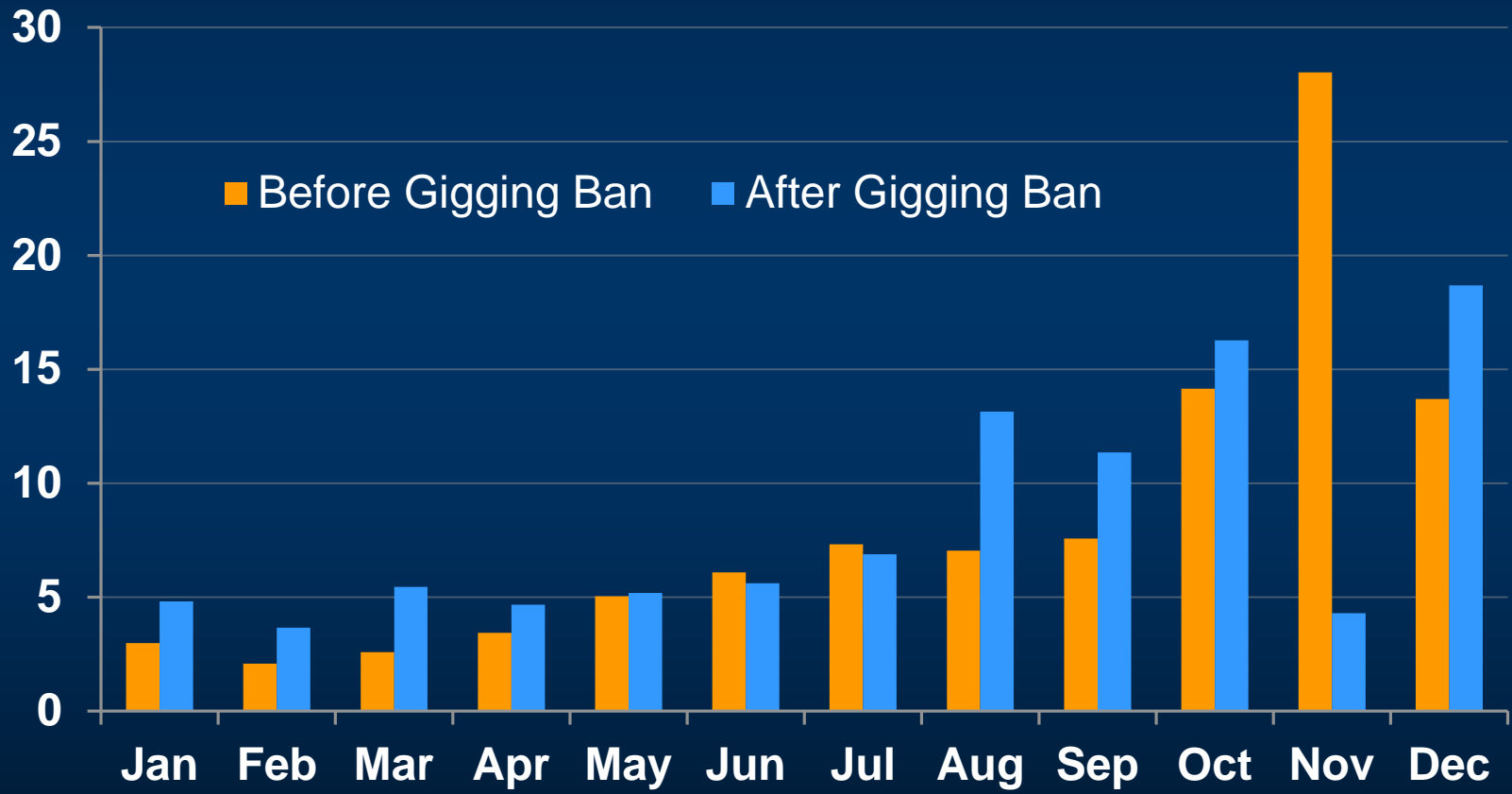
Flounder Management Options

- Depending on the arrival of the first cold fronts, the flounder run may occur earlier or later than the month of November
 - Extend the November regulations for additional conservation of spawning flounder
 - Include a sunset provision
 - No action – maintain status quo

Flounder Management Options

- Extend the November regulations to:
 - Last week of October
 - Last two weeks of October
 - First week of December
 - First two weeks of December
 - Combinations of 1-4 above
 - Entire month of December

Percent of Commercial Flounder Harvest by Month



Percent of Recreational Flounder Harvest by Month

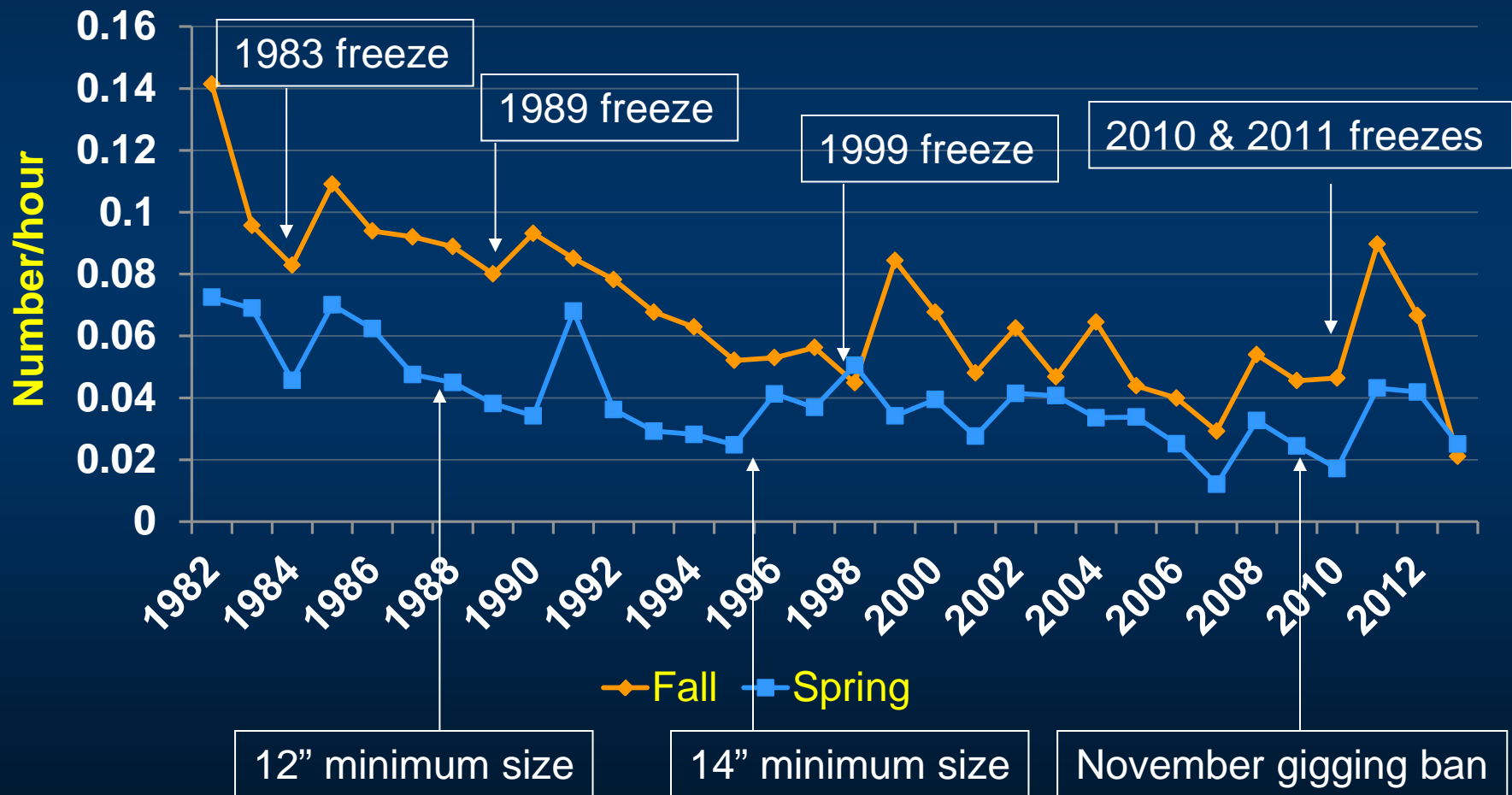


Daytime landings only

Benefits from 2009 Regulations

- Commercial landings reduced 30% in first year
- Recreational landings reduced 32% in first year
- November market glut eliminated
- Reduces opportunity for sport gig fishery to illegally sell their catch
- Flounder population increased 180% in 3 years

Coastwide Gill Nets Southern Flounder



Predicted Effects of Options

Closure	Effect on Landings	Effect on Spawning Biomass
Last week of October	-1.5%	+2.9%
Last 2 weeks of October	-3%	+6.0%
First week of December	-3.5%	+7.0%
Last week of October and first week of December	-5%	+10%
First 2 weeks of December	-7%	+14.1%
Last 2 weeks of October and first 2 weeks of December	-10%	+20.4%
December	-14%	+29.0%

Spotted Seatrout

Current Regulations

- 10 fish daily bag
- 15" minimum size
- One over 25" per person per day, counts as part of daily bag
- Special regulation for the LLM (2007)
 - Reduced bag limit to 5 fish
 - Possession limit equals bag limit

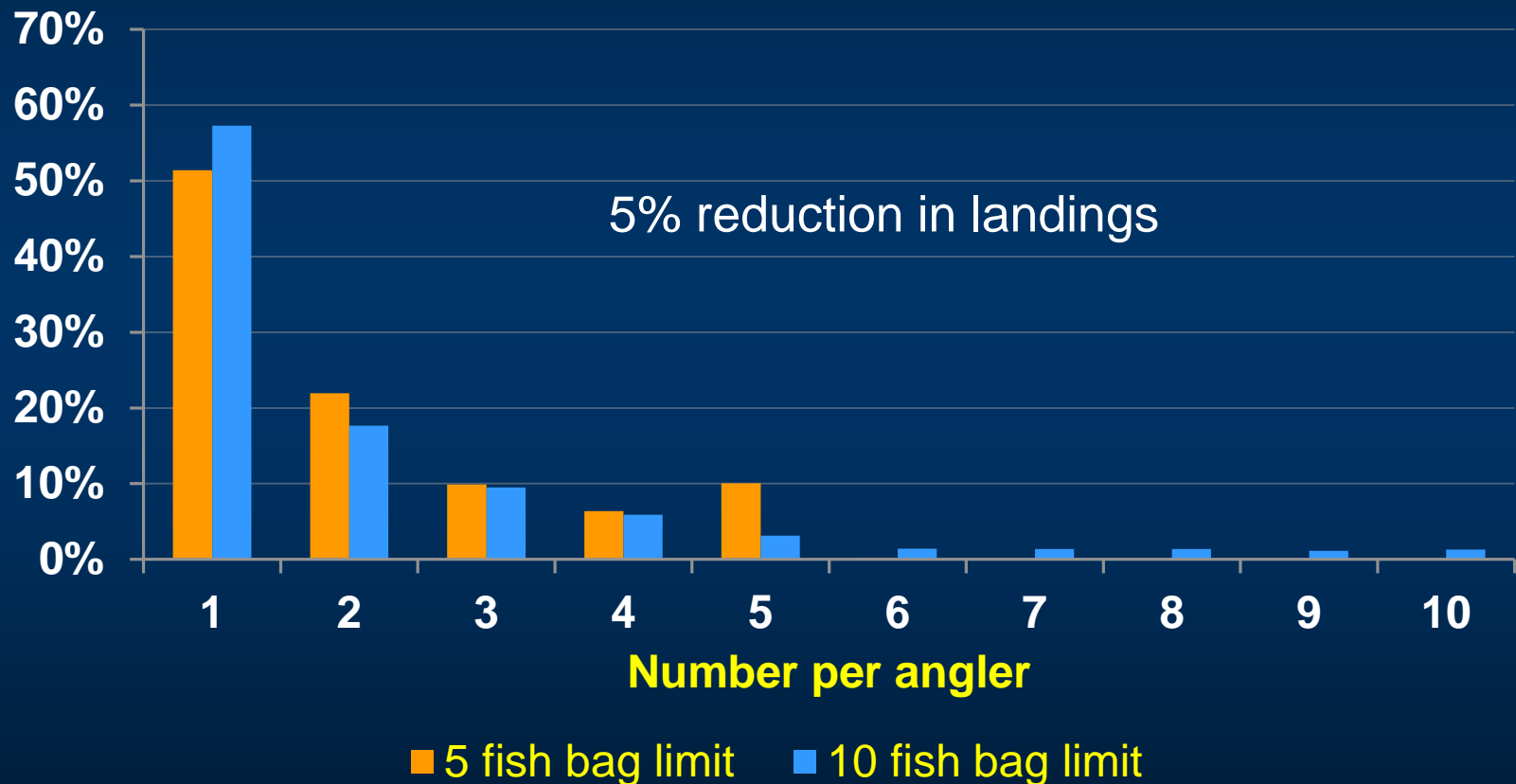
SST Management Options

- Extend the 5-fish bag and possession limit along the entire Texas coast
- Extend the 5-fish bag and possession limit along the coast from the upper Laguna Madre to East Matagorda Bay (excludes Galveston Bay and Sabine Lake)
- Include a sunset provision to #1 and #2 above
- No action – maintain status quo

Effect of the 5-Fish Bag Limit in the Lower Laguna Madre

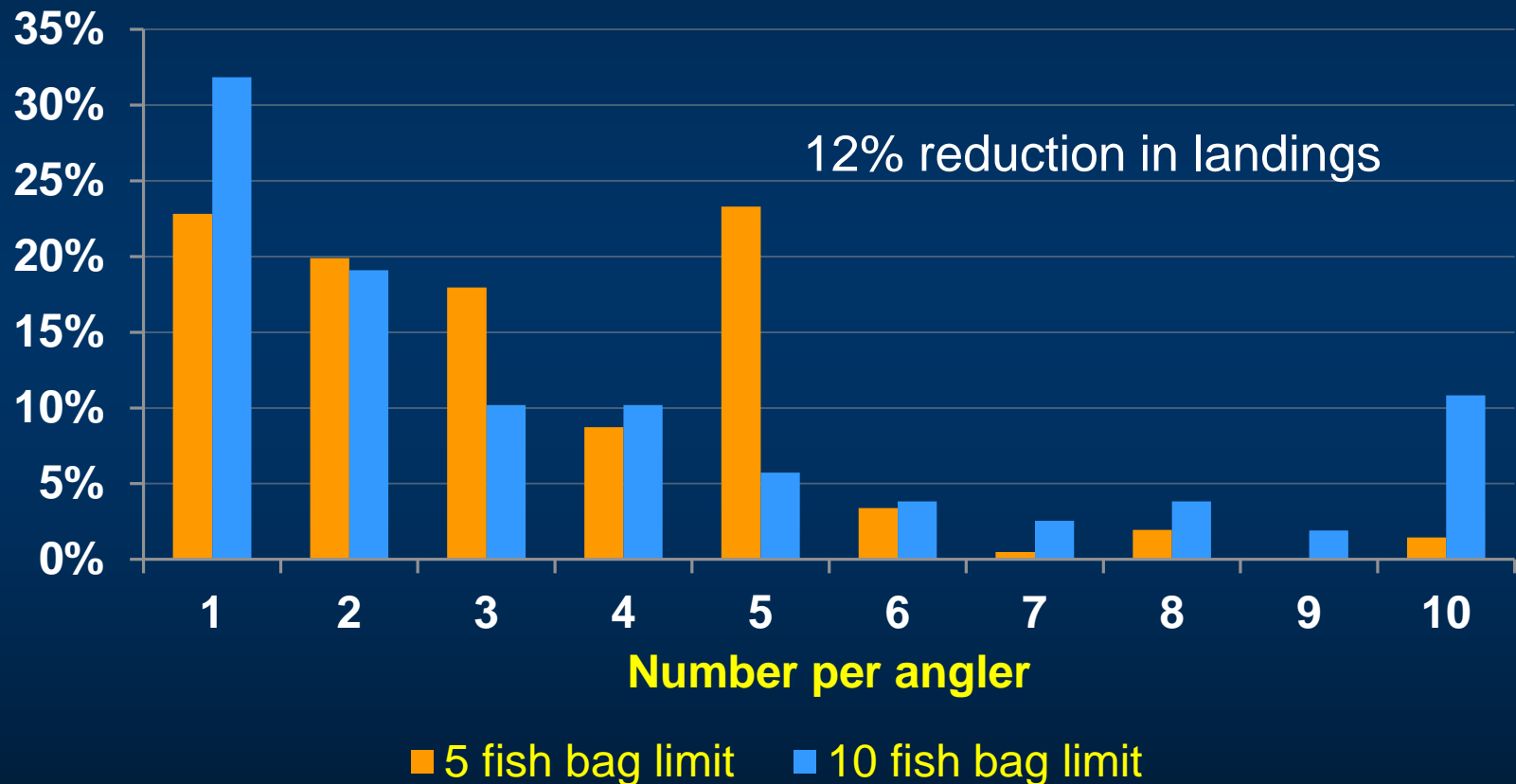
- Landings have been reduced
- More, larger trout in the population
- Reports of high grading, or culling of fish
- Non-compliance

Lower Laguna Madre Spotted Seatrout Bag Distribution



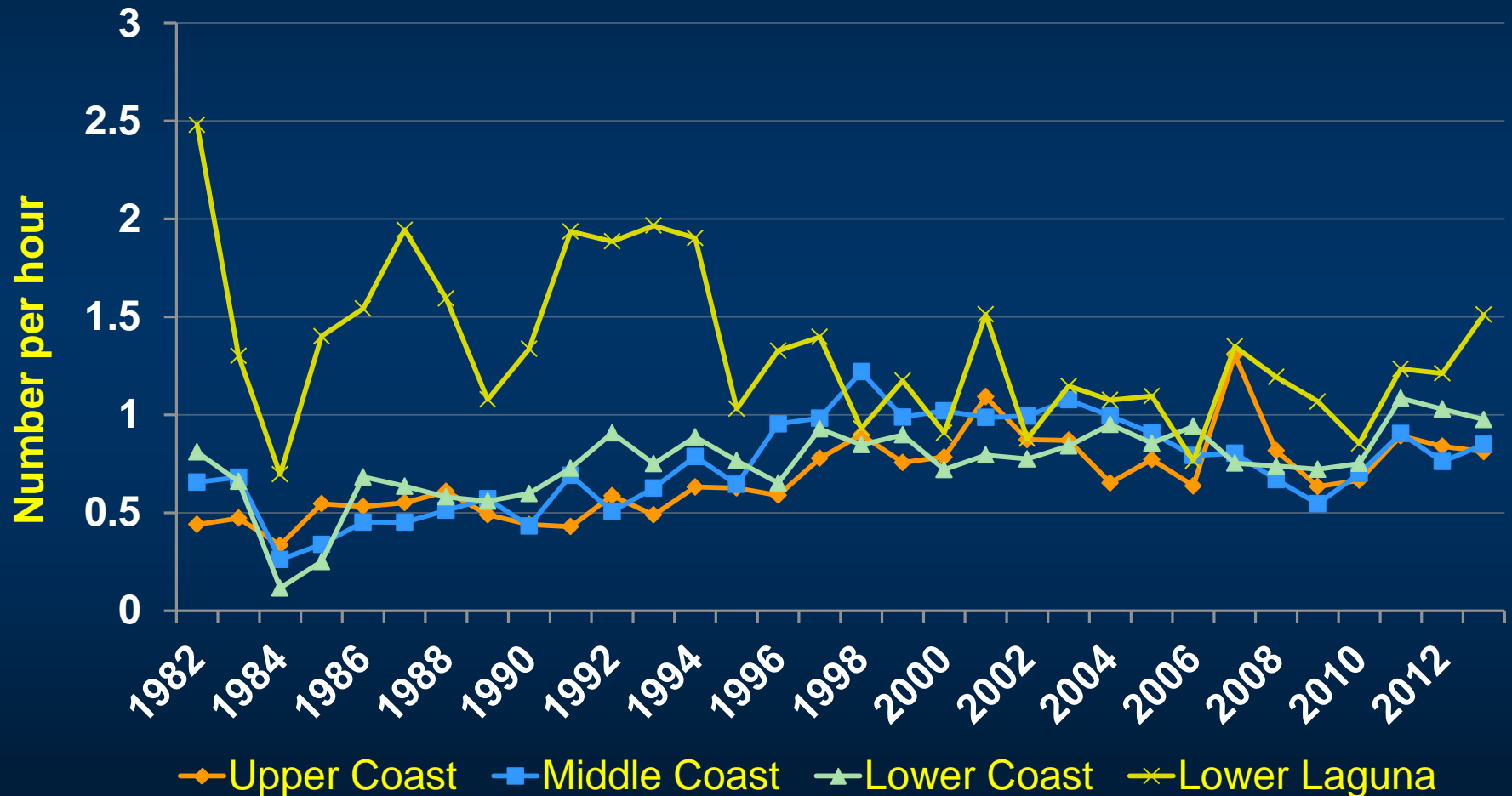
Private boats, 2004-2012; Regulation implemented Sept 1, 2007

Lower Laguna Madre Spotted Seatrout Bag Distribution

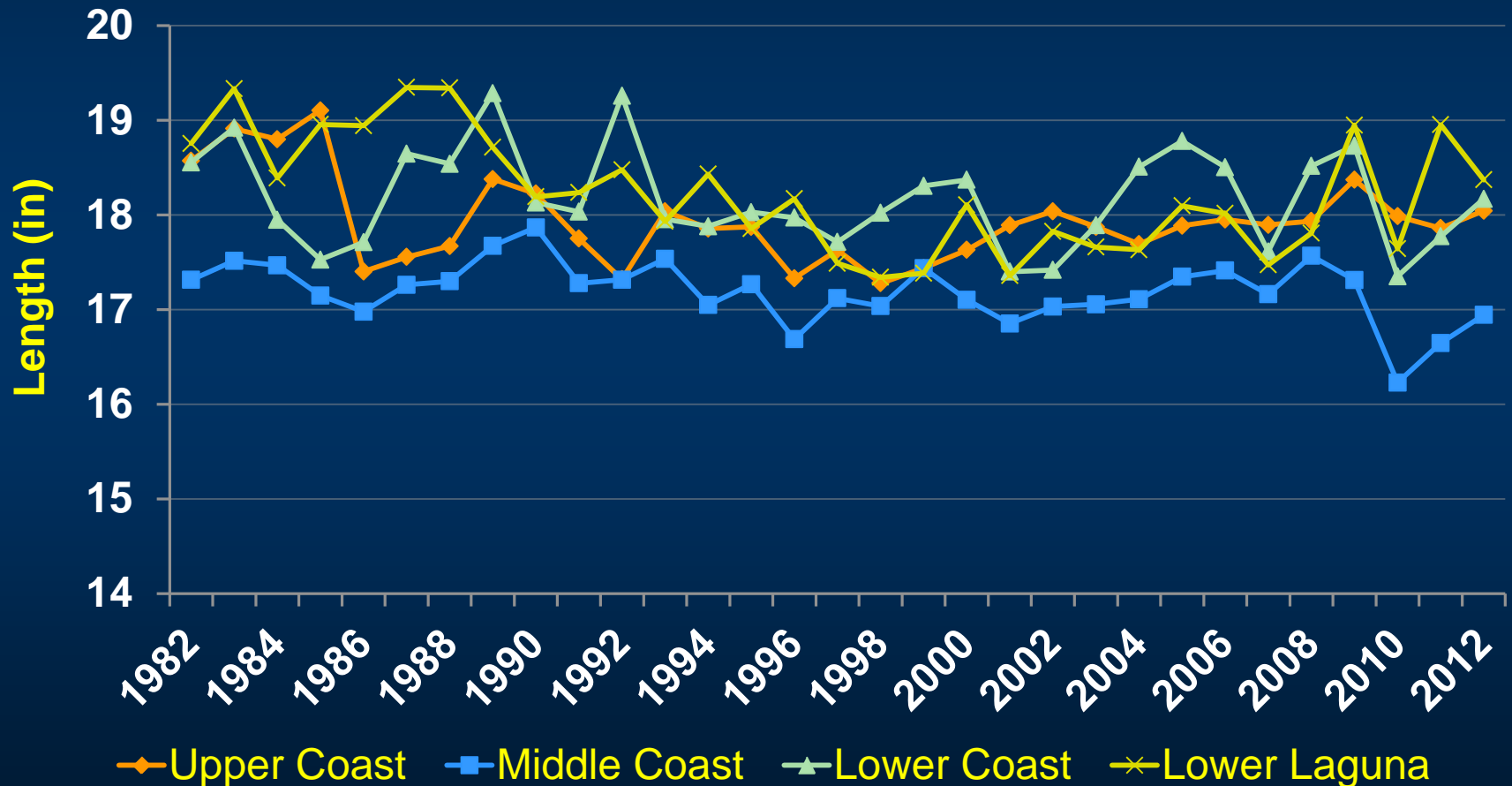


Party boats, 2004-2012; Regulation implemented Sept 1, 2007

Spring Gill Nets by Region Spotted Seatrout



Spotted Seatrout Mean Lengths from Gill Nets



Predicted Effects of Options

Option	Population	Spawning Biomass	Change of fish ≥ 25 "	Population of fish ≥ 25 "	Landings
Coastwide	+4.8%	+16.6%	+42.5%	0.7%	-13.8%
ULM to Matagorda	+4.5%	+16.4%	+41.8%	0.7%	-13.6%
Status quo	0%	0%	0%	0.5%	0%

Where to Provide Comment

- TPWD Website
 - <http://www.tpwd.texas.gov>
- SWFishComments
 - SWFishComments@tpwd.texas.gov
- Art Morris
 - art.morris@tpwd.texas.gov
- Jeremy Leitz
 - jeremy.leitz@tpwd.texas.gov



TEXAS

PARKS &

WILDLIFE