



San Antonio

TEXAS
PARKS &
WILDLIFE

The City Nature Challenge is a global, city-scale urban biodiversity BioBlitz. This year's event was a world-wide collaborative effort rather than a competition.



Harris's Hawk, Tom & Patsy Inglet, iNaturalist, CCBY-NC



Plateau milkvine, Zachary Tonzetich, iNaturalist, CCBY-NC

Data collection
Apr 29-May 3

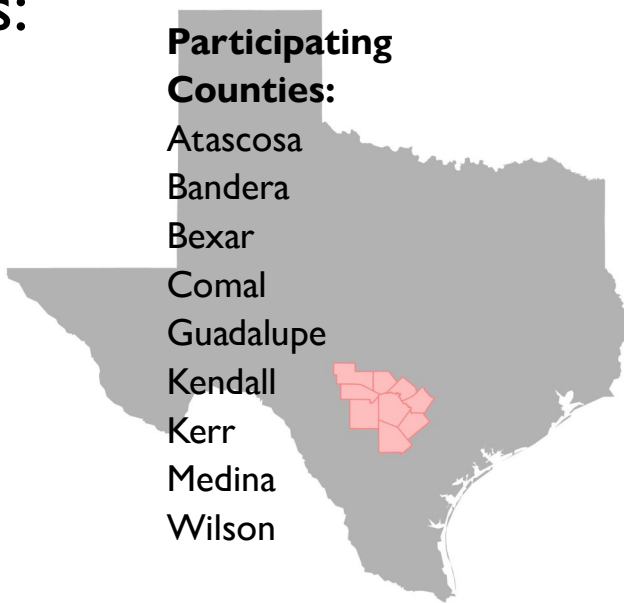
Identifications
May 4-9

San Antonio by the numbers:

- 9 counties
- More than 14,900 observations
- More than 2,200 species recorded
- More than 740 observers
- More than 660 identifiers
- Over 94% of observations were verifiable

Participating Counties:

Atascosa
Bandera
Bexar
Comal
Guadalupe
Kendall
Kerr
Medina
Wilson



San Antonio Highlights

Globally, 419 cities from 44 countries participated in the 2021 City Nature Challenge. San Antonio ranked **#18 for Observations**, **#13 for Species**, and **#17 for Observers** globally, placing it in the top 4% of projects.

The City Nature Challenge is organized by the Natural History Museum of Los Angeles County and the California Academy of Sciences. More information at citynaturechallenge.org

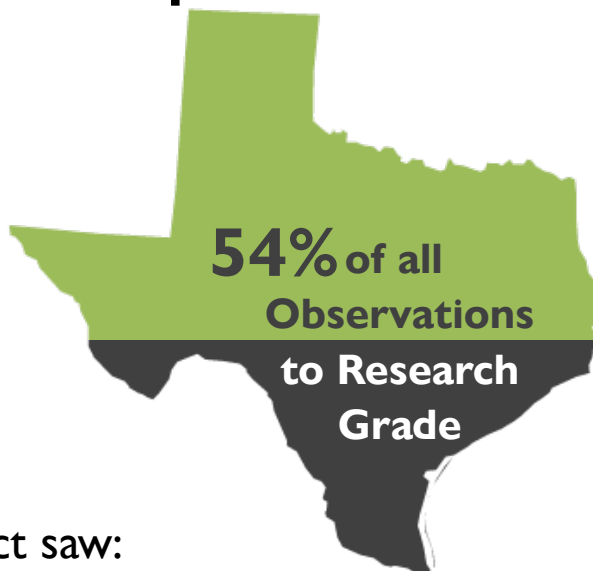


San Antonio

TEXAS
PARKS &
WILDLIFE

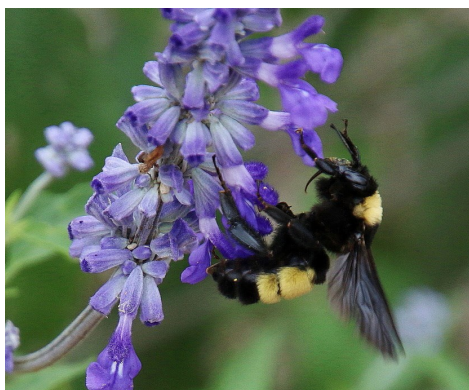
Cumulative Impact

54% of the observations recorded during the City Nature Challenge in the San Antonio area were **Research Grade** - observations of wild organisms with photo or sound vouchers of a quality to merit a species-level identification by the majority of identifiers.



During the 4 days of the event, the project saw:

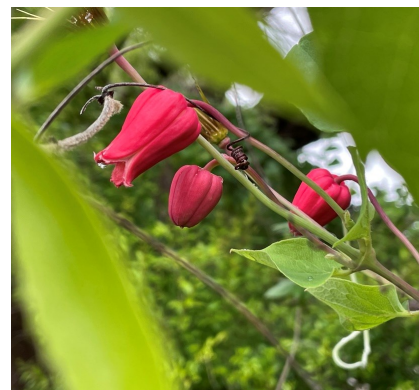
- 44 Species of Greatest Conservation Need at Research Grade (see list)
- 113 new species records in iNaturalist
- 4% increase in iNaturalist observations for the project counties
- Project page: <https://www.inaturalist.org/projects/city-nature-challenge-2021-san-antonio>



American bumble bee,
johndickinson68, iNaturalist, CCBY-NC



Guadalupe bass, Nick Loveland,
iNaturalist, public domain



Scarlet leatherflower,
thenectarbar, iNaturalist, CCBY-NC

The City Nature Challenge is organized by the Natural History Museum of Los Angeles County and the California Academy of Sciences. More information at citynaturechallenge.org



San Antonio

TEXAS
PARKS &
WILDLIFE

Species of Greatest Conservation Need

Recorded to Research Grade

American Bumble Bee, <i>Bombus pensylvanicus</i>	Plateau Milkvine, <i>Matelea edwardsensis</i>
Bell's Vireo, <i>Vireo bellii</i>	Red-shouldered Hawk, <i>Buteo lineatus</i>
Bewick's Wren, <i>Thryomanes bewickii</i>	Rufous-crowned Sparrow, <i>Aimophila ruficeps</i>
Canyon mock orange, <i>Philadelphus texensis</i>	Scarlet Leather Flower, <i>Clematis texensis</i>
<i>ernestii</i>	Scissor-tailed Flycatcher, <i>Tyrannus forficatus</i>
Chuck-will's-widow, <i>Antrostomus carolinensis</i>	Snowy Egret, <i>Egretta thula</i>
Comanche harvester ant, <i>Pogonomyrmex</i>	Sonoran Bumble Bee, <i>Bombus sonorus</i>
<i>comanche</i>	Strecker's Chorus Frog, <i>Pseudacris streckeri</i>
Common Yellowthroat, <i>Geothlypis trichas</i>	Summer Tanager, <i>Piranga rubra</i>
Dickcissel, <i>Spiza americana</i>	Swainson's Hawk, <i>Buteo swainsoni</i>
Field Sparrow, <i>Spizella pusilla</i>	Sycamore-leaf Snowbell, <i>Styrax platanifolius</i>
Franklin's Gull, <i>Leucophaeus pipixcan</i>	<i>platanifolius</i>
Golden-cheeked Warbler, <i>Setophaga</i>	Texas almond, <i>Prunus minutiflora</i>
<i>chrysoparia</i>	Texas Blind Snake, <i>Rena dulcis</i>
Grasshopper Sparrow, <i>Ammodramus</i>	Texas Fescue, <i>Festuca versuta</i>
<i>savannarum</i>	Texas Tortoise, <i>Gopherus berlandieri</i>
Green Heron, <i>Butorides virescens</i>	Tobusch Fishhook Cactus, <i>Sclerocactus</i>
Guadalupe Bass, <i>Micropterus treculii</i>	<i>brevihamatus tobuschii</i>
Harris's Hawk, <i>Parabuteo unicinctus</i>	Tricolored Heron, <i>Egretta tricolor</i>
Hill Country Wild-mercury, <i>Ditaxis aphoroides</i>	Wild Turkey, <i>Meleagris gallopavo</i>
Lark Sparrow, <i>Chondestes grammacus</i>	Wood Thrush, <i>Hylocichla mustelina</i>
Little Blue Heron, <i>Egretta caerulea</i>	Yellow-billed Cuckoo, <i>Coccyzus americanus</i>
Loggerhead Shrike, <i>Lanius ludovicianus</i>	Yellow-throated Warbler, <i>Setophaga dominica</i>
Mississippi Kite, <i>Ictinia mississippiensis</i>	
Northern Bobwhite, <i>Colinus virginianus</i>	
Orchard Oriole, <i>Icterus spurius</i>	
Painted Bunting, <i>Passerina ciris</i>	

The City Nature Challenge is organized by the Natural History Museum of Los Angeles County and the California Academy of Sciences. More information at citynaturechallenge.org