



PRONGHORN AGE SURVEY

Texas Parks and Wildlife Department is asking hunters to mail in teeth from their harvested pronghorn.

Why?

The lower two front teeth will be used to estimate the age of your pronghorn. Age information coupled with aerial survey data are used by biologists to issue pronghorn hunting permits.

What do I do?

Remove the two front teeth (incisors) from the harvested animal's lower jaw. **Detailed instructions are on the back of this sheet.** Incisor removal from the lower jaw will not affect your trophy if you plan to have it mounted.

How does this help hunters?

The department's strategy is to provide a high level of hunter opportunity, while still maintaining buck quality for hunters seeking older aged animals. When data are collected annually, biologists can adjust their harvest recommendations to keep age and sex ratios close to their natural balance. This helps to maintain sustainable harvest of quality bucks for the future.

Do I get the results?

Age results will be available (usually in January) on our pronghorn web page – www.tpwd.texas.gov/pronghorn – under the permit number used to tag your pronghorn.

Please assist us in better managing Texas' pronghorn resource.

Send teeth as soon as possible after your hunt.

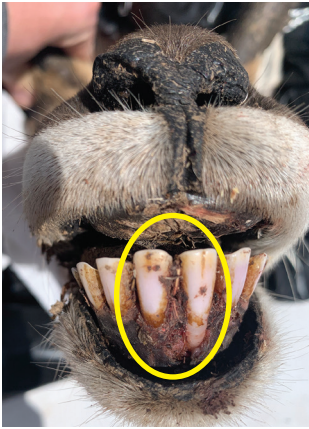
Teeth received after Oct. 31 will be sent to the lab the following year.

Thank you!

If you have any questions, contact Shawn Gray:
(432) 296-3724 or Shawn.Gray@tpwd.texas.gov

INSTRUCTIONS ARE ON THE BACK OF THIS SHEET

1



Locate the two center incisors in the bottom jaw of a harvested pronghorn.

2



Pull back bottom lip of pronghorn. Then, using a thin-bladed knife, carefully make vertical cuts with a gentle rocking motion between both incisors and along each incisor's edge until the knife will go no further downward.

3



Work each incisor free using your knife to pry tooth outward and separate it from adjacent teeth.

4



It is essential that the entire tooth (**including the root**) be removed. The root is the most important part for determining age.

5



Scrape any large chunks of flesh from the teeth and place both incisors in the padded envelope. Only send intact teeth with crown and root.



6

Please fill out all information on the envelope, including permit and herd unit numbers.

Without permit or herd unit number, ages cannot be matched to specific herds.

Put the padded envelope containing the teeth in the postage-paid envelope and drop in the mail.