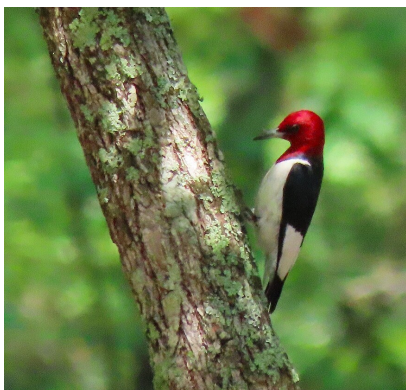
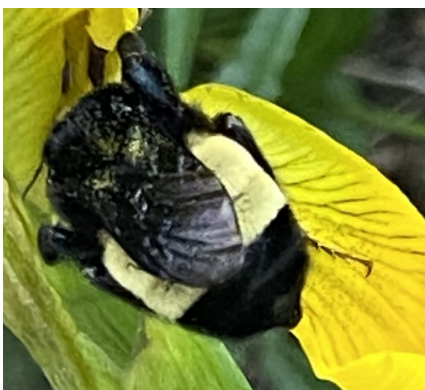


The City Nature Challenge is a global, city-scale urban biodiversity BioBlitz framed as a friendly competition between participating areas.



Red-headed Woodpecker,
@annreynolds, iNaturalist (CC-BY-NC)



American Bumble Bee, @annreynolds,
iNaturalist (CC-BY-NC)

**Data collection
Apr 25-28**

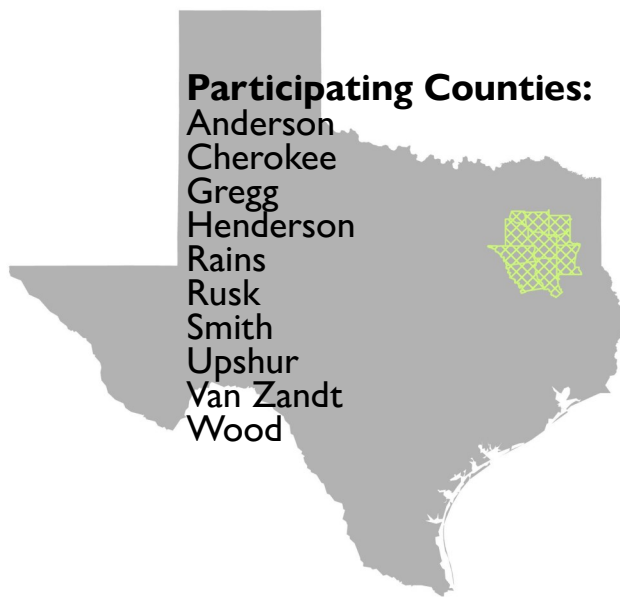
**Identifications
April 29-May 4**

By the numbers:

- 10 counties
- More than 3,210 observations
- 1,021 species recorded
- 187 observers
- More than 330 identifiers
- 96% of observations were verifiable

Participating Counties:

Anderson
Cherokee
Gregg
Henderson
Rains
Rusk
Smith
Upshur
Van Zandt
Wood



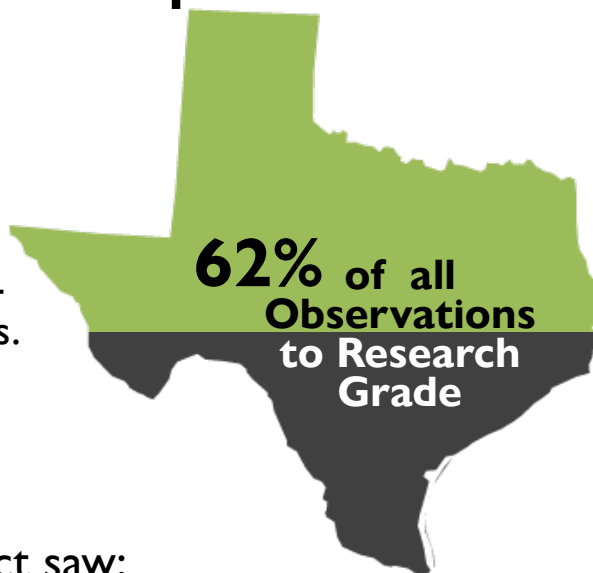
Tyler/East Texas Highlights

Globally, 669 cities from 62 countries participated in the 2025 City Nature Challenge. Tyler/East Texas ranked **#199 for Observations**, **#188 for Species**, and **#106 for Observers** globally, placing it in the top 24% of projects.

Tyler/East Texas

Cumulative Impact

62% of the observations recorded during the City Nature Challenge in the Tyler/East Texas area were **Research Grade** - observations of wild organisms with photo or sound vouchers of a quality to merit a species-level identification by the majority of identifiers.



During the 4 days of the event, the project saw:

- 5 Species of Greatest Conservation Need at Research Grade (see list)
- 63 new species records in iNaturalist
- 1% increase in iNaturalist observations for the project counties
- Project page: <https://www.inaturalist.org/projects/city-nature-challenge-2025-tyler-east-texas>



Prothonotary Warbler,
@phototime, iNaturalist (CC-BY-NC)



Common Grackle, @critrgirl,
iNaturalist (CC-BY-NC)



Luna Moth, @mrs_jones,
iNaturalist (CC-BY-NC)



Tyler/East Texas



Species of Greatest Conservation Need Recorded to Research Grade

American Bumble Bee, *Bombus pensylvanicus*
Chuck-Will's-Widow, *Antrostomus carolinensis*
Common Grackle, *Quiscalus quisqualis*
Prothonotary Warbler, *Protonotaria citrea*
Red-headed Woodpecker, *Melanerpes erythrocephalus*