



Riparian Trees Of The Trans-Pecos And Their Importance To The Ecosystem

Price Rumbelow, Conservation Delivery Specialist



RIO GRANDE
JOINT VENTURE

Question 4

A Riparian area includes

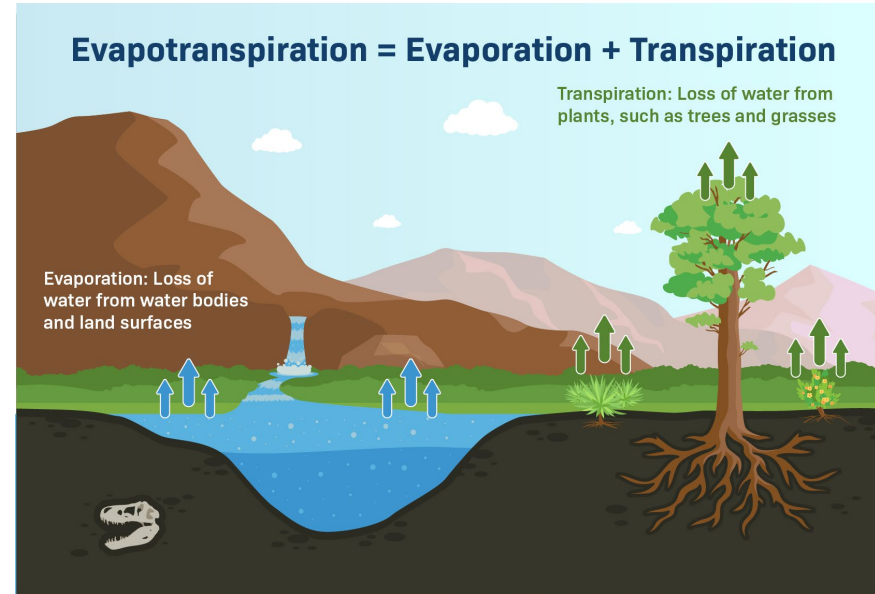
- A) ephemeral streams
- B) permanent water bodies
- C) floodplains and up near-slopes that drain into the water
- D) All of the above.



RIPARIAN - relating to wetlands adjacent to rivers and streams



What is the role of woody debris in a riparian ecosystem?



Question 5

Facultative species

- A) almost always occur in wetlands.
- B) almost always occur in non-wetlands.
- C) equally likely to occur in wetlands and non-wetlands.
- D) only occur in the faculty lounge.

Tree Species Associated With Riparian Areas In The Trans-Pecos

- ▶ OBL Obligate Wetland species almost always occur in wetlands (greater than 99% probability).
- ▶ FACW Facultative Wetland species usually occur in wetlands (67% - 99% probability), but are occasionally found in non-wetlands.
- ▶ FAC Facultative species are equally likely to occur in wetlands and non-wetlands (34% - 66% probability).
- ▶ FACU Facultative Upland species usually occur in non-wetlands (67% - 99% probability), but are occasionally found in wetlands.
- ▶ UPL Upland species almost always occur in non-wetlands (greater than 99% probability) and almost never occur in wetlands.

Woody plants

- ▶ *Cephalanthus occidentalis* - Buttonbush



Copyright © Robert O'Brien

- ▶ *Baccharis salicifolia* – Seepwillow baccharis



TEXAS A&M
AGRI LIFE
EXTENSION

Woody Plants continued.

- ▶ *Juglans microcarpa* - Little walnut, Nogalito



Copyright © Robert O'Brien

- ▶ *Ungnadia speciosa* - Mexican buckeye



Mexican Buckeye
Ungnadia speciosa

Copyright © Robert O'Brien

Riparian Trees - Mesquite Trees

- ▶ *Prosopis glandulosa* Torr. var. *glandulosa* honey mesquite
- ▶ *Prosopis glandulosa* Torr. var. *torreyana* western honey mesquite



Copyright © Robert O'Brien

- ▶ *Prosopis pubescens* – Screwbean or Tornillo mesquite



Copyright © Robert O'Brien

Riparian Trees Continued

▶ *Celtis laevigata* – Netleaf hackberry

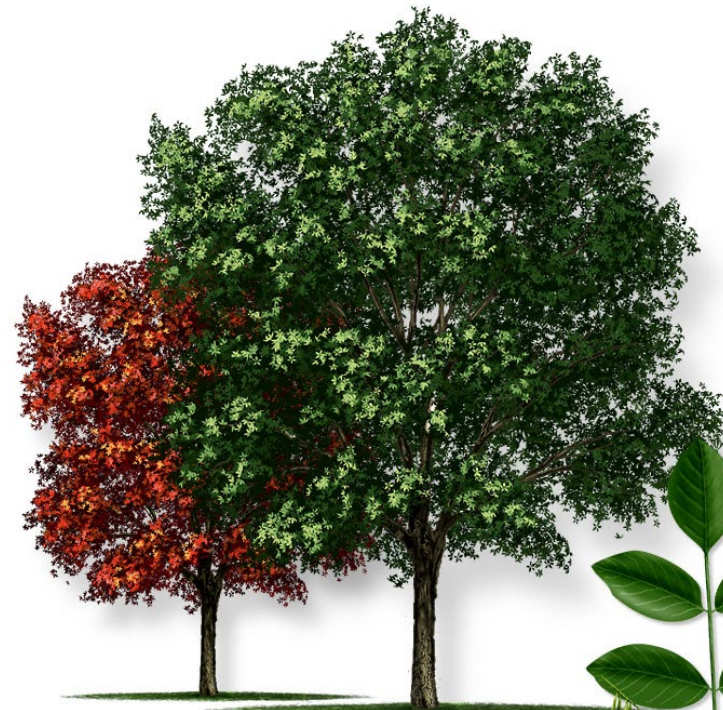


Sugarberry
Celtis laevigata



Copyright © Robert O'Brien

▶ *Fraxinus velutina* – Velvet ash



Copyright © Robert O'Brien

Riparian Trees - Cottonwood

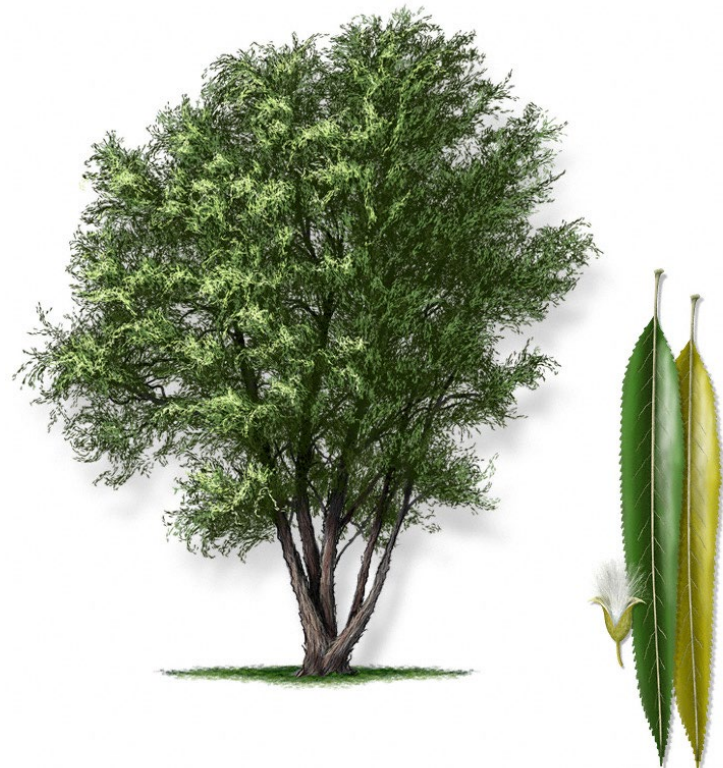
- ▶ *Populus deltoides wislizenii* –
Rio Grande cottonwood
- ▶ *Populus angustifolia* –
Narrowleaf cottonwood
- ▶ *Populus fremontii* –
Frémont's cottonwood



Copyright © Robert O'Brien

Riparian Trees - Willow

- ▶ *Salix gooddingii* –
Gooding's willow
- ▶ *Salix exigua* –
Coyote willow or Narrowleaf willow
- ▶ *Salix taxifolia* –
Yewleaf willow



Copyright © Robert O'Brien

References

- ▶ Your Remarkable Riparian – Steve Nelle - <https://www.remarkableriparian.org/index.php>
- ▶ Trees and Shrubs of the Trans Pecos and Adjacent Areas – Dr. Michael Powell
- ▶ US Forest Service, Fire Effects Information System - <https://www.feis-crs.org/feis/>
- ▶ Texas A&M Forest Service, Trees of Texas - <http://texastreeid.tamu.edu/index.aspx>