

TEXAS STREAM TEAM

Presented By:

Ally Schlandt, Watershed Services Program & Outreach Specialist
The Meadows Center for Water and the Environment – Texas State
University

Date: June 22, 2023



THE MEADOWS CENTER
FOR WATER AND THE ENVIRONMENT
TEXAS STATE UNIVERSITY

TEXAS STREAM TEAM

AGENDA



GENERAL INFORMATION



ADVANTAGES & DATA USES



GET INVOLVED

An aerial photograph of a river valley, likely the Colorado River, with rugged mountains in the background. The image is overlaid with a semi-transparent blue gradient. The text "GENERAL INFORMATION" is centered in white, bold, sans-serif font.

GENERAL INFORMATION

STATEWIDE COMMUNITY SCIENCE WATER QUALITY MONITORING SINCE 1991

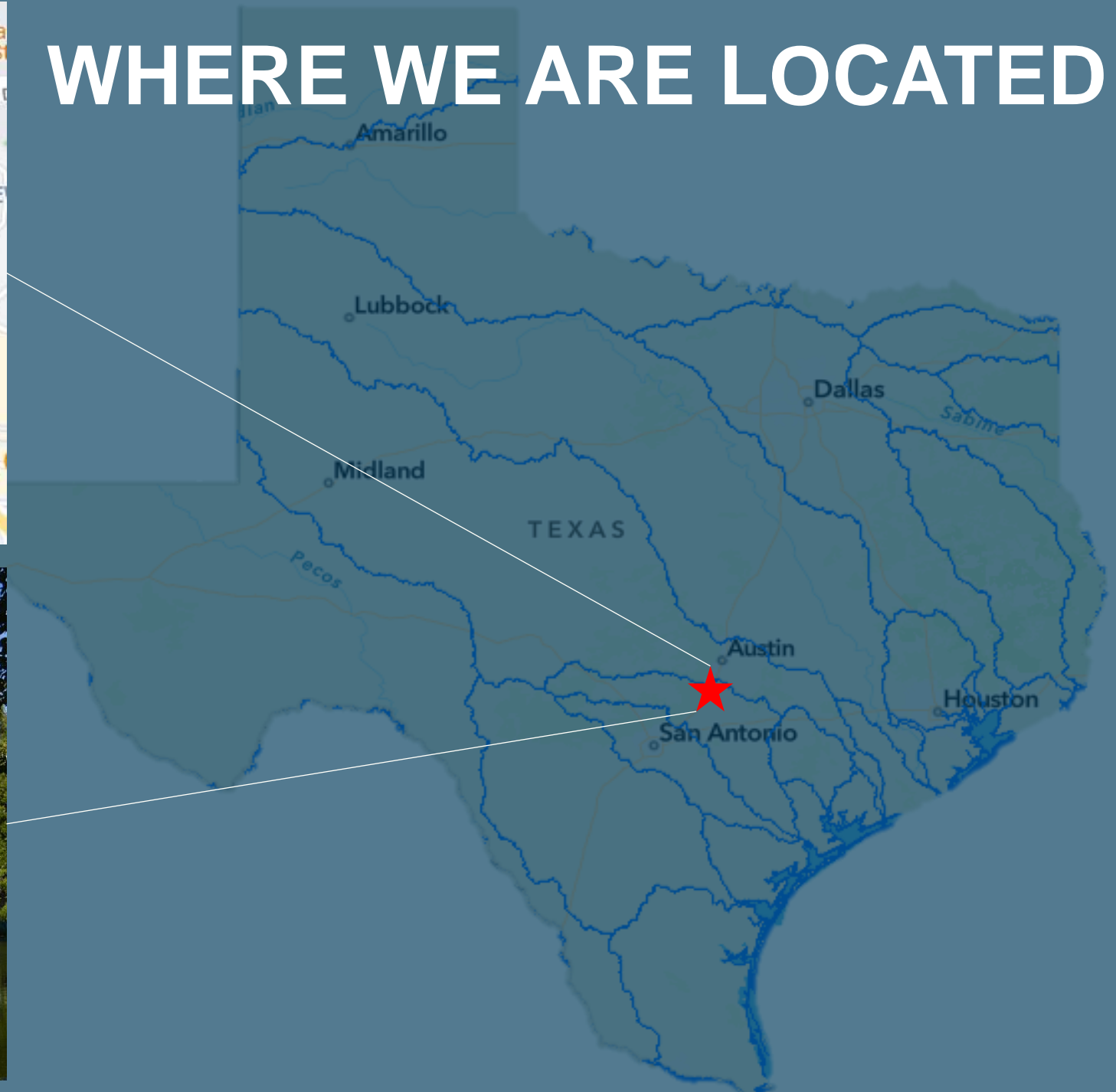
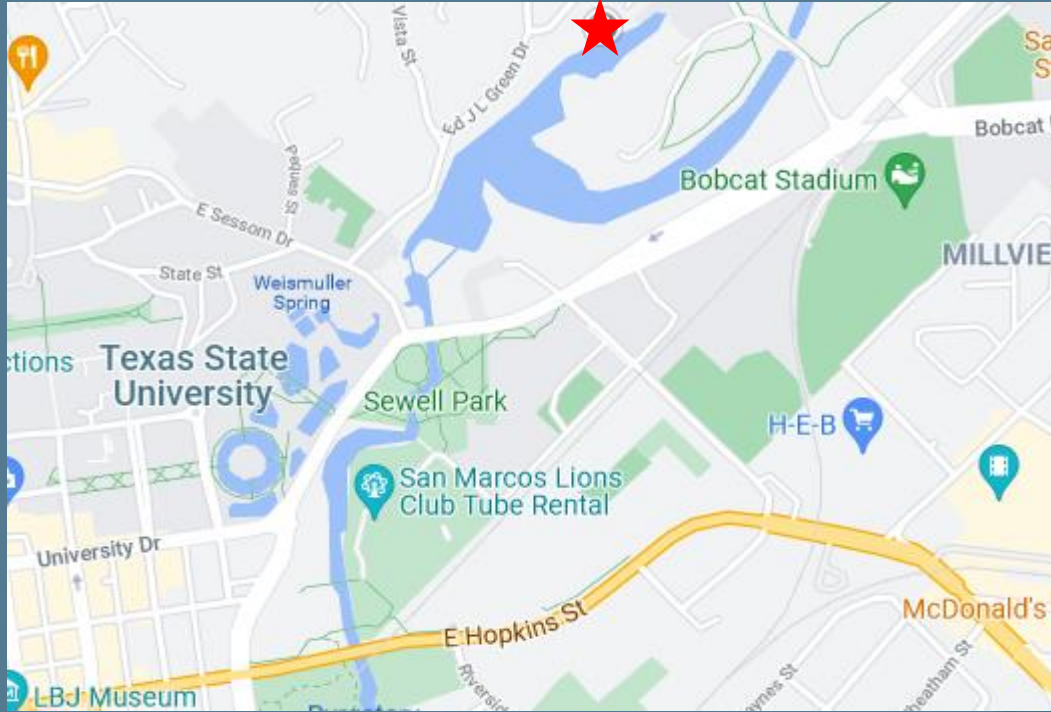
A network of trained community scientists and supportive partners administered through a cooperative partnership between:



**THE MEADOWS CENTER
FOR WATER AND THE ENVIRONMENT**
TEXAS STATE UNIVERSITY

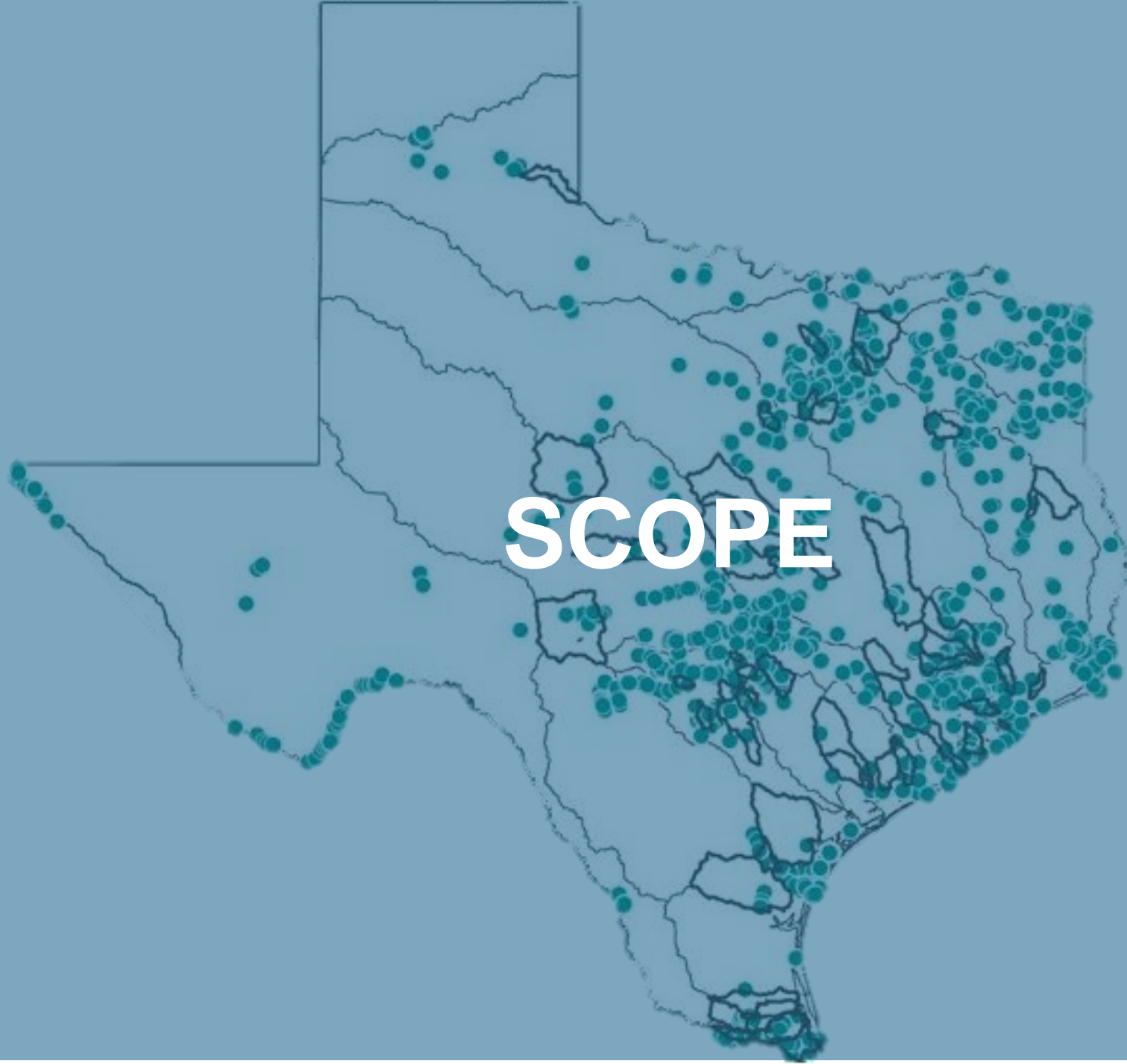


WHERE WE ARE LOCATED



An aerial photograph of a wide river valley, likely the Colorado River, with rugged mountains in the background. The entire image is covered with a semi-transparent blue filter. The text 'POLL 1' is centered in the middle of the image.

POLL 1



SCOPE



MISSION:

To facilitate environmental stewardship by empowering a statewide network of concerned community scientists, partners, and institutions in a collaborative effort to promote a healthy and safe environment through environmental education, data collection, and community action.

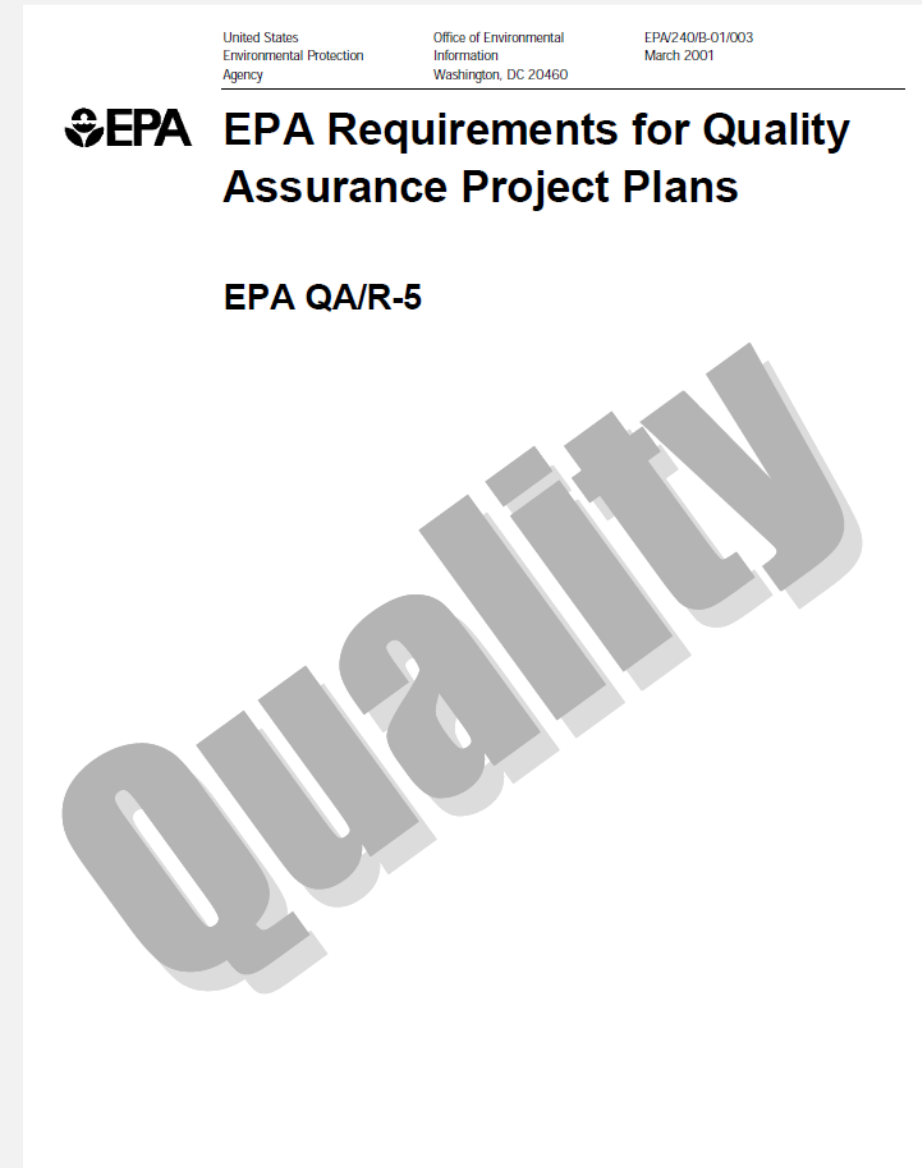
11,900+
Community Scientists

2,200+
Monitoring Sites

150+
Partners

TCEQ-APPROVED QUALITY ASSURANCE PROJECT PLAN

- Elements:
 - Project Management
 - Data Generation and Acquisition
 - Assessment and Oversight
 - Data validations, audits, QC measures
 - Data Validation and Usability





STANDARD CORE TRAINING

Parameters include
conductivity, dissolved
oxygen, pH, water
clarity, and field
observations using a
chemical kit





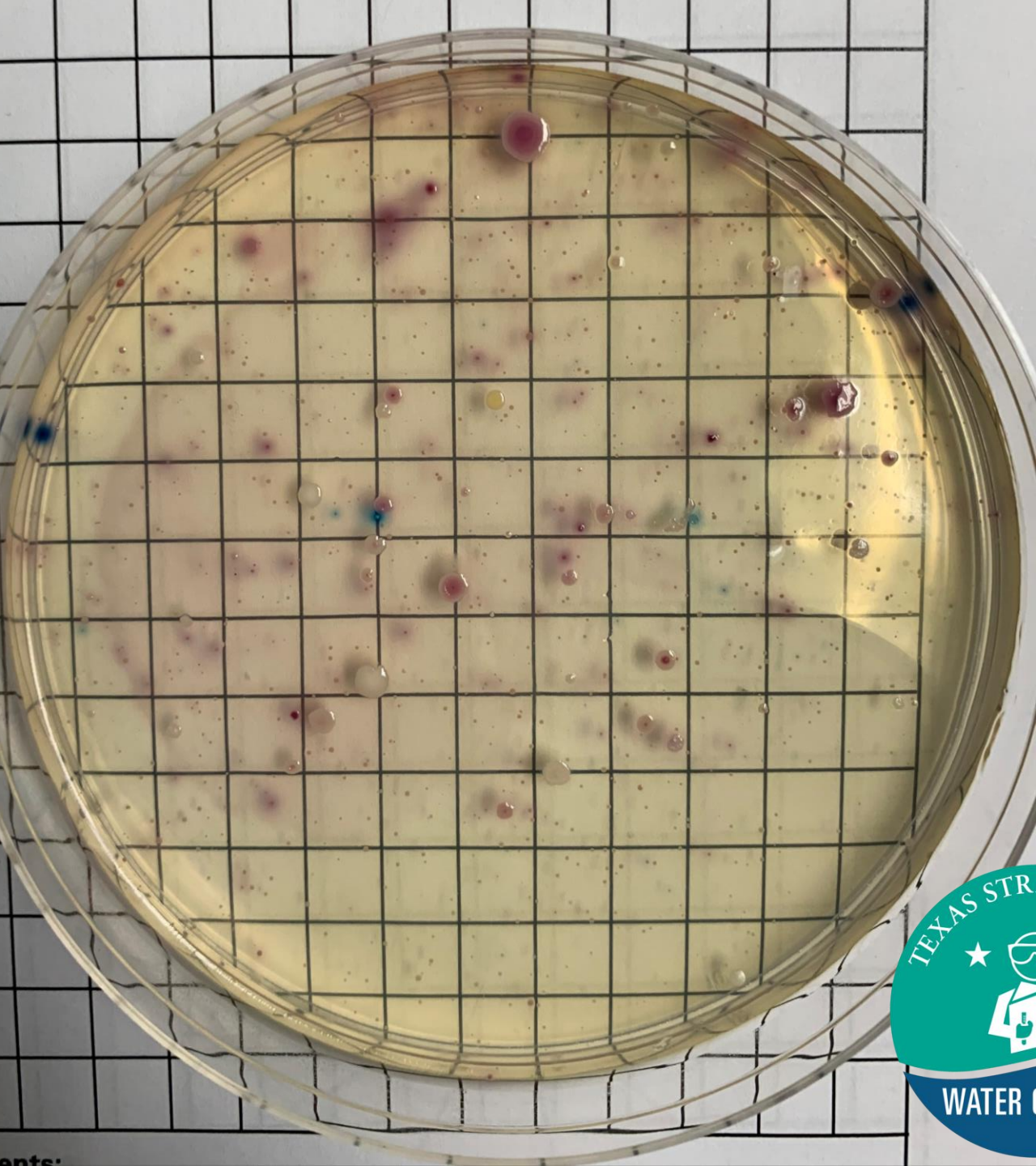
PROBE CORE TRAINING

Same core
parameters
however,
collected using a
digital probe kit



E. COLI BACTERIA TRAINING

Involves performing
tests for *E. coli*
bacteria to detect
presence of fecal
contamination



ADVANCED TRAINING

Involves performing
tests for nitrate-
nitrogen, phosphate,
turbidity, and
streamflow using an
Advanced kit



MACROINVERTEBRATE BIOASSESSMENT TRAINING

Assess the health
of your lake, river,
stream or estuary
based on the
aquatic insects'
present





RIPARIAN EVALUATION TRAINING

Assess the health of
waterways based on
evaluating the interface
between land and a
water body – known as
riparian areas





PROGRAM STRUCTURE



An aerial photograph of a wide river valley, likely the Colorado River, with rugged mountains in the background. The entire image is covered with a semi-transparent blue filter. The text 'POLL 2' is centered in the middle of the image in a white, bold, sans-serif font.

POLL 2







DATA USES

- ★ Offers a look at the overall quality of watersheds and local water quality
- ★ Assist state agencies in determining causes of pollution
- ★ Supports WPP and TMDLs
 - Data trends can have real world effects
 - Education and outreach
- ★ Data Summary Reports
- Research projects
- Submitted to EPA's Water Quality Exchange (WQX) portal
- Submitted into the Waterways Dataviewer database
- ★ Publicly accessible on our interactive Datamap
 - In-kind funds

DATA SUMMARY REPORTS

LITTLE BAY AND TULE CREEK DATA REPORT: ROCKPORT, TEXAS

June 2023



THE MEADOWS CENTER
FOR WATER AND THE ENVIRONMENT
TEXAS STATE UNIVERSITY

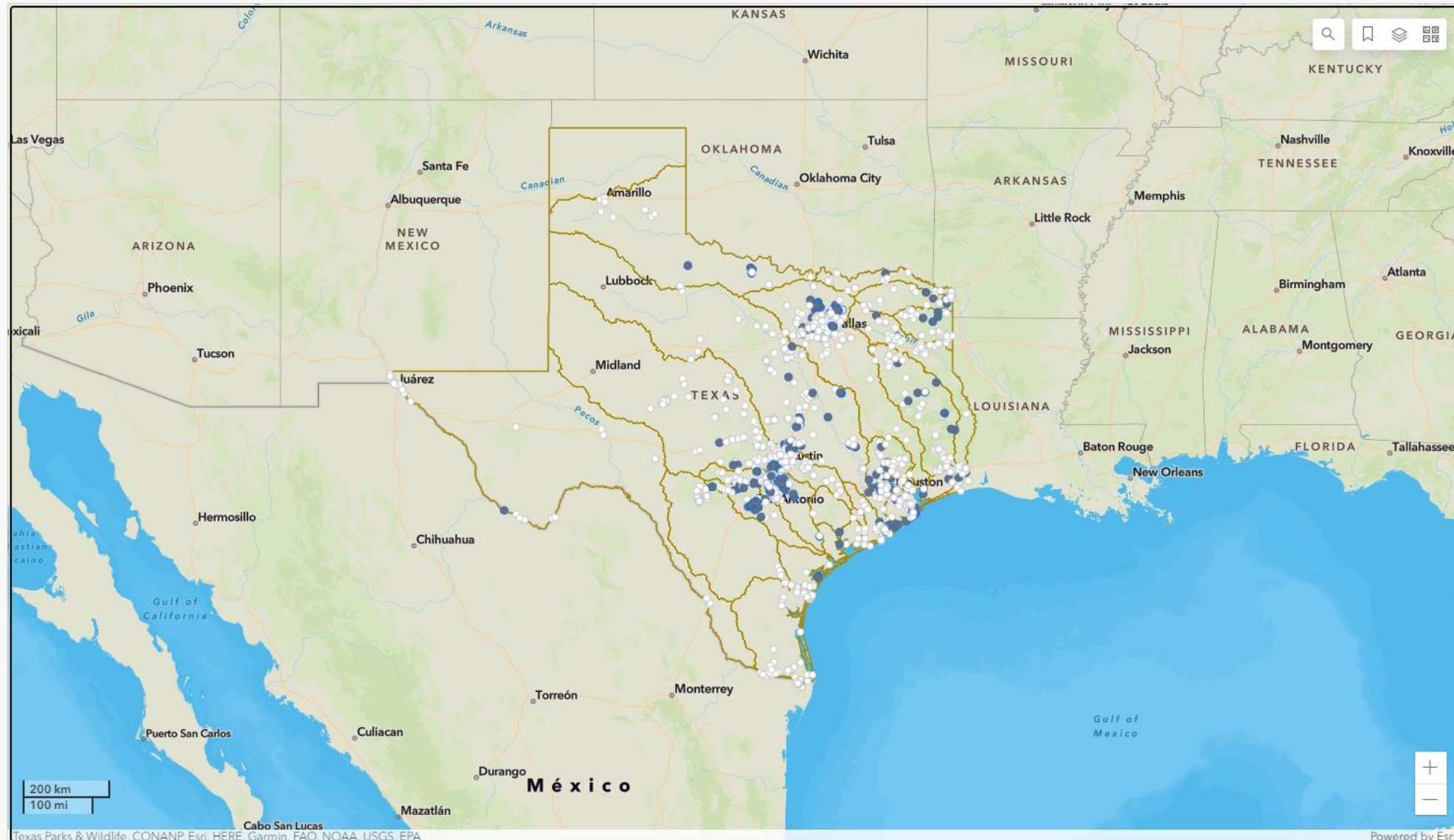
TEXAS STREAM TEAM

Photo credit: [Houstonia Magazine, 2023](#)



This report was prepared in cooperation with, and financed through, grants from the U.S. Environmental Protection Agency through the Texas Commission on Environmental Quality.

PUBLIC DATAMAP



Sampling Sites

- Active
- Inactive

Core

-

Riparian

-

How to use this datamap:

- Hover your mouse in the upper right corner of a panel and click on the expand icon to make the panel full screen. Click on this icon again to return to the dashboard view.
- In the map panel, use the menu bar to search, select bookmarked map views, view the map legend, and choose the visible map layers.
- Toggle the visible layers to filter the sites by currently active testing type. Multiple tests may be conducted at each site.
- Click on a site to view detailed information.

New Monitoring Site Request

[Click above to submit a new site request](#)

- The water quality data can be downloaded as a CSV here: [Water Quality Data](#) (updated May 8, 2023)
- Once data is available for a site, it will be included on the Datamap, which is updated with the previous month's data at the beginning of every month.
- Sites not sampled in the last 12 months (24 months for Riparian Evaluation and Macroinvertebrate Bioassessment data) are considered inactive and available for monitoring. Entering data for an inactive site or a newly created site will update its status to active.
- Some sites are monitored and submitted by partners:

CRWN - Colorado River Watch Network
H-GAC - Houston-Galveston Area Council

An aerial photograph of a river valley, showing a winding river through a lush green landscape. In the background, a range of mountains is visible under a clear sky. The entire image is overlaid with a semi-transparent blue filter.

GET INVOLVED

COMMON PARTNERS



CITIES



RIVER
AUTHORITIES



UNIVERSITIES



MASTER
NATURALISTS



REGIONAL
COUNCILS OF
GOVERNMENTS

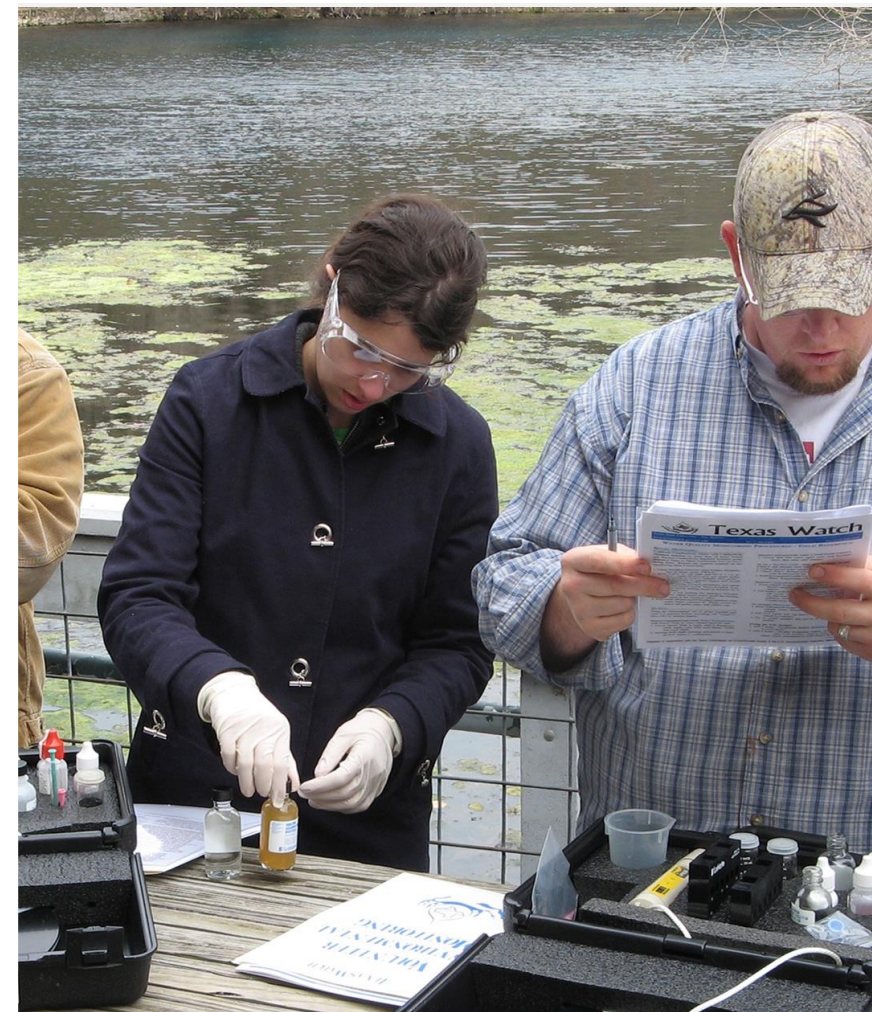
INVOLVEMENT OPPORTUNITIES



TRAINER



PARTNER



**COMMUNITY
SCIENTIST**

CONTACT INFORMATION

Aspen Navarro

Texas Stream Team

TxStreamTeam@TxState.edu

(512) 245-1346

www.TexasStreamTeam.org

ARTIST CREDITS

Rachel Cywinski

Jenya Mendelenko

Cooper Peterson

Andrew Shirey



THE MEADOWS CENTER
FOR WATER AND THE ENVIRONMENT

TEXAS STREAM TEAM