

Black Gap WMA
Unit #701
103,127 acres

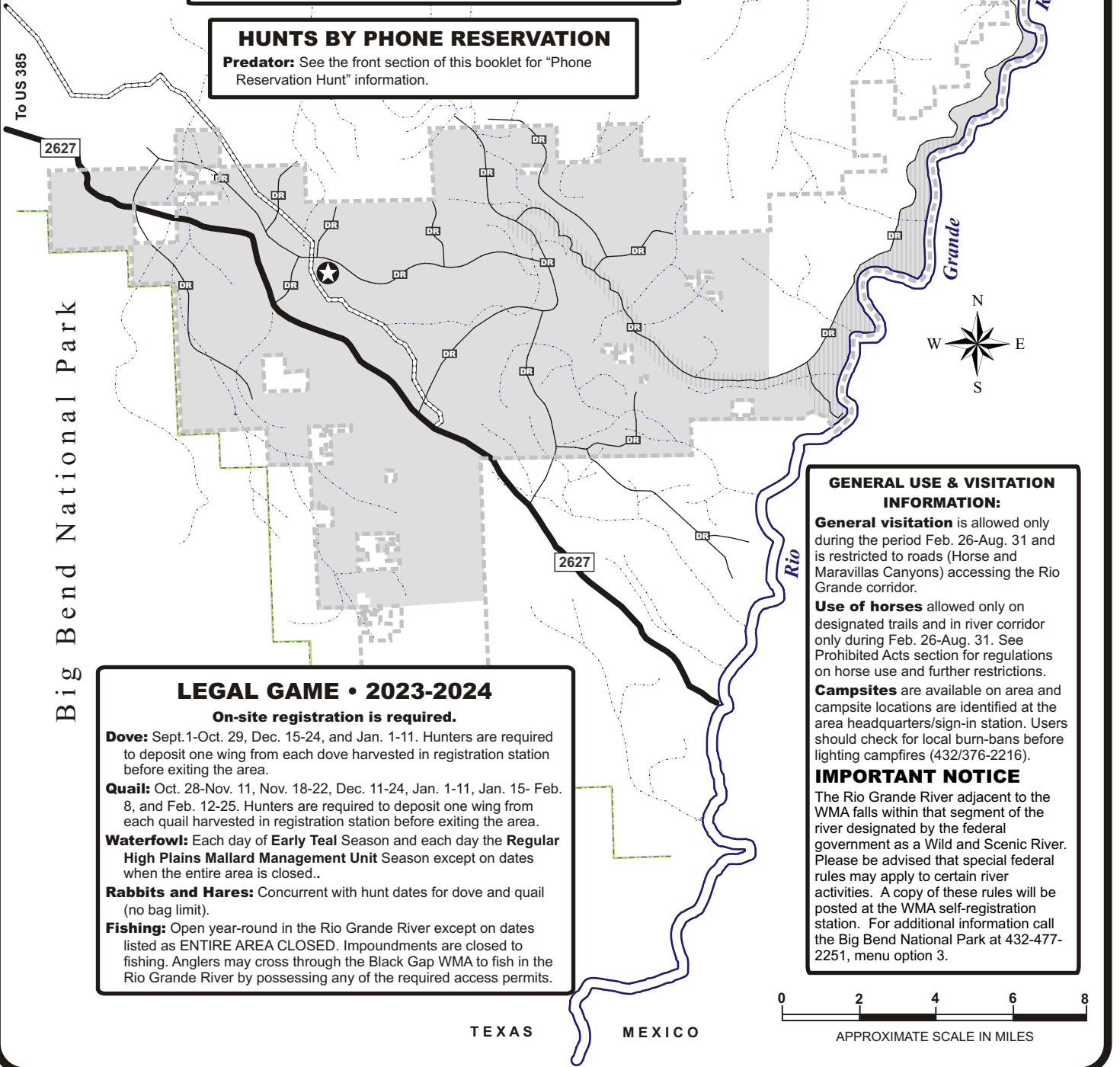


- Area Headquarters / Sign-in Station
- Public Hunting Area
- Equestrian Area
- National Park Boundary
- Designated Public Hunting Road
- Stream/bed

ENTIRE AREA CLOSED: Nov. 12-17, Nov. 23-Dec. 10, Dec. 24-31, Jan 12-14, and Feb. 9-11.

SPECIAL SEASON
Youth/Adult & Veteran/Active-Duty Military Duck: Oct. 21-22.

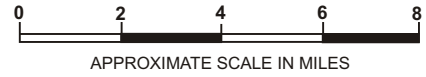
HUNTS BY PHONE RESERVATION
Predator: See the front section of this booklet for "Phone Reservation Hunt" information.



Big Bend National Park

LEGAL GAME • 2023-2024
On-site registration is required.
Dove: Sept. 1-Oct. 29, Dec. 15-24, and Jan. 1-11. Hunters are required to deposit one wing from each dove harvested in registration station before exiting the area.
Quail: Oct. 28-Nov. 11, Nov. 18-22, Dec. 11-24, Jan. 1-11, Jan. 15- Feb. 8, and Feb. 12-25. Hunters are required to deposit one wing from each quail harvested in registration station before exiting the area.
Waterfowl: Each day of **Early Teal Season** and each day the **Regular High Plains Mallard Management Unit Season** except on dates when the entire area is closed..
Rabbits and Hares: Concurrent with hunt dates for dove and quail (no bag limit).
Fishing: Open year-round in the Rio Grande River except on dates listed as ENTIRE AREA CLOSED. Impoundments are closed to fishing. Anglers may cross through the Black Gap WMA to fish in the Rio Grande River by possessing any of the required access permits.

GENERAL USE & VISITATION INFORMATION:
General visitation is allowed only during the period Feb. 26-Aug. 31 and is restricted to roads (Horse and Maravillas Canyons) accessing the Rio Grande corridor.
Use of horses allowed only on designated trails and in river corridor only during Feb. 26-Aug. 31. See Prohibited Acts section for regulations on horse use and further restrictions.
Campsites are available on area and campsite locations are identified at the area headquarters/sign-in station. Users should check for local burn-bans before lighting campfires (432/376-2216).
IMPORTANT NOTICE
 The Rio Grande River adjacent to the WMA falls within that segment of the river designated by the federal government as a Wild and Scenic River. Please be advised that special federal rules may apply to certain river activities. A copy of these rules will be posted at the WMA self-registration station. For additional information call the Big Bend National Park at 432-477-2251, menu option 3.



TEXAS MEXICO