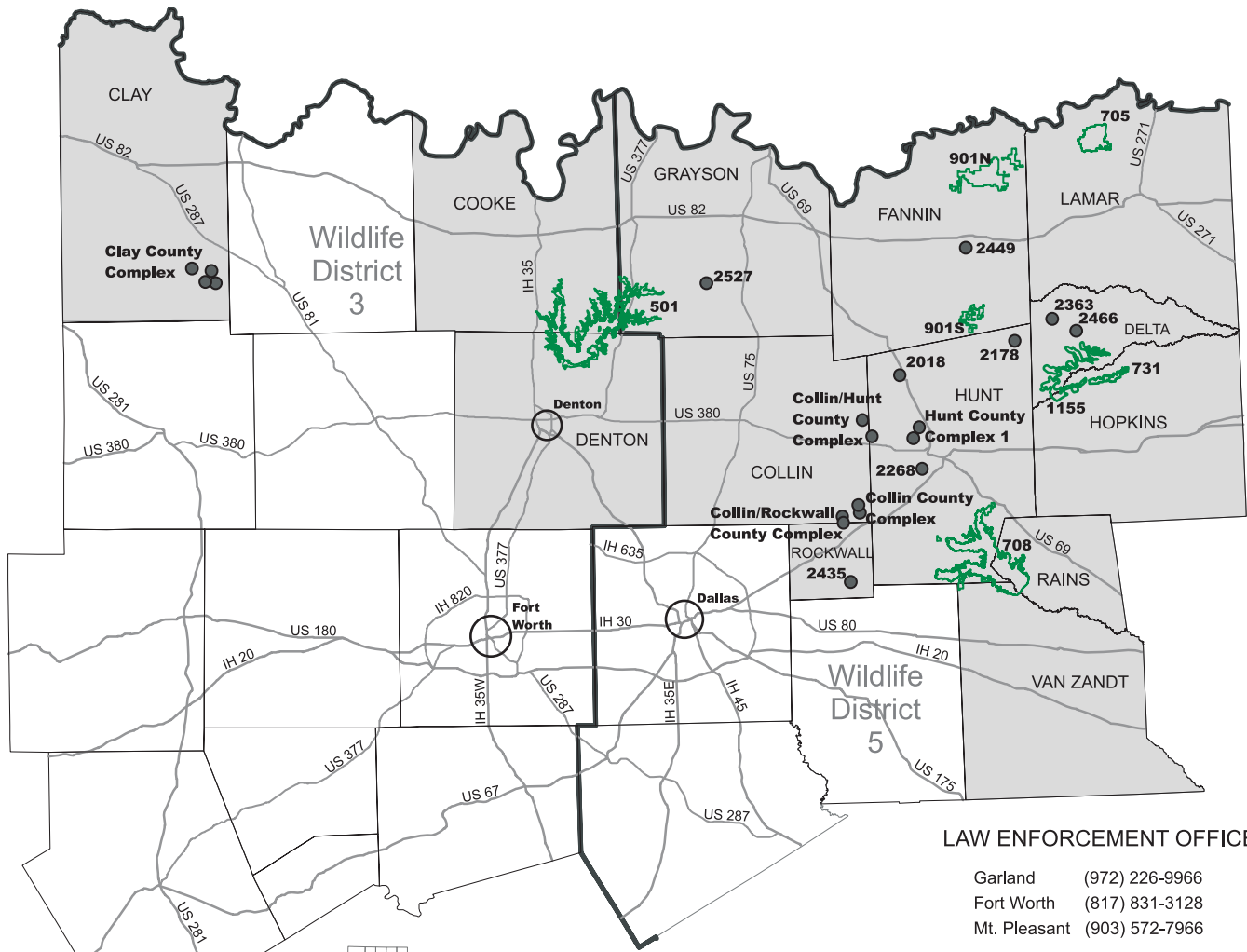


REGION 4 – DALLAS/FT. WORTH

2018-2019

For enhanced individual area maps, please visit www.tpwd.texas.gov/APH



LAW ENFORCEMENT OFFICES:

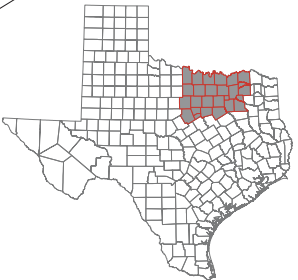
- Garland (972) 226-9966
- Fort Worth (817) 831-3128
- Mt. Pleasant (903) 572-7966

WILDLIFE DISTRICT OFFICES:

- District 5 - Tyler (903) 566-1626
- District 3 - May (254) 842-5917

To report game violations, call **1-800-792-GAME**

Please report black bear sightings or mortalities to the appropriate Wildlife District Office.



Counties offering hunts by Annual Permit
Total of 125,005 Acres

REGION 4 - DALLAS/FT. WORTH

PHR 4 HUNTING OPPORTUNITY OFFERED BY SPECIES																								
Page	County	Unit #	Unit Name	Deer - Archery	Deer - General	Feral Hog	Turkey	Dove	Teal	Waterfowl	Conservation Season	Other Migratory Birds	Quail	Squirrel	Rabbit	Coyotes	Furbearers	Fishing	Y/A Squirrel	Youth Deer	Youth Feral Hog	Youth Waterfowl	Youth Squirrel	
37	Clay		Clay County Complex																					
		2519	Thompson					1							1									
		2520	Rater/Crump					1							1									
		2521	Home Place					1							1									
		2522	Three B's					1							1									
38	Collin		Collin County Complex																					
		2266	West FM 1777					1																
		2267	North Roysse City					1																
39	Collin/Hunt		Collin/Hunt County Complex																					
		2346	FM 2194					1																
		2385	King Farm					1																
40	Collin/Rockwall		Collin/Rockwall County Complex																					
		2316	Farm Road 2755					1																
		2298	Farm Road 1138					1																
42-43	Cooke/Denton/Grayson	501	Ray Roberts PHL			1	1	1	1	1	1	1	1	1	1	1	1	1	1	1	1	1	1	1
44	Delta	2363	Rattan Community					1																
44	Delta	2466	FM 1530					1																
45	Delta/Hopkins	731	Cooper WMA	1		1	1	1	1	1	1	1	1	1	1	1	1	1	1	1	1	1	1	1
46	Grayson		Grayson County Complex																					
		2527	FM 902 Farm					1																
47	Hopkins	1155	S. Sulphur Unit - Cooper Lake SP	1		1																		
48	Fannin	901N	Bois D'Arc Unit - Caddo National Grasslands WMA	1	1	1	1	1	1	1	1	1	1	1	1	1	1	1	1	1	1	1	1	1
49	Fannin	901S	Ladonia Unit - Caddo National Grasslands WMA	1	1	1	1	1	1	1	1	1	1	1	1	1	1	1	1	1	1	1	1	1
50	Fannin	2449	Crossroad Farm					1																
50	Hunt	2018	West Celeste					1																
51	Hunt	2178	South Muddig					1																
52	Hunt		Hunt County Complex 1																					
		2019	Northwest Greenville					1																
		2336	County Road 1057					1																
53	Hunt	2268	East FM 1570					1																
54	Hunt/Rains/Van Zandt	708	Tawakoni WMA	1	1	1	1	1	1	1	1	1	1	1	1	1	1	1	1	1	1	1	1	1
55	Lamar	705	Pat Mayse WMA	1	1	1	1	1	1	1	1	1	1	1	1	1	1	1	1	1	1	1	1	1
56	Rockwall	2435	Lewis Farm					1																
				Totals	6	2	7	22	6	6	2	6	2	6	2	4	6	1	2	3	5	4	4	