

MULESHOE NATIONAL WILDLIFE REFUGE

PUBLIC HUNT INFORMATION

Muleshoe National Wildlife Refuge allows hunting of deer and feral hogs through an annual big game hunt. This hunt will offer a quality outdoor hunting experience to hunters as well as maintain healthy mule deer and white-tailed deer populations, while reducing feral hog numbers. Two archery hunts will be conducted this year. We will offer two quail hunt during the 2025-2026 season.

2025-26 Archery Deer Hunts:

- December 9-12th, 2025 (four hunters)
- January 6th–9th, 2026 (four hunters)

Archery Deer Hunt

Hunters may use any legal archery equipment as defined by TPWD. Hunters may harvest one white-tailed deer or mule deer, either sex. No antler restrictions apply. The possession of all bait (commercial food pellets, mineral blocks, etc.) is prohibited. The refuge prohibits the use of tree stands or any devices such as driving nails, spikes, or other metal objects into trees or hunting from trees in which any objects have been driven into a tree is prohibited. Pop-up blinds are allowed. The hunter's permit number must be located on the outside of the blind. Dogs may not be used for scouting or big game hunting. The use of all-terrain vehicles (ATV/UTV) is prohibited. Hunters should not shoot at a target that is not completely identified. Access to designated hunt units will be on roads only. Please do not block gates or roads. Hunters are required to check in and out of the refuge daily. All deer harvested must be checked at the designated check point.

2025-26 Quail Hunt

- **October 28-30th, 2025 (four hunters)**
- **November 4-6th, 2025 (four hunters)**

Quail Hunt Bag limits will follow TPWD regulations. Hunts will occur from 8:30 am to 4:30 pm. Use of dogs is allowed for upland game hunting. Only Federally approved non-toxic shot will be allowed during upland game hunts. The possession of all bait (commercial food pellets, mineral blocks, etc.) is prohibited. The use of all-terrain vehicles (ATV/UTV) is prohibited. Hunters should not shoot at a target that is not completely identified. Access to designated hunt units will be on roads only.

Persons possessing, transporting, or carrying firearms on national wildlife refuges must comply with all provisions of state and local law. Persons may only use (discharge) firearms in accordance with refuge regulations (50 CFR 27.42 and specific refuge regulations in 50 CFR). Hunters will be allowed to hunt in any area open to hunting. Hunters may only use USFWS approved non-toxic shot while hunting on the refuge. Hunters may use dogs while hunting quail on the refuge. All hunters must visibly wear an orange hat and 144 square inches of hunter orange. The use of all-terrain vehicles (ATV/UTV) is prohibited. Quail harvested must be checked in at the designated check point daily to determine age of bird and band numbers if present.

Hunters with Disabilities Call the refuge for information regarding options for hunters with a disability. A valid proof of disability as defined by Texas Parks and Wildlife hunting regulations is required.

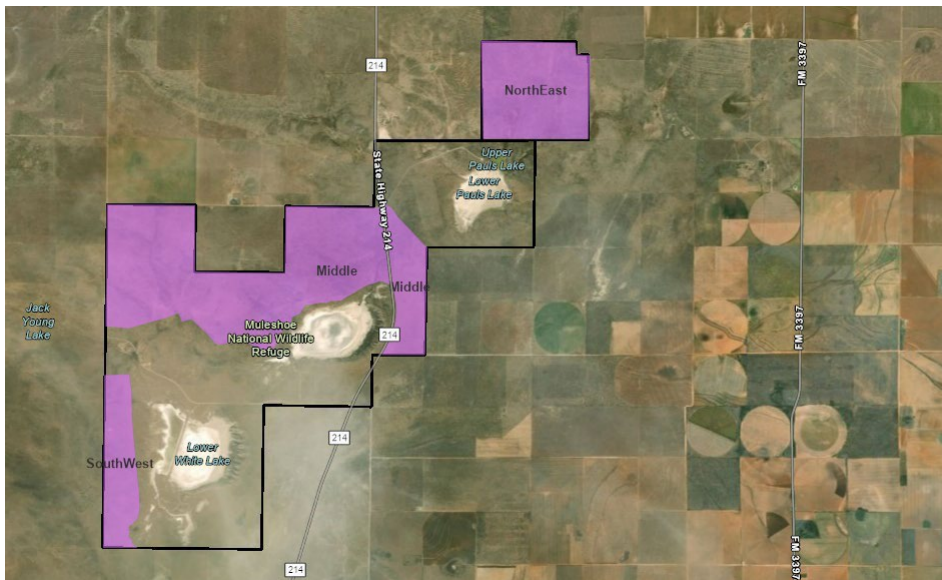
Permit Process

After hunters are selected by TPWD, the refuge will issue a hunting brochure with regulations. A State of Texas hunting license with all applicable endorsements will also be required. Be sure to check the Muleshoe National Wildlife Refuge for details. This hunt season, permits will be issued through a partnership with Texas Parks and Wildlife Department.

When searching for Muleshoe NWR hunts, select Browse Hunt Catalog, then select the Area tab. Drawings and award notifications for each hunt will be conducted at different times. Please consult Texas Parks and Wildlife Department hunt application web page. **All applications and payment must be made online here:** https://tpwd.texas.gov/huntwild/hunt/public/public_hunt_drawing/

Scouting

Permitted hunters may scout any time during normal refuge hours from public roads and areas opened to the public prior to the hunt. On scouting days, hunters do not need to check in and out at Refuge Headquarters. The refuge manager may close all or part of the refuge— including roads— without notice to safeguard resources or for safety reasons. Also, prescribed burns may be conducted in portions of hunting units during non-scouting and nonhunting dates to improve habitat.



For Additional Information Contact:

Muleshoe NWR
P.O. Box 549
Muleshoe, Texas 79347
806-674-6369

