

# Limited Permit Hunts

## Hagerman National Wildlife Refuge Hunting Regulations 2024–2025



### Welcome

Hagerman National Wildlife Refuge was established in 1946 as an overlay of part of Lake Texoma in north-central Texas. Habitat within the 11,320-acre refuge is managed for a variety of birds and wildlife.

### Accessibility

Refuge staff will accommodate hunter access needs related to impairments to the extent possible. Please call 903-786-2826 to make a request or for more information.

### Safety

Portions of the refuge do not have cell phone coverage.

Venomous snakes including copperhead, cottonmouth, timber rattlesnake, and pigmy rattlesnake along with a variety of biting and stinging insects may be present in all hunting units.

### Firearms

Persons possessing, transporting, or carrying firearms on National Wildlife Refuge System lands must comply with all provisions of State and local law. Persons may only use (discharge) firearms in accordance with refuge regulations (50 CFR 27.42 and specific refuge regulations in 50 CFR Part 32).

### Vehicles

Licensed motor vehicles are permitted on open public roads as shown on the map. Use of ATVs, UTVs, and ORVs is prohibited.

### Hunting Regulations

Hunting regulations are designed to provide safe recreational opportunities through wise use of renewable wildlife resources. Hunting is permitted in accordance with Federal regulations governing public use on National Wildlife Refuges as set forth in Title 50 of the Code of Federal Regulations.

Hunting will be in accordance with applicable State of Texas regulations subject to the conditions stated below.

### Access

*When:* Hunters may access the refuge for scouting anytime the refuge is open to the public prior to their hunt segment. Permitted hunters will be allowed to place hunt stands and blinds the day before their hunt segment begins. Access for hunting begins each hunt day at 5:00 a.m. and hunters must depart refuge lands by 1.5 hours after legal sunset.

*Where:* Hunters may park along open public roads or in designated parking areas to access refuge hunt units. Do not block roads, gates, driveways, or mail boxes. Entry into gated hunt units is by foot or bicycle only. Access to the refuge from private property is prohibited.

### Tree Stands/Blinds

Hunting is from stands, blinds, or by stalking (still hunting) only. Only portable blinds and stands are allowed (one per hunter) and must be removed at the close of the hunt segment. Permitted hunters will be allowed to place hunt stands and blinds the day before their hunt segment begins.

### Hunter Registration - Deer

*Special Regulations for Deer Hunters:* Deer hunters must attend a hunt orientation prior to their hunt (specific orientation instructions will be provided by Refuge staff). Those unable to attend the orientation must read and sign a copy of the orientation sheet before entering any hunt unit. Hunters must register at the check station on Thursday morning. A photo ID, hunting license with an archery endorsement, and a **bowhunter education card** must be presented for registration. Entry into any hunt unit is not allowed prior to 9:00 a.m. on Thursday. Hunters must leave the hunt units by 2:30 p.m. on Thursday. Any hunter entering the unit before 9:00 a.m. or still in the unit after 2:30 p.m. will be disqualified from the hunt.

*(Continued on next panel)*

## Hunter Registration - Wild Turkey and Feral Hog

*Wild turkey and feral hog hunters:* Register using the QR code provided below. A photo ID, hunting license with any required endorsements, and hunt permit issued by TPWD or the refuge must be carried at all times while hunting.

### Harvest Reporting

*White-tailed deer* – all deer harvested must be brought to the refuge hunter check station the day of the harvest.

*Feral hog* – all harvested hogs must be reported to the refuge using the QR code provided below. Report on sign-in sheet, or call 903-786-2826.

*Wild turkey* – all harvested turkey must be recorded using the QR code provided below **and** checked in on-line using the Texas Parks and Wildlife Department My Texas Hunt Harvest app.

### Turkey Hunt QR Code



### Feral Hog Hunt QR Code



Hagerman National Wildlife Refuge  
6465 Refuge Road  
Sherman, Texas 75092

903-786-2826

[www.fws.gov/refuge/hagerman](http://www.fws.gov/refuge/hagerman)

Relay service TTY/Voice: 7-1-1 or 1-800-735-2988

April 2024



| Hunt Type                             | Season Dates  | Harvest                                      | Hunt Areas   | Other Regulations or Reminders   |
|---------------------------------------|---|--|--|--|
| <b>Archery-only White-tailed Deer</b> | Nov. 8-10, 2024 (Friday-Sunday)<br>Nov. 22-24, 2024 (Friday-Sunday)<br>Dec. 6-8, 2024 (Friday-Sunday) | 4 deer. No more than 2 bucks*                | Goode, Meyers Branch, and Harris Creek                               | Proof of Bowhunter Education required.<br><br>Archery only. State regulations apply except baiting is prohibited.<br><br>Doe harvest incentive available. Inquire with refuge staff for details.<br><br>See prohibited activities. |
| <b>Feral hog</b>                      | Jan. 24-26, 2025 (Friday-Sunday)  | Unlimited harvest with no size restrictions. | Big Mineral, Sandy, Godwin, Goode, Meyers, and SE Harris Creek Units | Shotguns and muzzleloaders with buckshot or slugs, archery equipment, airguns, and arrow guns may be used.<br><br>See prohibited activities.   |
| <b>Spring Wild Turkey</b>             | April 22-24, 2025 (Tuesday-Thursday)  | One gobbler.                                 | Big Mineral, Sandy, Godwin, Goode, Meyers, and SE Harris Creek Units | Only shotguns and archery equipment may be used.<br><br>Federally-approved non-toxic shot (No. 4 or smaller) are required while hunting with shotguns. Upland game bird endorsement required.<br><br>See prohibited activities.    |

**State hunting regulations, shooting hours, methods of take, bag limits, and license requirements apply in addition to refuge specific hunting regulations.**

**\* A legal buck is defined as a buck with an inside spread of at least 13 inches or greater, or at least one unbranched antler. Only one of the two bucks may have an inside spread of 13 inches or greater, and no more than two antlerless. It is unlawful to take more than one buck with an inside spread of 13 inches or greater, or having two branched antlers.**

**Note: Aerial feral hog control occurs on refuge lands 1-3 days per year in February/March.**

## Signs and Boundaries

Please respect the following signs:

- No Vehicles
- Do Not Block Gate
- Closed Area: All entry prohibited

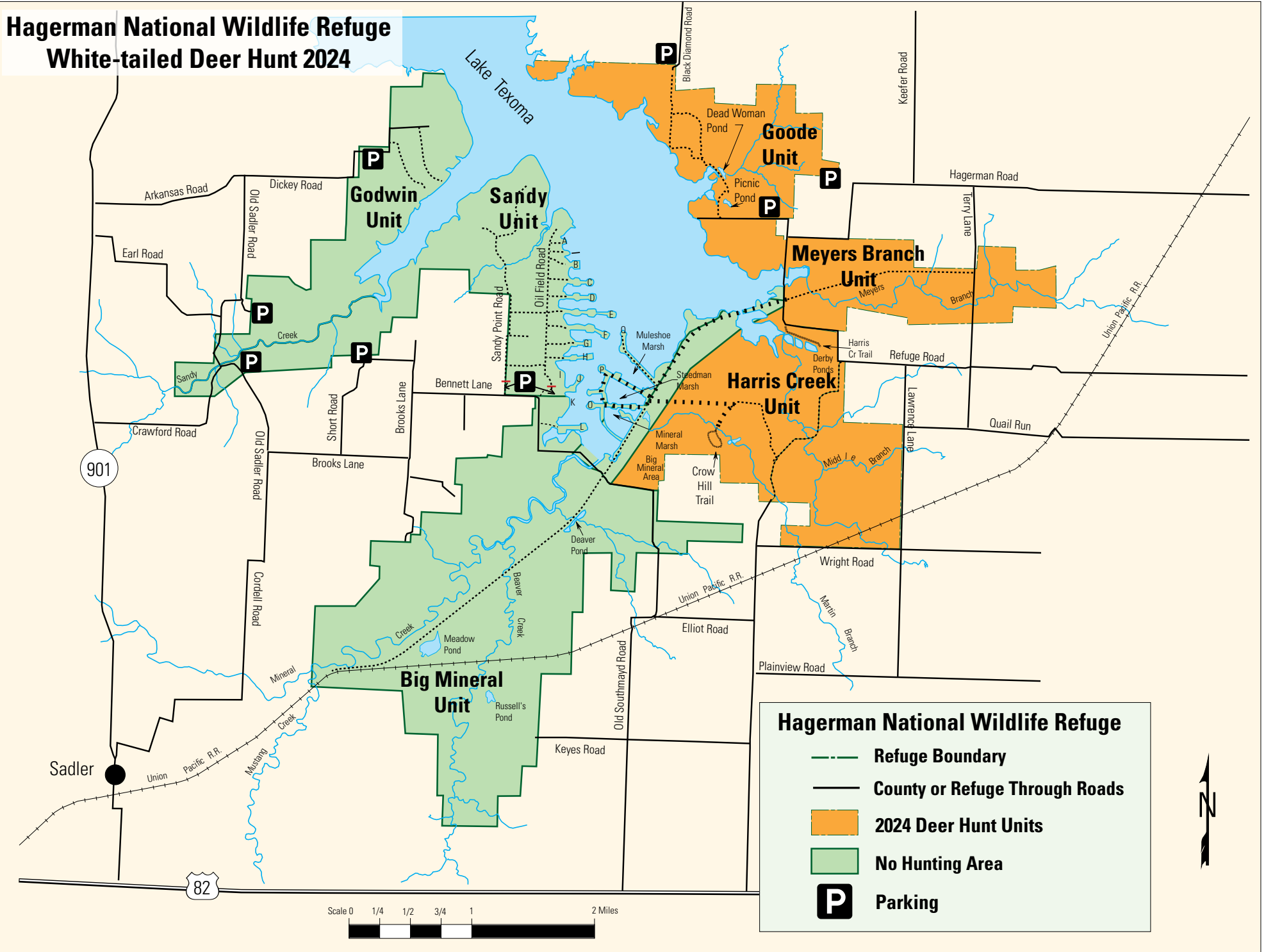
## Prohibited Activities

- Taking or attempting to take any species not listed on this information sheet, including coyote and bobcat
- Entering of a hunt unit without a valid hunt permit
- Hunting within 150 feet (45 meters) of any day use area or designated hiking trail
- Baiting and/or hunting over bait
- Use or possession of lead shot
- Retrieving or tracking game on private land without law enforcement escort or written permission from landowner or agent
- Searching for or removal of any natural items such as antlers, skulls, plants, historic, and archaeological features
- Use of electronic or photographic trail monitoring devices
- Cutting trees or limbs greater than one inch in diameter
- Taking or harming any wildlife not permitted for take
- Marking or flagging any tree or refuge feature with paint, or any permanent material or substance not designed for complete removal at the end of the hunt
- Permanent tree stands, nails, screw-in steps, or other items that penetrate the outer bark of a tree
- Access to the Refuge from private property
- Speeding (speed limit 20 mph unless otherwise posted)
- Possession of alcoholic beverages while hunting
- Use of dogs
- Littering or abandoning any personal property
- Target shooting with firearms
- Camping and campfires



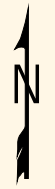
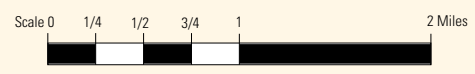
# Hagerman National Wildlife Refuge

## White-tailed Deer Hunt 2024



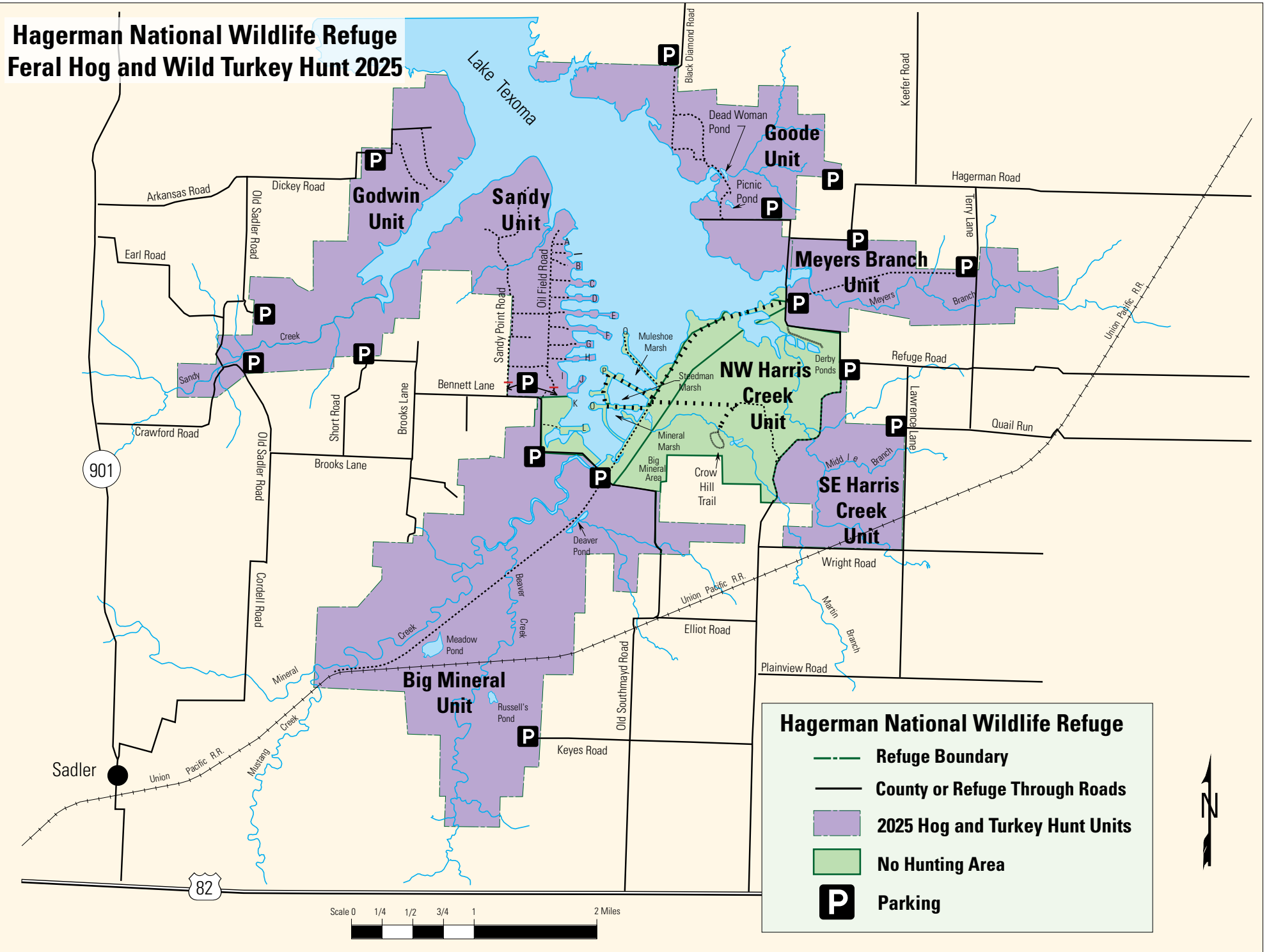
**Hagerman National Wildlife Refuge**

- Refuge Boundary
- County or Refuge Through Roads
- 2024 Deer Hunt Units
- No Hunting Area
- P Parking



# Hagerman National Wildlife Refuge

## Feral Hog and Wild Turkey Hunt 2025



### Hagerman National Wildlife Refuge

- Refuge Boundary
- County or Refuge Through Roads
- 2025 Hog and Turkey Hunt Units
- No Hunting Area
- P Parking

