

Potter County Cross Bar Mgt. Area

Hunting Information

- If you decide to utilize the Canadian River to access the Cross Bar, please be aware of the river flows and conditions as it may pose serious hazards. Flooding conditions may restrict entry to the property without warning before your hunt! Check current and local weather and river conditions before coming.

For river conditions go to the following website:

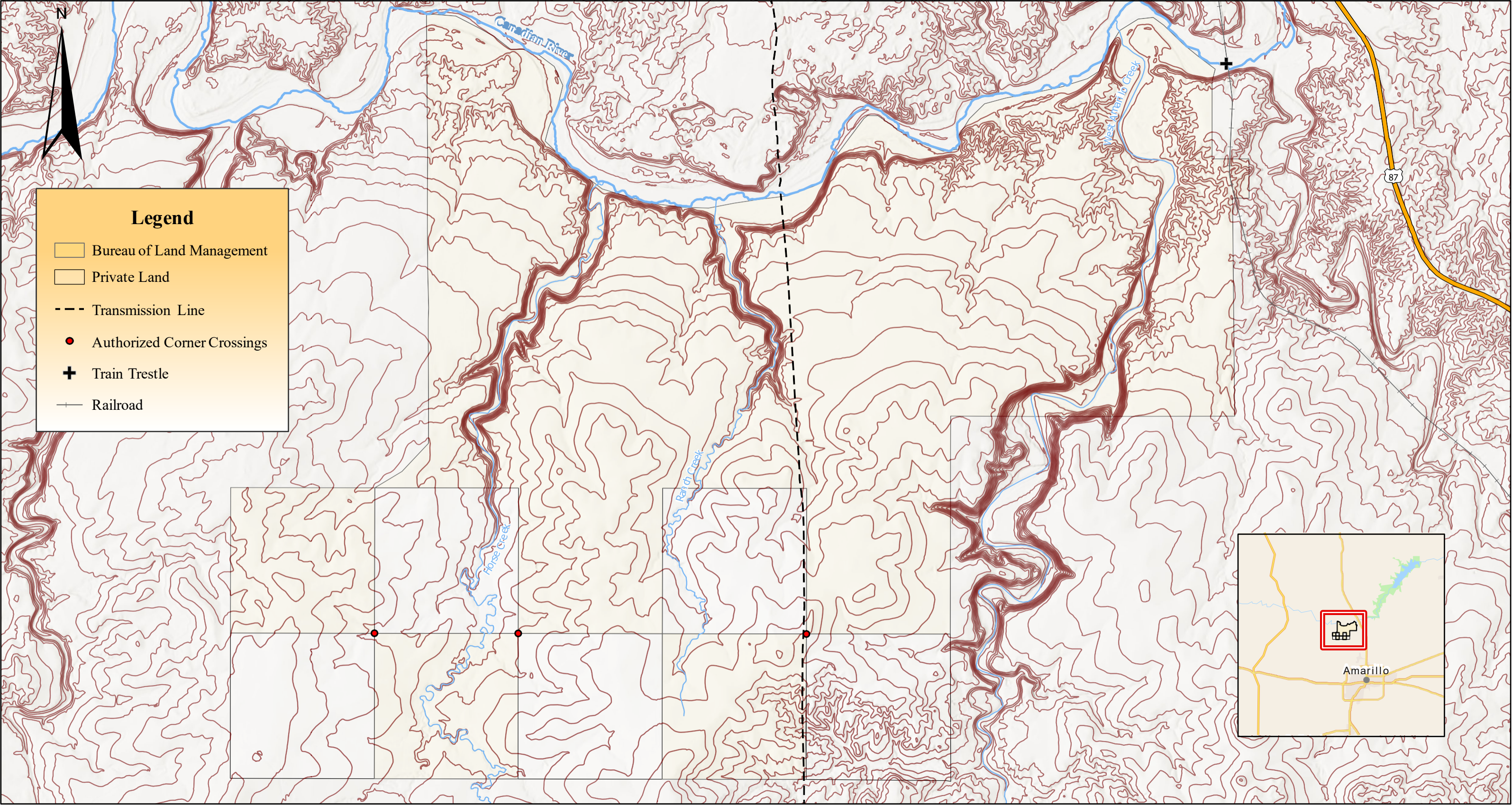
<https://dashboard.waterdata.usgs.gov/api/gwis/2.1.1/service/site?agencyCode=USGS&siteNumber=07227500&open=13922>.

- Motorized vehicles are not authorized on the property. Mountain bikes and Class 1 e-bikes are allowed on trails.
- **Only** white-tailed deer, mule deer, and unlimited feral pigs are authorized for this hunt.
- Ranch boundaries must be strictly adhered to as the area is surrounded by private lands. Private landowners have the right to prosecute for illegal trespass. See map for authorized corner crossings.
- Overnight camping is allowed.
- Open campfires are prohibited.
- Hunters must pack out what they pack in. No trash should be left behind.
- To help assist data collection, harvested animals must be reported to the Cross Bar Manager and/or the TPWD District Biologist, and hunters should call or text the Cross Bar Manager when they arrive for their hunt and when they abandon their hunt.
- All TPWD hunting rules and regulations, and 43 CFR Subpart 8360 – Enforcement and Compliance must be strictly adhered to.
- It is the responsibility of the hunters to have all required hunting licenses, tags, and hunter education before the hunt.
- All observed illegal activity should be reported to the BLM Cross Bar Outdoor Recreation Planner, the TPWD District Biologist, or the county Game Warden.

BLM Cross Bar Outdoor Recreation Planner (806) 231-2009

TPWD Biologist (806) 476-9630

TPWD Game Warden (806) 470-0827

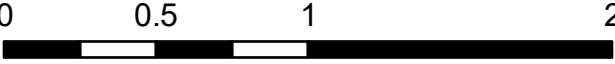


No warranty is made by the Bureau of Land Management as to the accuracy, reliability, or completeness of this data for individual use or aggregate use with other data, or for purposes not intended by BLM. Spatial information may not meet National Map Standards. This information may be updated without notification.



Scale: 1:40,000

Cross Bar Management Area



Miles



Bureau of Land Management
Oklahoma Field Office
201 Stephenson Parkway
Suite 1200
Norman, Oklahoma 73072