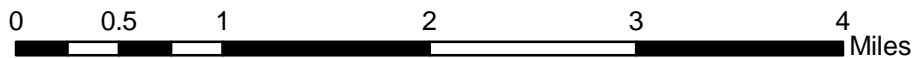
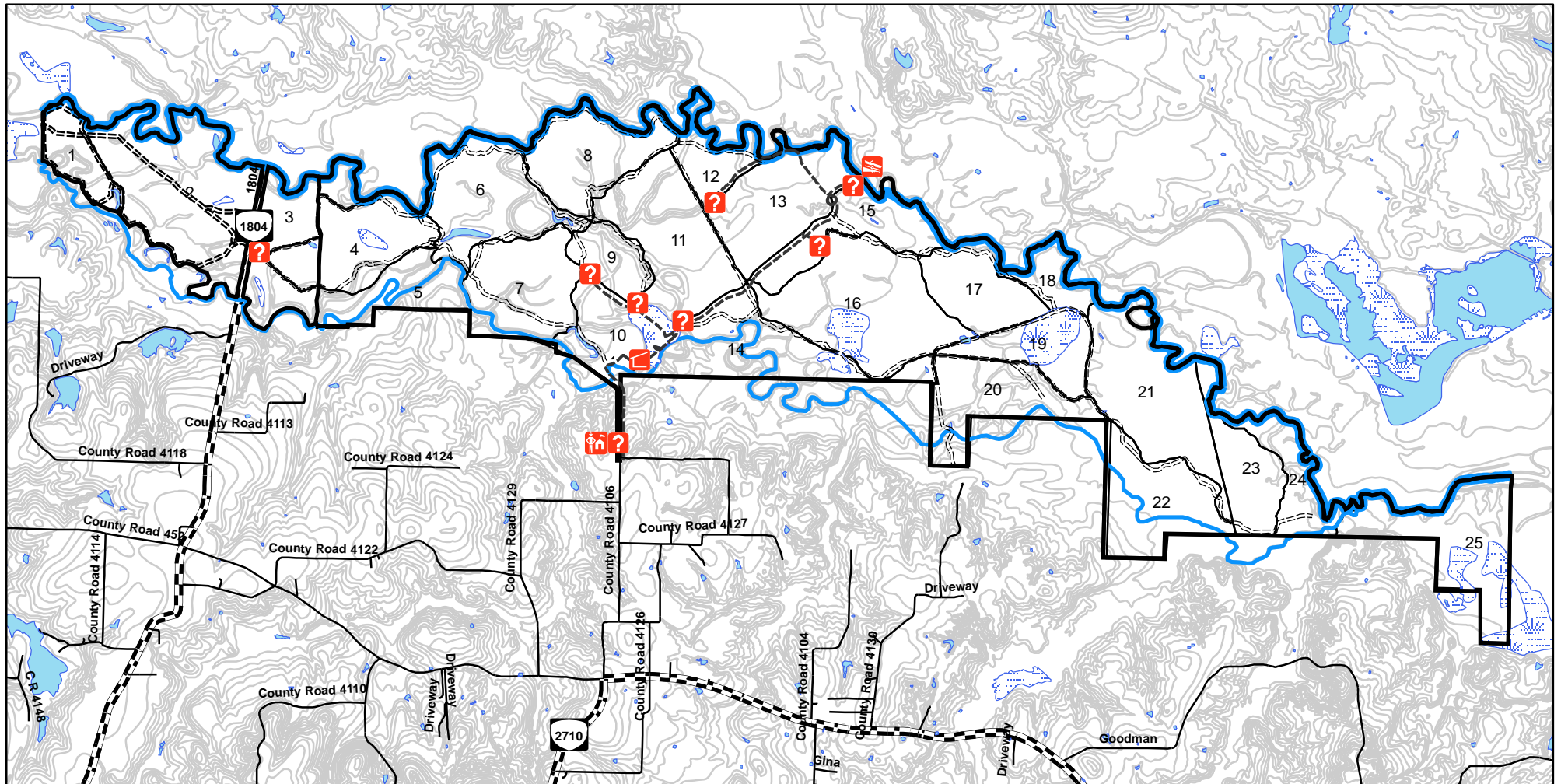


Old Sabine Bottom Wildlife Management Area

5,727 Acres / Unit 732 in Smith County



	Office		Sabine River
	Registration/Info		Old Sabine Channel
	Hunt Checkstation		WMA Roads
	Boat Ramp		Trails
	Boundary		FM Roads
	Hunt Compartments		County Roads
	Lakes and Ponds		
	Marsh		