

CENTRAL MIXEDGRASS PRAIRIE

Nature Serve ID: CES303.659

Geology: Typical of various sedimentary formations of the Rolling Plains.

Landform: Gently rolling uplands.

Soils: Generally on loams and clay loams. Often on Ecological Sites such as Clay Slopes, Loamy Prairie, Clayey Upland, Claypan Prairie, Sandy Loam, and Clay Loam.

Description: Central Mixedgrass Prairie represents the common prairie type in the Rolling Plains. This prairie often has *Schizachyrium scoparium* (little bluestem) as a dominant, with *Nassella leucotricha* (Texas wintergrass), *Bouteloua curtipendula* (sideoats grama), *Bothriochloa laguroides* ssp. *torreyana* (silver bluestem), *Bouteloua hirsuta* (hairy grama), *Bouteloua gracilis* (blue grama), *Bouteloua dactyloides* (buffalograss), *Andropogon gerardii* (big bluestem), *Pascopyrum smithii* (western wheatgrass), *Aristida purpurea* (purple threeawn), *Sporobolus cryptandrus* (sand dropseed), and *Pleuraphis mutica* (tobosa) also commonly encountered. Grazing tends to favor shortgrass species such as *Bouteloua dactyloides* (buffalograss) and *Bouteloua gracilis* (blue grama). Sandy soils may be similar, but typically have greater cover of *Sporobolus cryptandrus* (sand dropseed) and forbs such as *Eriogonum annuum* (annual wildbuckwheat), *Heterotheca canescens* (gray goldaster), *Dimorphocarpa candicans* (Palmer's spectaclepod), and *Gaillardia pulchella* (Indian blanket). This system is frequently invaded by juniper (primarily *Juniperus pinchotii* (redberry juniper)), *Ziziphus obtusifolia* (lotebush), and *Prosopis glandulosa* (mesquite), and sandier sites may contain some *Artemisia filifolia* (sand sage) and *Quercus havardii* (Havard's shin oak).

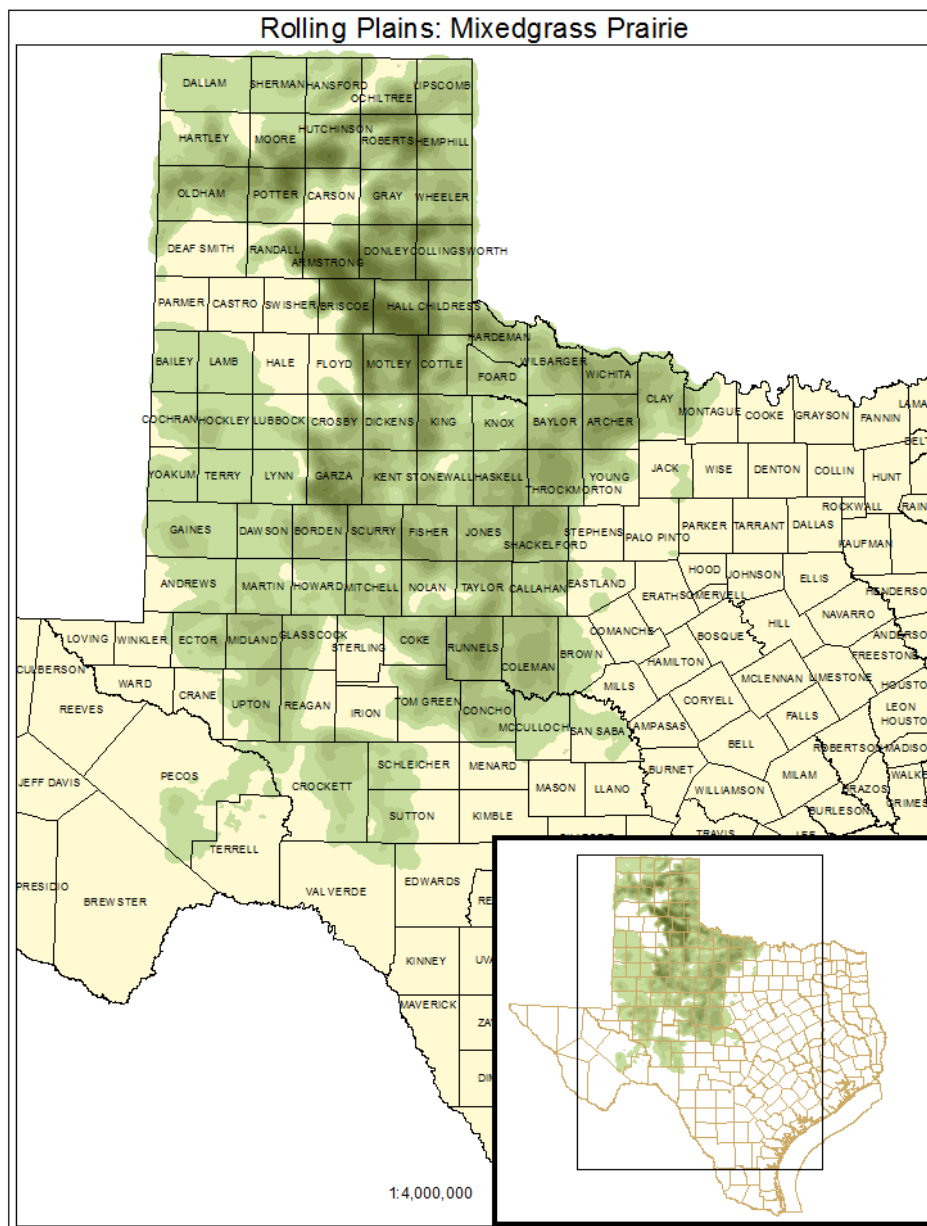
ECOLOGICAL MAPPING SYSTEMS:

ROLLING PLAINS: MIXEDGRASS PRAIRIE

Mapping System ID: 307

EMS Description: Grassland dominated by species such as *Schizachyrium scoparium* (little bluestem), *Nassella leucotricha* (Texas wintergrass), *Bouteloua curtipendula* (sideoats grama), and *Bothriochloa laguroides* ssp. *torreyana* (silver bluestem). This type typically occupies loam, clay loams, or sandy loams.

Distribution Map:



Example:



Public Land Occurrence:

Colorado Bend State Park: Texas Parks & Wildlife Department

Copper Breaks State Park: Texas Parks & Wildlife Department

Fort Griffin State Historic Site: Texas Historical Commission

Independence Creek Preserve: The Nature Conservancy

Lake Arrowhead State Park: Texas Parks & Wildlife Department

Lake Brownwood State Park: Texas Parks & Wildlife Department

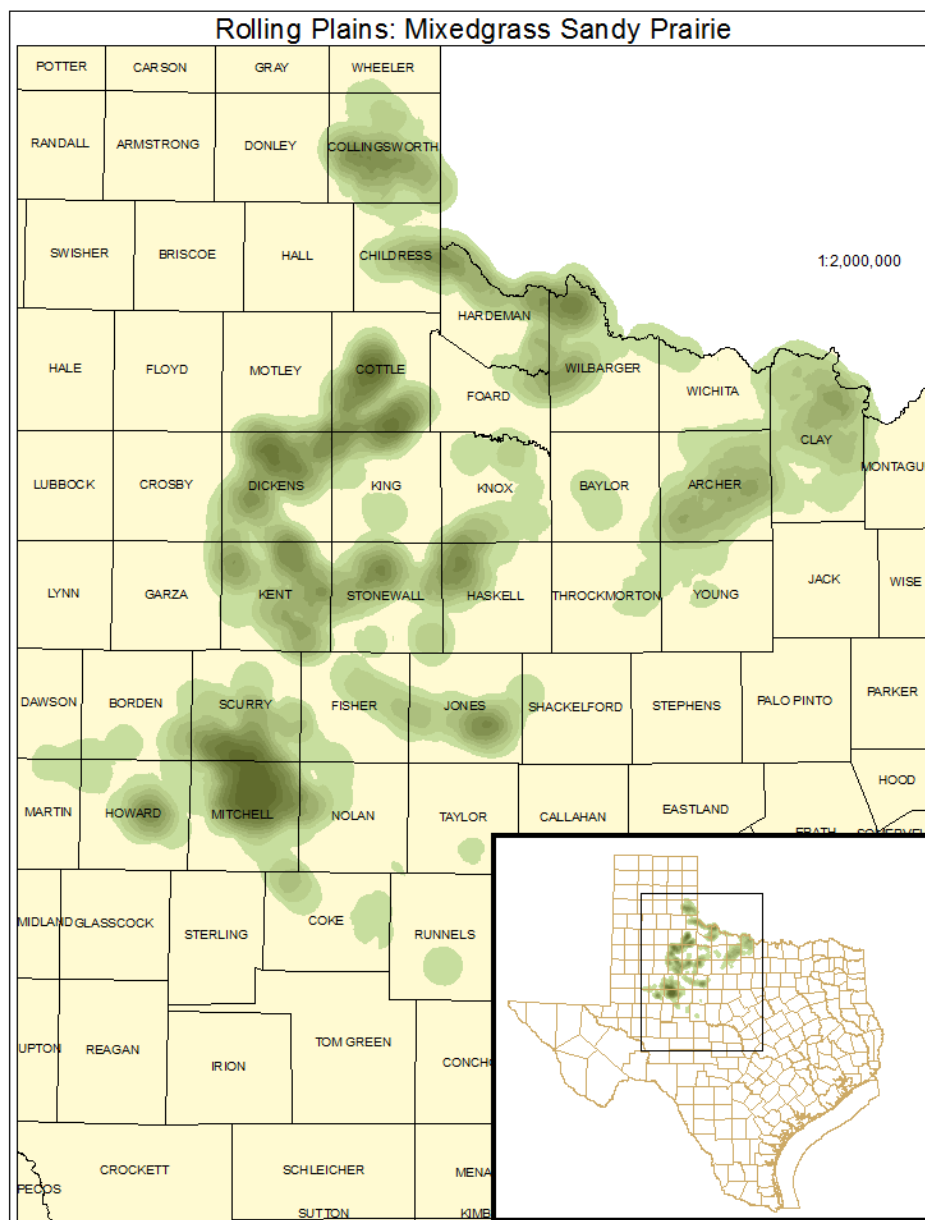
Matador Wildlife Management Area: Texas Parks & Wildlife Department

ROLLING PLAINS: MIXEDGRASS SANDY PRAIRIE

Mapping System ID: 317

EMS Description: Similar to Rolling Plains: Mixedgrass Prairie (307) but occupying sandy sites and typically with greater cover of *Sporobolus cryptandrus* (sand dropseed) and forbs such as *Eriogonum annuum* (annual wildbuckwheat), *Heterotheca canescens* (gray goldaster), *Dimorphocarpa candicans* (Palmer’s spectaclepod), and *Gaillardia pulchella* (Indian blanket). Shrubs such as *Artemisia filifolia* (sand sage), *Prosopis glandulosa* (honey mesquite), and *Quercus havardii* (Havard’s shin oak) may be encountered.

Distribution Map:



Example:



Public Land Occurrence:

Lake Colorado City State Park: Texas Parks & Wildlife Department

Matador Wildlife Management Area: Texas Parks & Wildlife Department