

## **CHIHUAHUAN SANDY PLAINS SEMI-DESERT GRASSLAND**

**Nature Serve ID:** CES302.736

**Geology:** Aeolian sand, sometimes as a thin veneer over surrounding formations, such as caliche, and sandstone.

**Landform:** Often level plains and mesas to gently rolling.

**Soils:** Sandy, loamy sand, and shallow sandy loam soils.

**Parent Description:** This grassland or steppe occurs on sandy plains throughout the Trans-Pecos and into the arid southern portions of the High Plains. The herbaceous layer is often dominated by grasses such as *Bouteloua eriopoda* (black grama), *Sporobolus flexuosus* (mesa dropseed), *Sporobolus cryptandrus* (sand dropseed), *Muhlenbergia arenicola* (sand muhly), *Sporobolus airoides* (alkali sacaton), *Cenchrus spinifex* (common sandbur), and *Aristida purpurea* (purple threeawn). Species such as *Prosopis glandulosa* (honey mesquite), *Yucca elata* (soaptree yucca), *Yucca campestris* (plains yucca), *Yucca torreyi* (Torrey's yucca), and *Larrea tridentata* (creosotebush) may occur as a scattered woody component. The non-native species *Eragrostis lehmanniana* (Lehmann lovegrass) and *Eragrostis barrelieri* (Mediterranean lovegrass) are frequently found in this system.

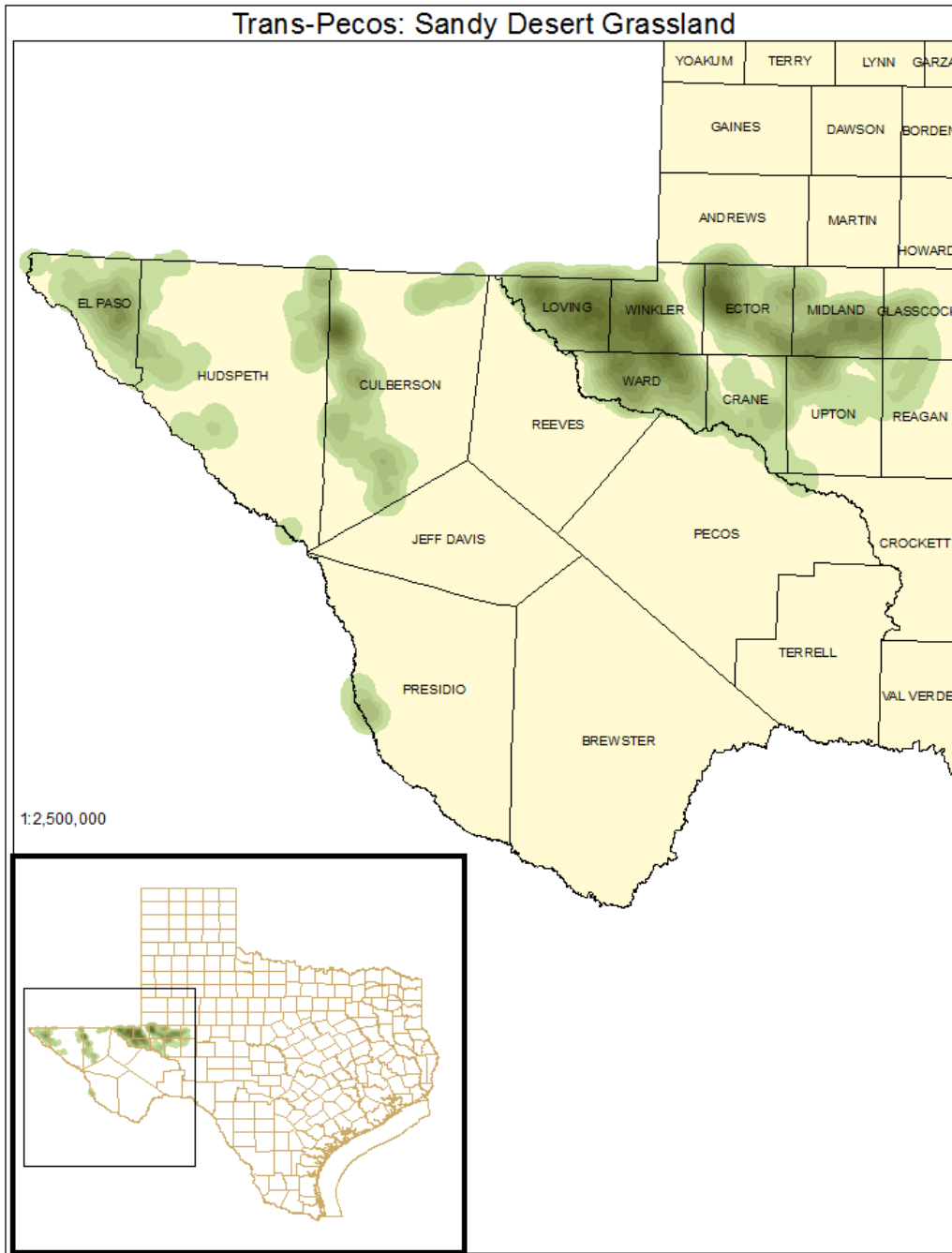
**ECOLOGICAL MAPPING SYSTEMS:**

**TRANS-PECOS: SANDY DESERT GRASSLAND**

**Mapping System ID:** 10507

**EMS Description:** As described for system.

**Distribution Map:**



**Example:**



**Public Land Occurrence:**

Guadalupe Mountains National Park: US National Park Service

Hueco Tanks State Park & Historic Site: Texas Parks & Wildlife Department