

EDWARDS PLATEAU UPLAND DEPRESSION

Nature Serve ID: CES303.654

Geology: Massive Cretaceous limestones, such as Edwards Limestone.

Landform: Internally draining depressions of karstic origin on level plateau surfaces.

Soils: Loams and clay loams, often mapped as Lakebed ecoclass.

Description: This system includes shallow wetlands formed over limestone on the Edwards Plateau of Texas. Variable in size and duration of inundation, these wetlands are typically found on level uplands. Dominant vegetation includes both graminoids and forbs tolerant of wet periods but not necessarily wetland-dependent. Dominant species may include *Pleuraphis mutica* (tobosa), *Bouteloua dactyloides* (buffalograss), *Tridens albescens* (white tridens), *Sedum pulchellum* (widowscross), *Sedum nuttallianum* (yellow stonecrop), *Sporobolus vaginiflorus* (poverty dropseed), *Chaetopappa bellidifolia* (hairy leastdaisy), *Ambrosia psilostachya* (western ragweed), *Paronychia* spp. (whitlow-wort), and the alga *Nostoc commune* (blue-green algae). *Panicum obtusum* (vine-mesquite), *Bothriochloa barbinodis* (cane bluestem), *Pascopyrum smithii* (western wheatgrass), *Bouteloua gracilis* (blue grama), *Chenopodium album* (lambsquarters), *Helianthus ciliaris* (blue-weed), and *Solanum elaeagnifolium* (silverleaf nightshade) may also be present. Some larger occurrences of this wetland system are found in Crockett, Reagan, Schleicher, Irion, and Sterling counties in the northwest Edwards Plateau (the Eldorado Plateau). In Phase I, they are found primarily in Runnels, Concho, and Sutton counties. Formation of these occurrences is apparently from solution of the underlying limestone.

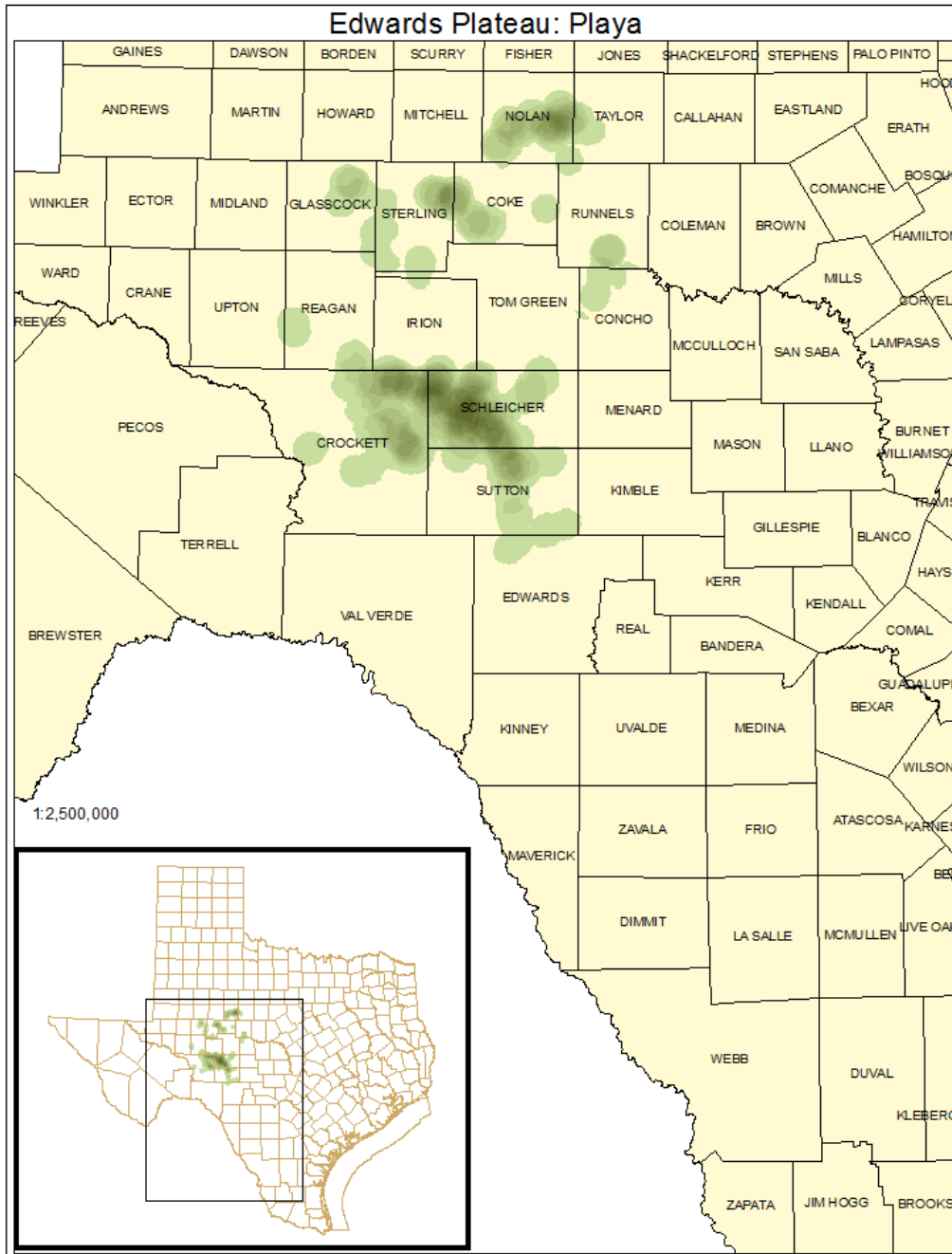
ECOLOGICAL MAPPING SYSTEMS:

EDWARDS PLATEAU: PLAYA

Mapping System ID: 1507

EMS Description: As described for system.

Distribution Map:



Example:



Public Land Occurrence:

None.