

TEXAS-LOUISIANA COASTAL PRAIRIE PONDSHORE

Nature Serve ID: CES203.541

Geology: This system occurs on the coastal Pleistocene terraces, including the Beaumont and Lissie Formations.

Landform: Local topographic lows such as ponds and swales within the generally level landscape.

Soils: Soils tend to be fine-textured, or are characterized by a relatively impermeable subsurface horizon.

Description: This system occurs as ponds or swales within the coastal prairie matrix. Soils are poorly-drained, and surface water from rainfall and local runoff is retained for much of the year (except for periods of high evapotranspiration). Occurrences are wetter than the *Tripsacum dactyloides* (eastern gamagrass) or *Panicum virgatum* (switchgrass) dominated prairie sites of the Texas-Louisiana Coastal Prairie. These wetlands are primarily herbaceous, sometimes with sparse woody cover, and are composed of various species, such as *Eleocharis quadrangulata* (squarestem spikesedge), *Fuirena squarrosa* (hairy umbrellasedge), *Cyperus haspan* (sheathed umbrellasedge), *Cyperus virens* (green flatsedge), *Rhynchospora* spp. (beaksedges), *Leersia hexandra* (clubhead cutgrass), *Steinchisma hians* (gaping panicum), *Panicum virgatum* (switchgrass), *Andropogon glomeratus* (bushy bluestem), *Xyris jupicai* (Richard's yellow-eyed grass), *Centella erecta* (erect centella), *Sagittaria papillosa* (nipplebract arrowhead), *Sagittaria longiloba* (longlobe arrowhead), *Ludwigia glandulosa* (Torrey water-primrose), *Ludwigia linearis* (narrowleaf water-primrose), *Bacopa* spp. (waterhyssops), *Hydrocotyle* spp. (pennyworts), *Symphyotrichum subulatum* (hierba del marrano), and *Sesbania* spp. (rattleboxes). Large areas of some of the occurrences may be relatively homogeneous, dominated by one or a few species. Areas of open water within the ponds may contain floating and submerged aquatic species, including *Stuckenia pectinata* (sago pondweed), *Ceratophyllum demersum* (coontail), *Brasenia schreberi* (Schreber watershield), *Nymphoides aquatica* (largeleaf floating heart), and *Nelumbo lutea* (yellow lotus).

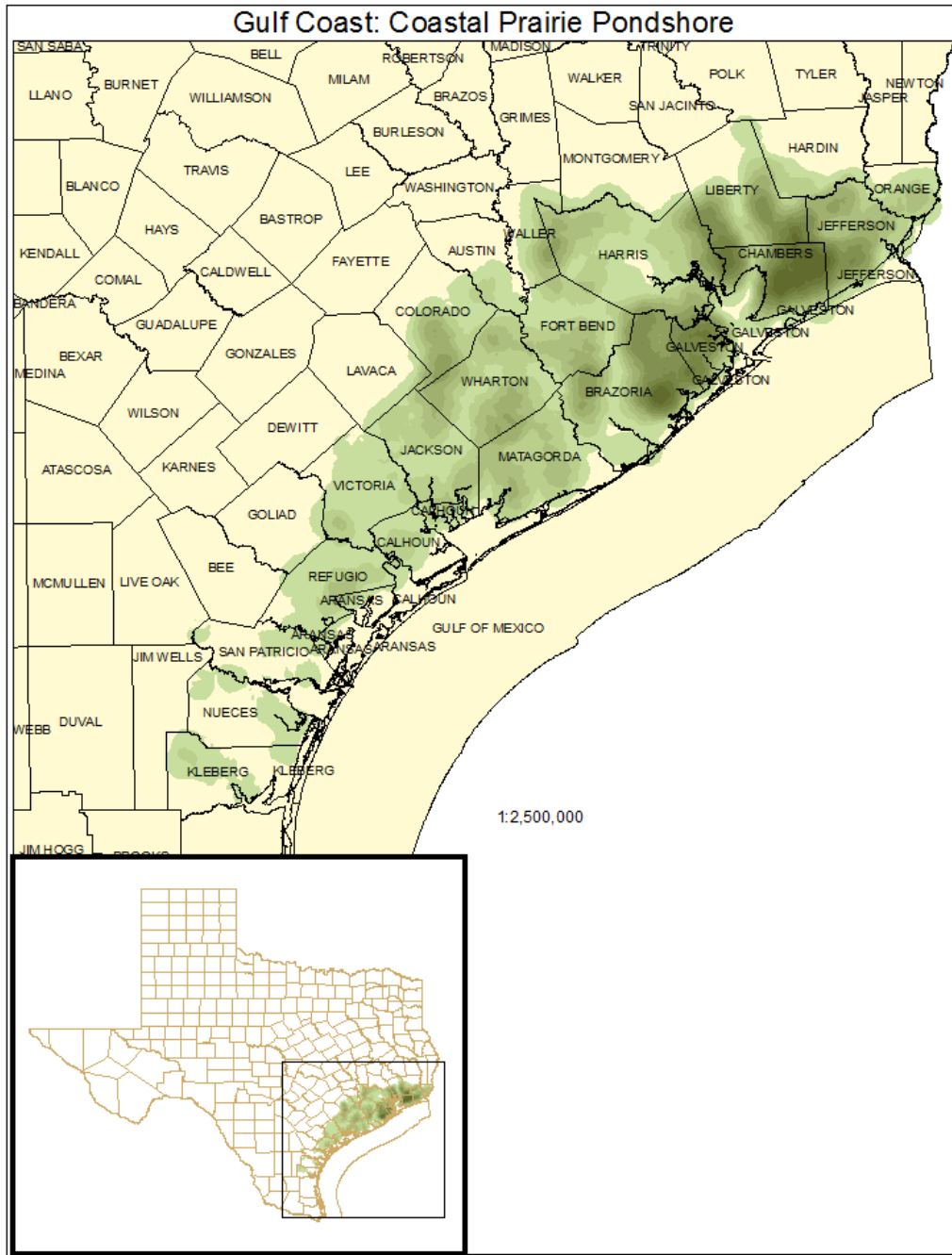
ECOLOGICAL MAPPING SYSTEMS:

GULF COAST: COASTAL PRAIRIE PONDSHORE

Mapping System ID: 5307

EMS Description: As described for system.

Distribution Map:



Example:**Public Land Occurrence:**

Anahuac National Wildlife Refuge: US Fish and Wildlife Service

Armand Bayou Nature Center

Brazoria National Wildlife Refuge: US Fish and Wildlife Service

Lake Texana: Lavaca-Navidad River Authority

McFaddin National Wildlife Refuge: US Fish and Wildlife Service

Moody National Wildlife Refuge: US Fish and Wildlife Service

Sheldon Lake State Park: Texas Parks & Wildlife Department