

CENTRAL TEXAS COASTAL PRAIRIE RIPARIAN

Nature Serve ID: *Previously undescribed system.*

Geology: Beaumont or Lissie Formations.

Landform: Upland drainages accumulating flow from surrounding, mostly level landscape. These drainages are typically erosional, sometimes incised, and rarely accrete significant alluvial deposition.

Soils: Various uplands soils. By definition, this system does not occupy bottomland ecological site types.

Description: This system represents vegetation bordering upland drainages where alluvial deposition is minimal. These sites, however, occupy locally low landscape positions and accumulate moisture from the surrounding landscape. Forested sites typically have a deciduous canopy with species such as *Celtis laevigata* (sugar hackberry), *Ulmus crassifolia* (cedar elm), *Carya illinoensis* (pecan), *Salix nigra* (black willow), *Prosopis glandulosa* (honey mesquite), *Acacia farnesiana* (huisache), and/or *Quercus nigra* (water oak). *Quercus fusiformis* (plateau live oak) may share, or sometimes dominate, the canopy. The shrub layer may be well-developed and include species such *Prosopis glandulosa* (honey mesquite), *Acacia farnesiana* (huisache), *Diospyros texana* (Texas persimmon), *Condalia hookeri* (brasil), *Ziziphus obtusifolia* (lotebush), and/or *Aloysia gratissima* (whitebrush). Some areas may lack a significant overstory and be mapped as shrublands of these species. The herbaceous layer may contain species such *Elymus virginicus* (Virginia wild-rye), *Chasmanthium latifolium* (creek oats), *Calyptracarpus vialis* (straggler daisy), *Verbesina virginica* (frostweed), and *Chloracantha spinosa* (spiny aster).

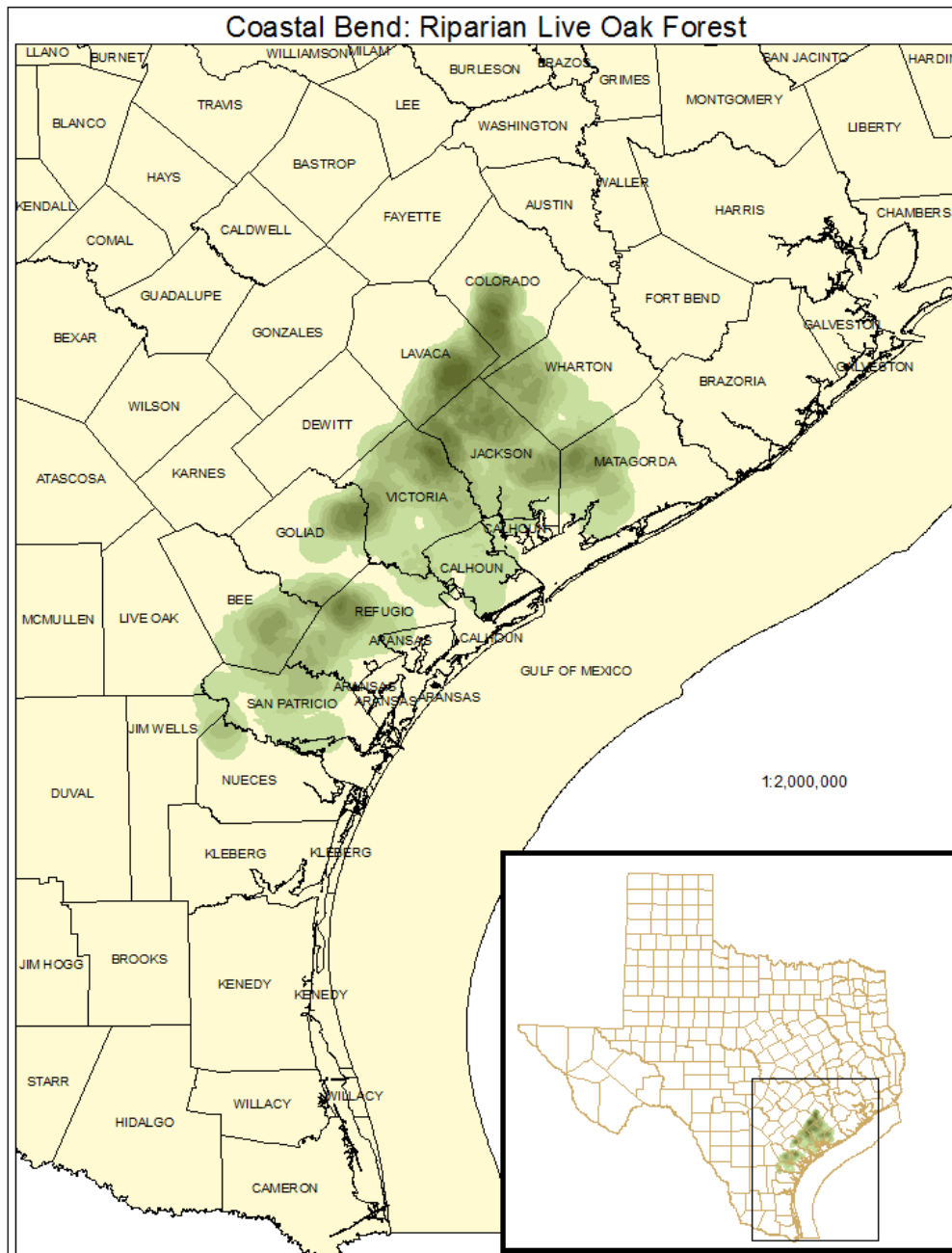
ECOLOGICAL MAPPING SYSTEMS:

COASTAL BEND: RIPARIAN LIVE OAK FOREST

Mapping System ID: 4602

EMS Description: About 12% of this system is composed of this type, where *Quercus fusiformis* (plateau live oak) or, in some cases *Ehretia anacua* (anacua), dominates the overstory.

Distribution Map:



Example:

Not available at this time.

Public Land Occurrence:

Lake Texana: Lavaca-Navidad River Authority

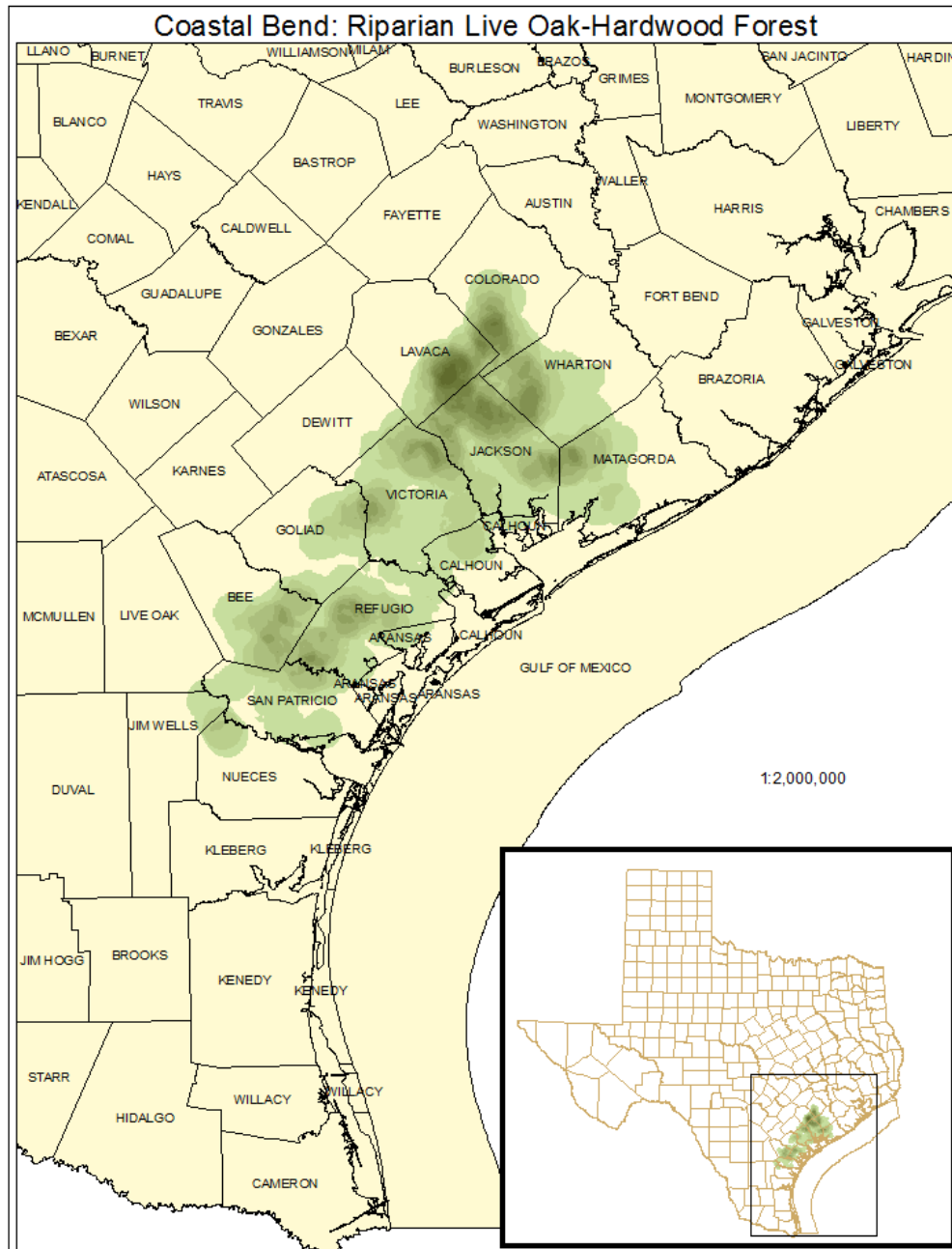
Welder Wildlife Refuge: US Fish and Wildlife Service

COASTAL BEND: RIPARIAN LIVE OAK / HARDWOOD FOREST

Mapping System ID: 4603

EMS Description: Forests or woodlands where canopy dominance is shared by broadleaf evergreen species such as *Quercus fusiformis* (plateau live oak) or *Ehretia anacua* (anacua), and deciduous species such as *Celtis laevigata* (sugar hackberry), *Ulmus crassifolia* (cedar elm) and others.

Distribution Map:



Example:



Public Land Occurrence:

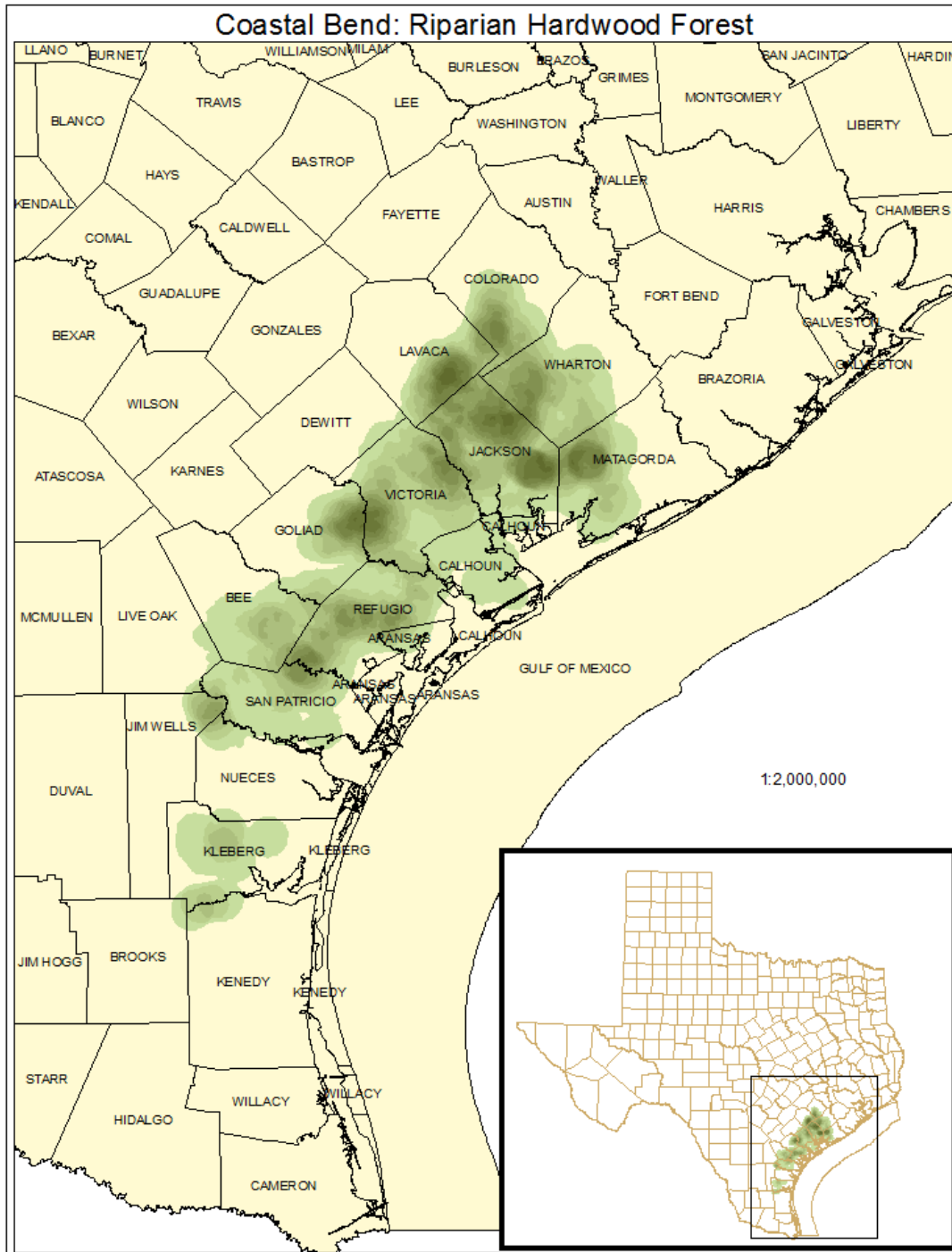
None.

COASTAL BEND: RIPARIAN HARDWOOD FOREST

Mapping System ID: 4604

EMS Description: As described for the system, where deciduous canopy species predominate.

Distribution Map:



Example:



Public Land Occurrence:

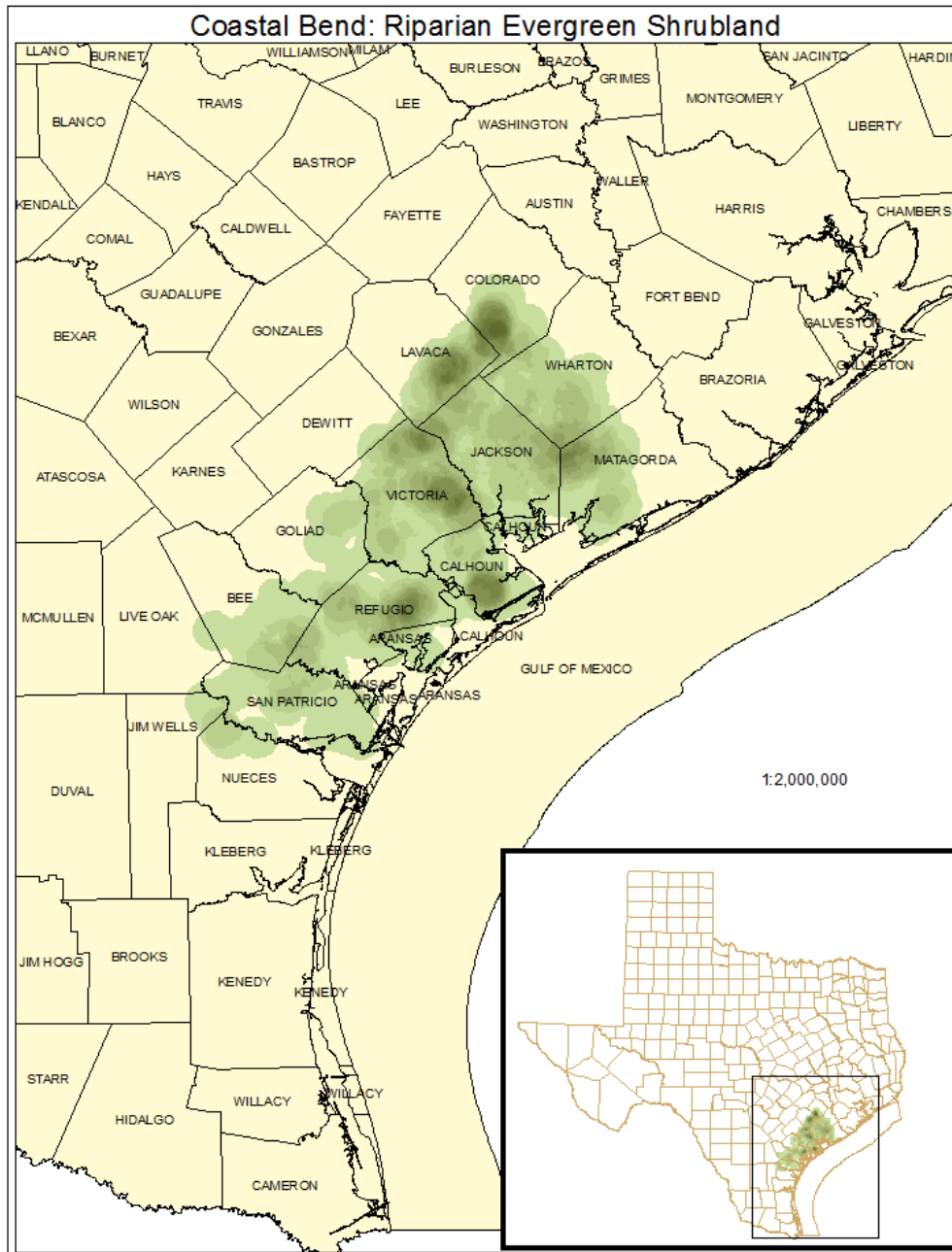
Lake Texana: Lavaca-Navidad River Authority

COASTAL BEND: RIPARIAN EVERGREEN SHRUBLAND

Mapping System ID: 4605

EMS Description: Upland drainages where shrubs such as *Ilex vomitoria* (yaupon), *Zanthoxylum fagara* (colima), *Rosa bracteata* (Macartney rose), or *Acacia farnesiana* (huisache) dominate. *Celtis laevigata* (sugar hackberry), *Celtis ehrenbergiana* (granjeno), and *Prosopis glandulosa* (honey mesquite) are often present.

Distribution Map:



Example:

Not available at this time.

Public Land Occurrence:

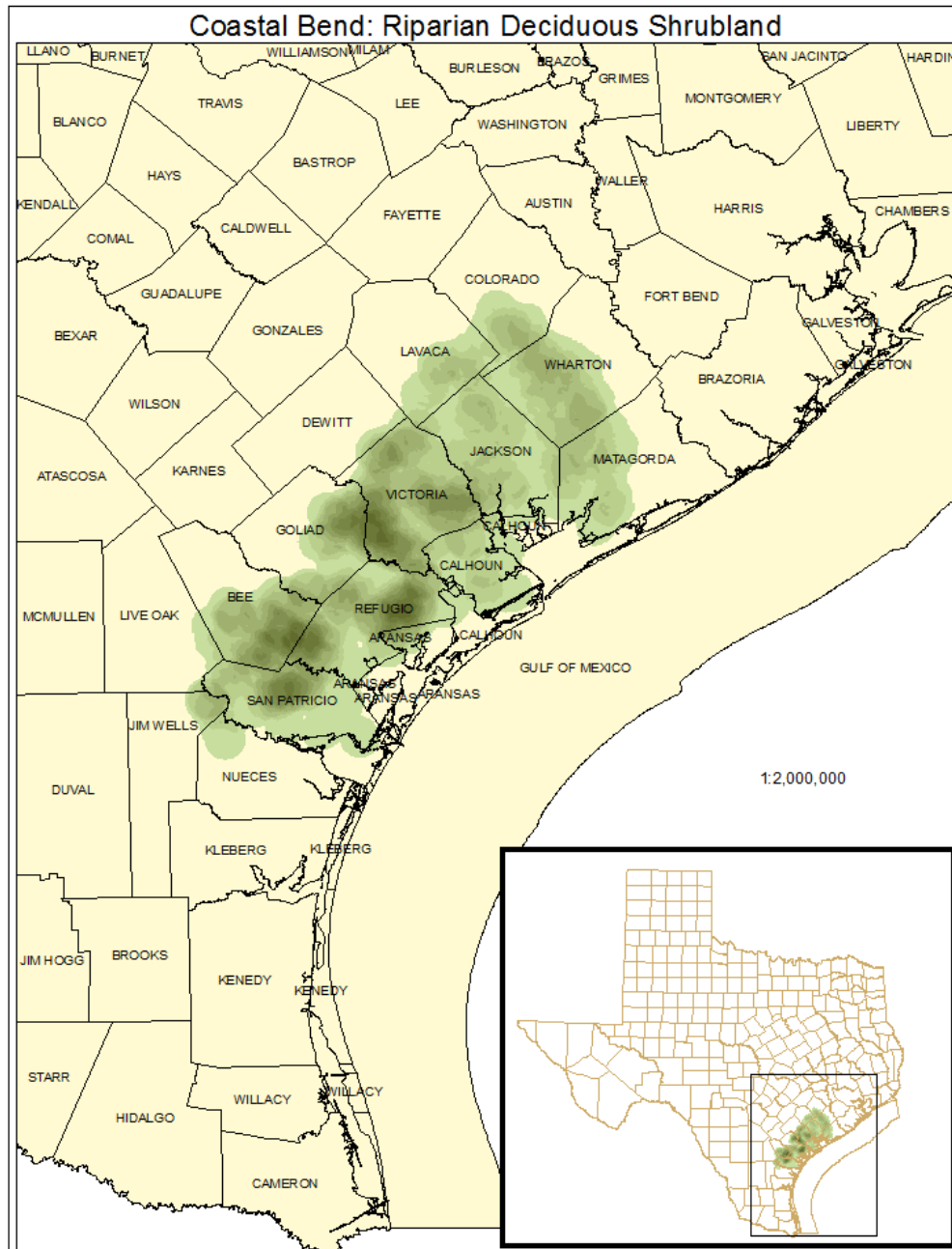
None.

COASTAL BEND: RIPARIAN DECIDUOUS SHRUBLAND

Mapping System ID: 4606

EMS Description: Primarily disturbance shrublands of upland drainages dominated by species such as *Prosopis glandulosa* (honey mesquite), *Acacia farnesiana* (huisache), small *Celtis laevigata* (sugar hackberry), *Salix nigra* (black willow), or *Cephalanthus occidentalis* (common buttonbush).

Distribution Map:



Example:



Public Land Occurrence:

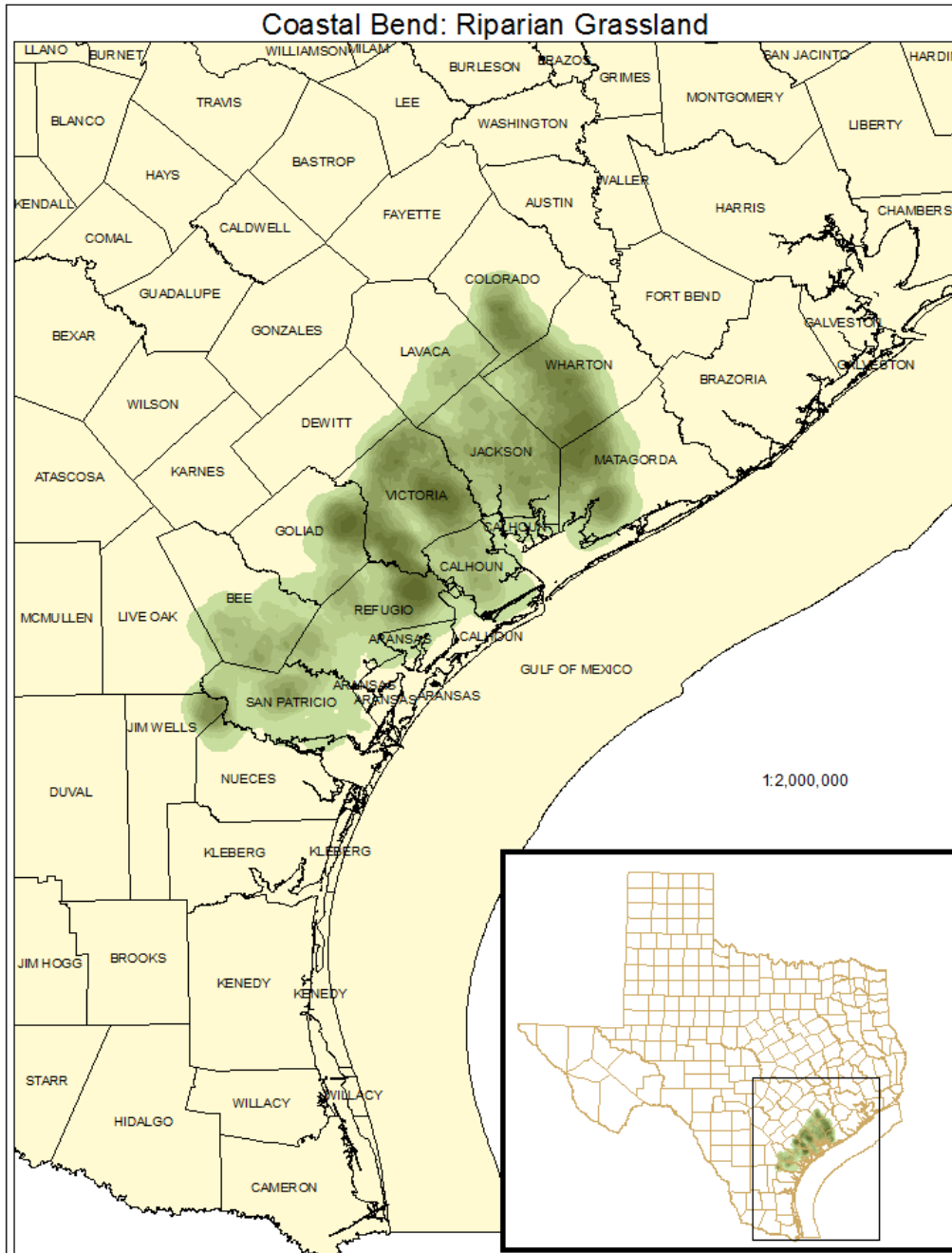
Lake Texana: Lavaca-Navidad River Authority
Welder Wildlife Refuge: US Fish and Wildlife Service

COASTAL BEND: RIPARIAN GRASSLAND

Mapping System ID: 4607

EMS Description: Sites on upland drainages that often represent managed grasslands dominated by *Cynodon dactylon* (bermudagrass), *Paspalum notatum* (bahiagrass), or *Bothriochloa ischaemum* var. *songarica* (King Ranch bluestem).

Distribution Map:



Example:

Not available at this time.

Public Land Occurrence:

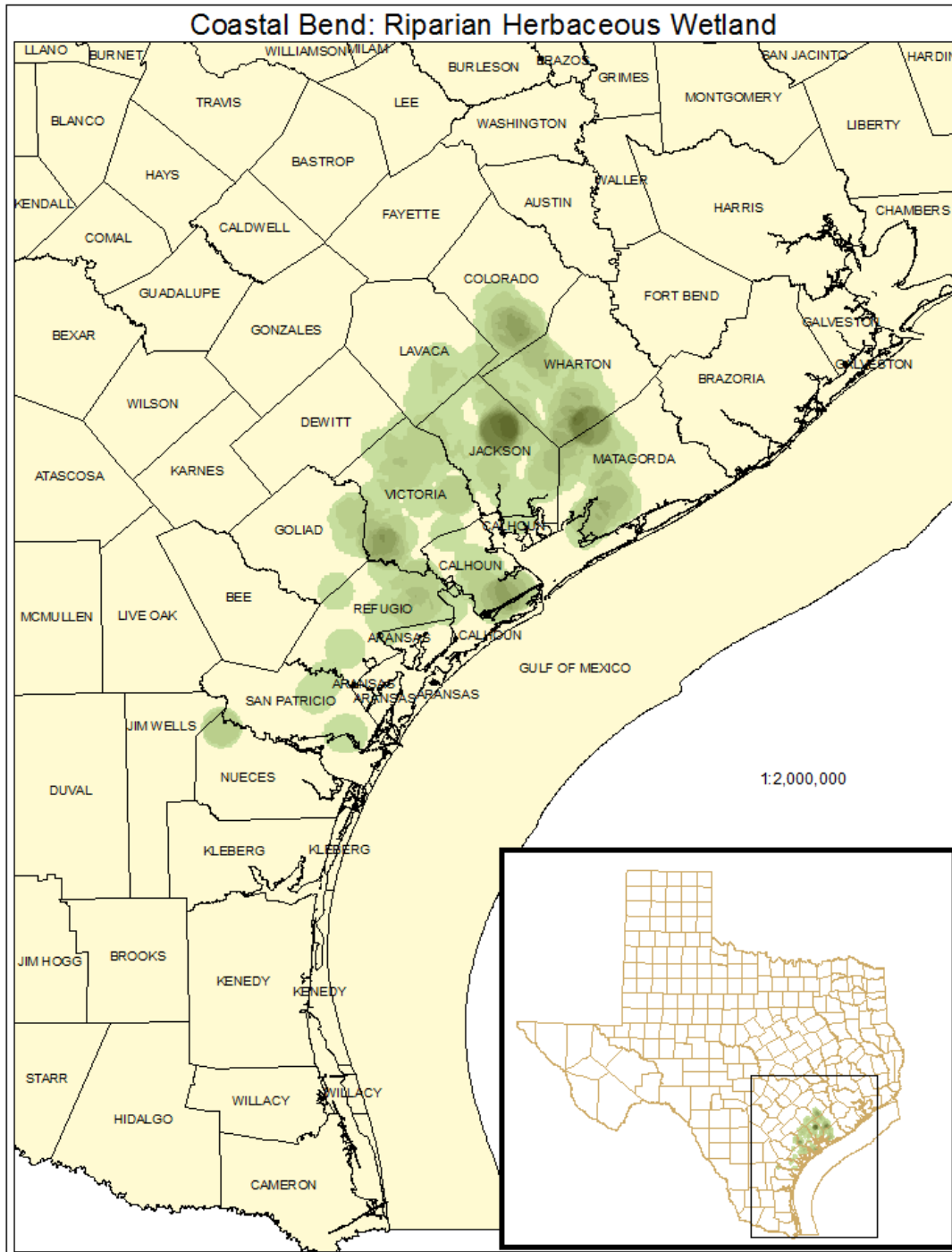
None.

COASTAL BEND: RIPARIAN HERBACEOUS WETLAND

Mapping System ID: 4617

EMS Description: Herbaceous dominated wetlands along upland drainages.

Distribution Map:



Example:

Not available at this time.

Public Land Occurrence:

Lake Texana: Lavaca-Navidad River Authority