



Dinosaur Valley State Park Trails Map

1629 Park Road 59
Glen Rose TX 76043
(254) 897-4588
www.texasstateparks.org

LEGEND

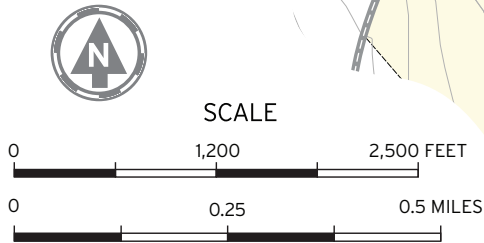
- Headquarters
- Restrooms
- Parking
- Park Store
- Track Site
- Scenic Overlook
- Playground
- Amphitheater
- Picnic Area
- Tent Sites
- Campsites with Water & Electricity
- Group Camping
- Primitive Camping
- Trailhead

NOTES:

All trails allow hiking and biking unless otherwise indicated. Contour intervals are 10 feet. Trail lengths are in miles. Elevation levels are in feet.

No claims are made to the accuracy of the data or its suitability to a particular use.

Map compiled by Texas State Parks staff.



POINTS OF INTEREST

(GPS coordinates shown in degrees, minutes, seconds)

1 DINOSAUR MODELS
32° 14' 51.800" N 97° 48' 57.800" W
Take your picture with the dinosaur models featured at the 1964-65 New York World's Fair.

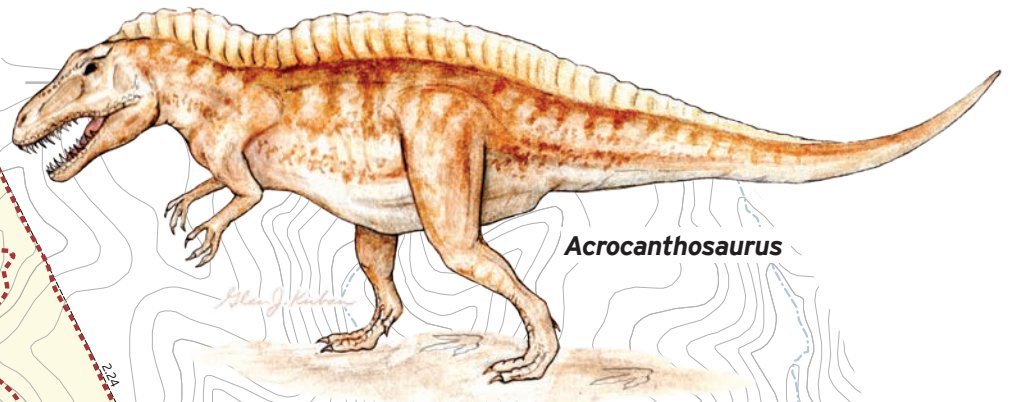
2 MAIN TRACK SITE
32° 15' 10.200" N 97° 49' 7.400" W
You're standing where Roland T. Bird made the world's first discovery of a sauropod trackway.

3 BLUE HOLE
32° 14' 56.200" N 97° 49' 5.400" W
View theropod tracks on the limestone ledge or take a dip in an old-time swimming hole.

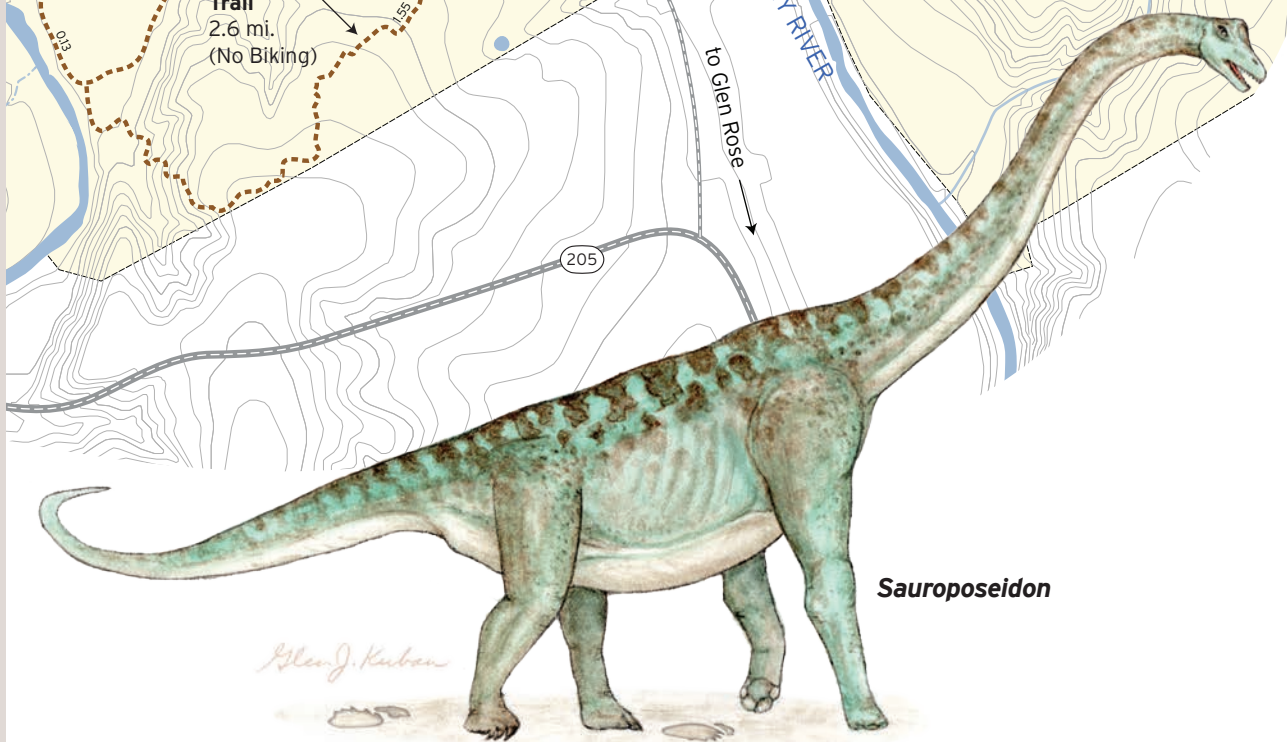
4 BALLROOM TRACK SITE
32° 14' 52.000" N 97° 49' 8.300" W
Discover hundreds of tracks moving in all directions as if the dinosaurs were dancing!

5 PALUXY RIVER SCENIC OVERLOOK
32° 15' 20.944" N 97° 49' 12.501" W
Enjoy a spectacular scenic view of the Paluxy River valley.

6 BUCKEYE CREEK
32° 14' 51.92" N 97° 48' 13.11" W
Hike the creek bed and experience cascading pools and unique rock formations.



Acrocanthosaurus



Sauroposeidon

In accordance with Texas State Depository Law, this publication is available at the Texas State Publications Clearinghouse and/or Texas Depository Libraries.

© 2018 Texas Parks and Wildlife Department PWD MP P4503-0094S (7/18)

Texas State Parks is a division of the Texas Parks and Wildlife Department.

TPWD receives funds from the USFWS. TPWD prohibits discrimination on the basis of race, color, religion, national origin, disability, age, and gender, pursuant to state and federal law. To request an accommodation or obtain information in an alternative format, please contact TPWD on a Text Telephone (TDD) at (512) 389-8915 or by Relay Texas at 7-11 or (800) 735-2989. If you believe you have been discriminated against by TPWD, please contact TPWD or the U.S. Fish and Wildlife Service, Office for Diversity and Workforce Management, 5275 Leesburg Pike, Falls Church, VA 22041.

Dinosaur Valley State Park



FOR EMERGENCIES, PLEASE CALL 9-1-1.

Walk where the dinosaurs roamed.

Make tracks of your own in this park where dinosaurs left their footprints. As you wade across the cool, clear waters of the Paluxy River, look for the footprints of *Sauroposeidon proteles*, the official state dinosaur of Texas, and *Acrocanthosaurus*. Explore dinosaur track sites and over 20 miles of trails, which take you to the limestone ridges overlooking the Paluxy River Valley.

STAYING SAFE

KNOW YOUR LIMITS. Prepare for sun and heat. Wear sunscreen, insect repellent and appropriate clothing/hiking shoes.

DRINK PLENTY OF WATER. Your body quickly loses fluids when you're on the trail. Bring a quart of water per hour of activity.

TELL OTHERS WHERE YOU'LL BE. If possible, avoid exploring alone. Tell someone where you are going and when you plan to return.

WEAR A HELMET. When biking, check with park HQ to match the trail to your skill level. Wear a helmet to protect yourself in case of a crash.

POTENTIALLY HARMFUL PLANTS AND ANIMALS MAY LIVE HERE. You'll see them more easily if you stay on trails. Do not approach wildlife!

FLASH FLOODING CAN OCCUR. Be alert to local conditions as weather can change rapidly.

TRAILS CAN BE STEEP AND ROCKY. Watch out for steep cliffs and bluffs. You may find a walking stick helpful. Exercise caution when crossing the river, as the rocks are very slippery. Consider wearing boots or waders.

TRAIL ETIQUETTE

Trash your trash. Pack out all of your trash and Leave No Trace.

Leave feeding to nature. Feeding wild animals will make them sick. Please do not feed them.

Don't Pocket the Past. Help preserve Texas heritage. Leave artifacts where you find them and report their location to a ranger.

Campfires are not permitted in the backpacking camping area due to potential for ground scarring and wildfires.



Golden-cheeked warbler

TRAIL	DISTANCE	TIME	DIFFICULTY	DESCRIPTION
LIMESTONE LEDGE TRAIL (Hiking Only)	1.0 mi.	2 hrs.	Moderate	Be prepared to get your feet wet crossing the Paluxy River; then explore the Main Track Site where R.T. Bird discovered the first sauropod trackway in the world.
CEDAR BRAKE OUTER LOOP	7.5 mi.	3.5 hrs.	Moderate	This long trail takes you on a looping tour of the park atop limestone ridges crowned by cedar brakes.
BLACK-CAPPED VIREO TRAIL	2.7 mi.	1.25 hrs.	Moderate	Endangered black-capped vireos nest in these shrubby woodlands.
DENIO TRAIL	1.6 mi	45 min.	Moderate	Watch for endangered golden-cheeked warblers along this winding trail beside Denio Creek.
BUCKEYE TRAIL	1.3 mi.	45 min.	Moderate	If you're lucky, you may see some small waterfalls along this trail beside Buckeye Creek.
ROCKY RIDGE TRAIL	1.0 mi.	30 min.	Moderate	Stop and enjoy the views at the scenic overlooks on this high ridge trail.
OAK SPRINGS TRAIL	0.3 mi.	10 min.	Easy	Look for natural, bubbling springs as you walk this winding trail through oak woodlands.
OVERLOOK TRAIL (Hiking Only)	0.5 mi.	30 min.	Easy	The view of the Paluxy River Valley from the overlook is worth the climb.
HORSESHOE EQUESTRIAN TRAIL (No Biking)	2.6 mi.	1 hr.	Easy	Explore the bluestem grasslands along the edge of the Paluxy River.
PALUXY RIVER TRAIL	1.9 mi.	1.3 hrs.	Easy	Discover many different dinosaur tracks as you meander the limestone ledge of the Paluxy River.
MONARCH TRAIL	0.5 mi.	15 min.	Easy	As you meander through the trees stay alert for fluttering birds and butterflies.
DISCOVERY LOOP TRAIL	0.1 mi.	10 min.	Easy	Introduce the kids to the wonders of nature on this easy, educational trail.