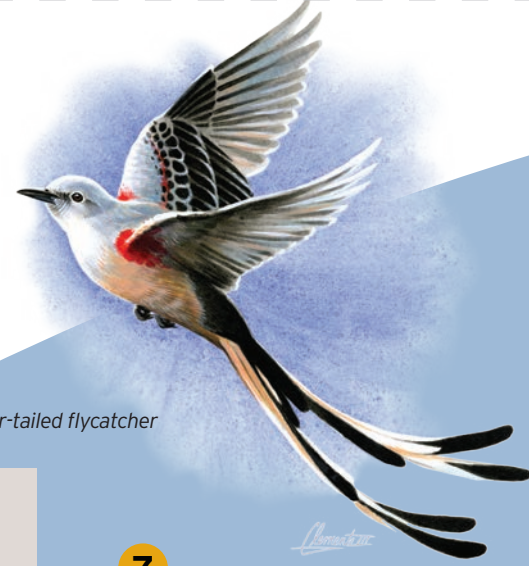




Lake Brownwood State Park Trails Map

200 Park Rd. 15
Brownwood, TX 76801
(325) 784-5223
www.texasstateparks.org

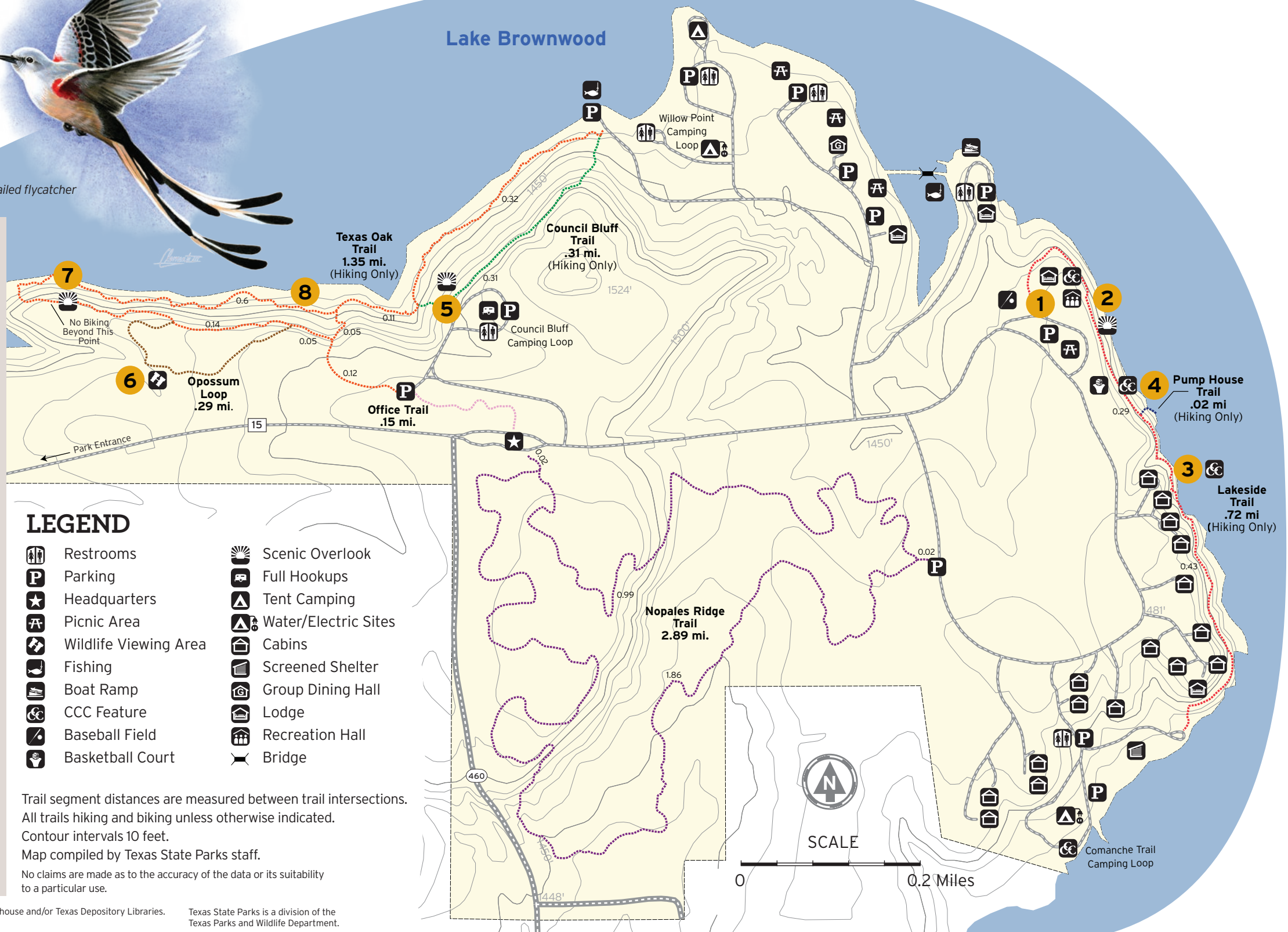


Scissor-tailed flycatcher

POINTS OF INTEREST

(GPS coordinates shown in degrees, minutes, seconds)

- 1 CCC AND 36th DIVISION MEMORIAL MONUMENTS**
31° 51' 33.300" N 99° 1' 4.920" W
Take a moment to honor the Civilian Conservation Corps that built the park, and the valiant 36th Army Infantry Division that gave its name to the park from 1946 - 1956.
- 2 CCC GRAND STAIRWAY**
31° 51' 32.940" N 99° 1' 2.100" W
After enjoying the view from the pavilion, take the terraced stone stairway down to the lake.
- 3 CCC PICNIC SITE**
31° 51' 22.500" N 99° 0' 56.340" W
Enjoy the view from the natural stone benches and tables along the lakeshore.
- 4 CCC WATER PUMPHOUSE**
31° 51' 26.700" N 99° 0' 57.780" W
See the original water works for the park!
- 5 COUNCIL BLUFF PAVILION AND OVERLOOK**
31° 51' 32.580" N 99° 1' 46.740" W
Enjoy a scenic view of the lake from a charming rock pavilion.
- 6 WILDLIFE VIEWING BLIND**
31° 51' 28.440" N 99° 2' 8.820" W
Discover birds and other wildlife that live in the park.
- 7 TEXAS OAK TRAIL OVERLOOK**
31° 51' 33.780" N 99° 2' 12.720" W
View the lake from a rugged outcrop of limestone boulders.
- 8 LIMESTONE BOULDERS**
31° 51' 32.940" N 99° 1' 56.460" W
Look for small lichens and ferns growing in the limestone cracks.



LEGEND

- | | | | |
|--|-----------------------|--|----------------------|
| | Restrooms | | Scenic Overlook |
| | Parking | | Full Hookups |
| | Headquarters | | Tent Camping |
| | Picnic Area | | Water/Electric Sites |
| | Wildlife Viewing Area | | Cabins |
| | Fishing | | Screened Shelter |
| | Boat Ramp | | Group Dining Hall |
| | CCC Feature | | Lodge |
| | Baseball Field | | Recreation Hall |
| | Basketball Court | | Bridge |

Trail segment distances are measured between trail intersections.
All trails hiking and biking unless otherwise indicated.
Contour intervals 10 feet.
Map compiled by Texas State Parks staff.
No claims are made as to the accuracy of the data or its suitability to a particular use.

In accordance with Texas State Depository Law, this publication is available at the Texas State Publications Clearinghouse and/or Texas Depository Libraries.
© 2018 Texas Parks and Wildlife Department PWD MP P4506-0009J (7/18)

Texas State Parks is a division of the Texas Parks and Wildlife Department.

TPWD receives funds from the USFWS. TPWD prohibits discrimination on the basis of race, color, religion, national origin, disability, age, and gender, pursuant to state and federal law. To request an accommodation or obtain information in an alternative format, please contact TPWD on a Text Telephone (TDD) at (512) 389-8915 or by Relay Texas at 7-11 or (800) 735-2989. If you believe you have been discriminated against by TPWD, please contact TPWD or the U.S. Fish and Wildlife Service, Office for Diversity and Workforce Management, 5275 Leesburg Pike, Falls Church, VA 22041.

Lake Brownwood State Park



A Legacy in Limestone

Welcome to Lake Brownwood State Park, one of the most extensively developed Civilian Conservation Corps (CCC) parks in Texas. Enjoy the handiwork of the CCC men who constructed the rustic limestone cabins, and the outdoor seating areas you'll find along the trails.

STAYING SAFE

KNOW YOUR LIMITS. Prepare for sun and heat. Wear sunscreen, insect repellent and appropriate clothing/hiking shoes.

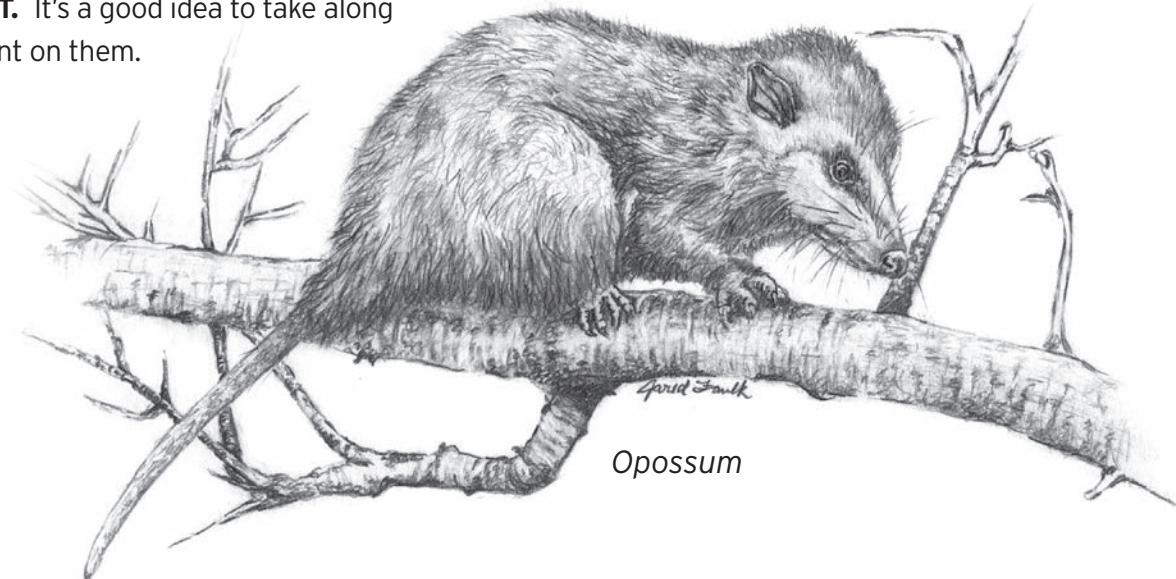
DRINK PLENTY OF WATER. Your body quickly loses fluids when you're on the trail. Bring a quart of water per hour of activity.

TELL OTHERS WHERE YOU'LL BE. If possible, avoid exploring alone. Tell someone where you are going and when you plan to return.

WEAR A HELMET. When biking, check with park HQ to match the trail to your skill level. Wear a helmet to protect yourself in case of a crash.

POTENTIALLY HARMFUL PLANTS AND ANIMALS MAY LIVE HERE. Staying on the trail makes them easier to see. Do not approach wildlife!

YOU MAY NOT BE ABLE TO CONNECT. It's a good idea to take along a cell phone and GPS unit, but don't count on them.



FOR EMERGENCIES, PLEASE CALL 9-1-1.

TRAIL	DISTANCE	TIME	DIFFICULTY	DESCRIPTION
 TEXAS OAK TRAIL	1.35 mi.	45 min.	Moderate	You'll find at least three kinds of Texas oaks along this trail. In addition to the Texas red oak, you'll also see post oaks and live oaks.
 OPOSSUM LOOP	.29 mi.	30 min.	Easy	Watching for wildlife? Look for opossums, white-tailed deer and wild turkeys along the trail or at the viewing blind.
 COUNCIL BLUFF TRAIL	.31 mi.	30 min.	Moderate	Climb the stone steps along the trail and enjoy the view from the bluffs overlooking the lake.
 LAKESIDE TRAIL	.72 mi.	45 min.	Moderate	Enjoy the legacy of the CCC as you hike this historic trail connecting the campground and cabins to the day-use area. Rest at the "outdoor living rooms," unique rustic limestone tables and benches that provide awesome views of Lake Brownwood.
 PUMP HOUSE TRAIL	.02 mi.	10 min.	Moderate	Take this short spur trail to see the original stone pump house built by the CCC enrollees to provide water for the park.
 NOPALES RIDGE TRAIL	2.89 mi.	2.5 hrs.	Moderate	Watch out for the sharp spines on the prickly pear (nopal) cacti as you bike or hike this trail. You'll also find twisted-leaf yuccas; the scientific name means "lover of rock."

TRAIL ETIQUETTE

Trash your trash. Keep the park natural. Pack out all of your trash and Leave No Trace.

Leave feeding to nature. Feeding wild animals will make them sick and more likely to cause harm to people.

Take only memories and pictures. Please don't disturb or remove any of the park's plants, animals or artifacts.

Keep pets on leashes to keep them safe, while protecting wildlife.