

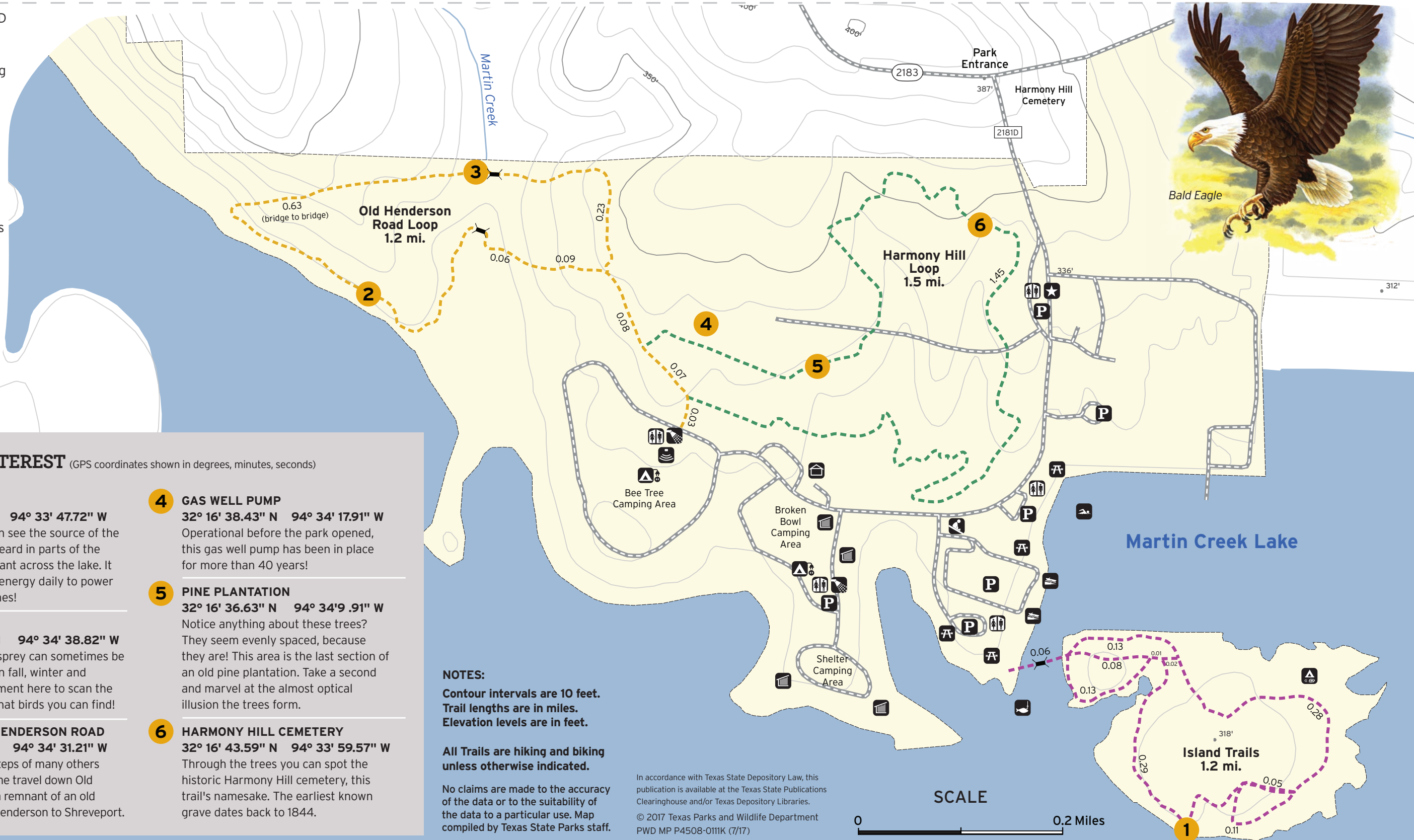


# Martin Creek Lake State Park Trails Map

9515 County Road 2181 D  
Tatum, TX 75691  
(903) 836-4336  
www.texasstateparks.org

## LEGEND

- Headquarters
- Parking
- Restrooms
- Showers
- Tent Sites
- Water/Electric Sites
- Screened Shelters
- Playground
- Amphitheater
- Picnic Area
- Boat Ramp
- Fishing Pier
- Primitive Camping
- Cabin
- Swimming



## POINTS OF INTEREST (GPS coordinates shown in degrees, minutes, seconds)

- 1 POWER PLANT**  
32° 16' 12.53" N 94° 33' 47.72" W  
From here, you can see the source of the humming sound heard in parts of the park: the power plant across the lake. It produces enough energy daily to power over a million homes!
- 2 BIRDING**  
32° 16' 40.20" N 94° 34' 38.82" W  
Bald eagles and osprey can sometimes be seen on this lake in fall, winter and spring. Take a moment here to scan the waters, and see what birds you can find!
- 3 HISTORIC OLD HENDERSON ROAD**  
32° 16' 46.70" N 94° 34' 31.21" W  
Follow in the footsteps of many others before you, and time travel down Old Henderson Road, a remnant of an old trade route from Henderson to Shreveport.
- 4 GAS WELL PUMP**  
32° 16' 38.43" N 94° 34' 17.91" W  
Operational before the park opened, this gas well pump has been in place for more than 40 years!
- 5 PINE PLANTATION**  
32° 16' 36.63" N 94° 34' 9.91" W  
Notice anything about these trees? They seem evenly spaced, because they are! This area is the last section of an old pine plantation. Take a second and marvel at the almost optical illusion the trees form.
- 6 HARMONY HILL CEMETERY**  
32° 16' 43.59" N 94° 33' 59.57" W  
Through the trees you can spot the historic Harmony Hill cemetery, this trail's namesake. The earliest known grave dates back to 1844.

**NOTES:**  
Contour intervals are 10 feet.  
Trail lengths are in miles.  
Elevation levels are in feet.

All Trails are hiking and biking unless otherwise indicated.

No claims are made to the accuracy of the data or to the suitability of the data to a particular use. Map compiled by Texas State Parks staff.

In accordance with Texas State Depository Law, this publication is available at the Texas State Publications Clearinghouse and/or Texas Depository Libraries.  
© 2017 Texas Parks and Wildlife Department  
PWD MP P4508-0111K (7/17)

SCALE

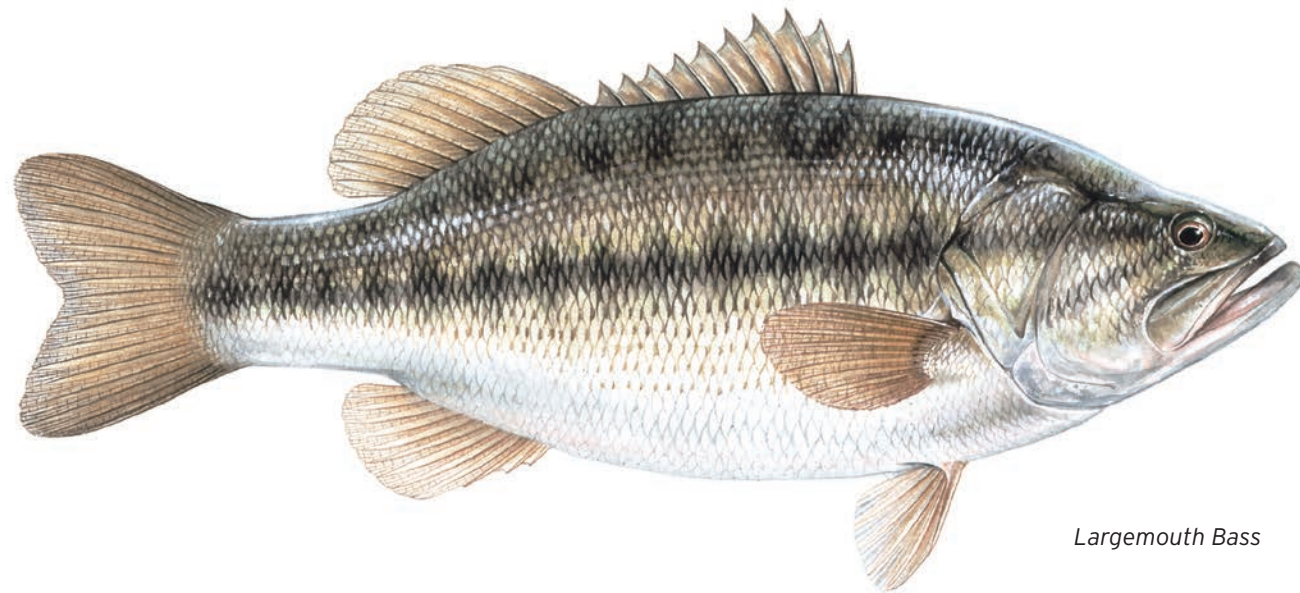


TPWD receives funds from the USFWS. TPWD prohibits discrimination on the basis of race, color, religion, national origin, disability, age, and gender, pursuant to state and federal law. To request an accommodation or obtain information in an alternative format, please contact TPWD on a Text Telephone (TDD) at (512) 389-8915 or by Relay Texas at 7-11 or (800) 735-2989. If you believe you have been discriminated against by TPWD, please contact TPWD or the U.S. Fish and Wildlife Service, Office for Diversity and Workforce Management, 5275 Leesburg Pike, Falls Church, VA 22041.

FOR EMERGENCIES, PLEASE CALL 9-1-1.

## A haven among the pines.

At Martin Creek Lake State Park, anglers young and old seek the next big one in the lake, and shaded campsites and trails offer refuge to visitors. Kick back and relax while you're here.



Largemouth Bass

### STAYING SAFE




**KNOW YOUR LIMITS.** Prepare for sun and heat. Wear sunscreen, insect repellent and appropriate clothing/hiking shoes.

**DRINK PLENTY OF WATER.** Your body loses fluid quickly when you're on the trail. Bring a quart of water per hour of activity.

**TELL OTHERS WHERE YOU'LL BE.** If possible, avoid exploring alone. Tell someone where you are going and when you plan to return.

**WEAR A HELMET.** When mountain biking, check with park HQ to match the trail to your skill level. Wear a helmet to protect yourself in case of a crash.

**POTENTIALLY HARMFUL PLANTS AND ANIMALS LIVE HERE.** You'll see them more easily if you stay on trails.

TRAIL	DISTANCE	DIFFICULTY	DESCRIPTION
 <b>OLD HENDERSON ROAD LOOP</b>	1.2 mi.	Moderate	Feel history come alive, as you travel down Old Henderson Road, a former trade route between the towns of Henderson and Shreveport.
 <b>HARMONY HILL LOOP</b>	1.5 mi.	Easy	This path winds through a dense forest, skirting the edge of the former community of Harmony Hill, now a Nationally Registered Historic District. Peer through the trees to catch a glimpse of the town's cemetery.
 <b>ISLAND TRAILS</b>	1.2 mi.	Easy	Take a walk on the wild side! Explore tall pines and open grasslands, and maybe spot a deer! How do you think the deer got on the island?

### TRAIL ETIQUETTE

**Trash your trash.** Keep the park natural. Pack out all of your trash and Leave No Trace.

**Leave feeding to nature.** Feeding wild animals will make them sick and more likely to cause harm to people.

**Take only memories and pictures.** Please don't disturb or remove any of the park's plants, animals or artifacts.

**Keep pets on leashes** to keep them safe, while protecting wildlife.



Opossum