



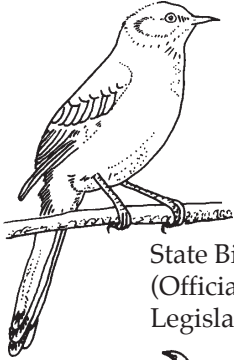
Texas State Symbols



State Song: "**Texas, our Texas**"
(Music by Wm. J. Marsh; words by Marsh and Gladys Yoakum Wright; officially adopted by the Legislature in 1929)

State Motto: **Friendship**
("Tejas" is a Caddo Indian word meaning "friend")

Texas State Seal
(Office of the Secretary of State)



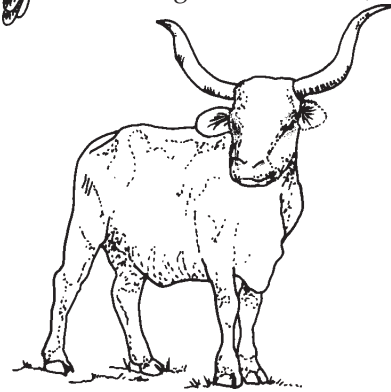
State Tree: **Pecan**
(Officially adopted in 1919)



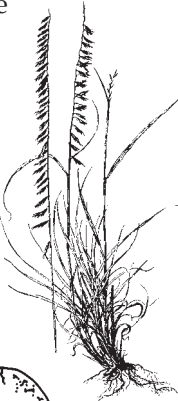
State Flower: **Bluebonnet**
(Several varieties of this lupine blanket the Texas countryside each spring. Officially adopted in 1901)

State Bird: **Northern Mockingbird**
(Officially recognized by the Legislature in 1927)

State Food: **Chili**
(A fiery stew brewed with Texas pride, adopted by the Legislature in 1977)

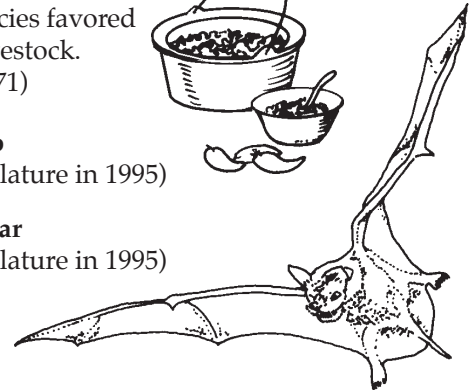


State Grass: **Sideoats Grama**
(A nutritious native species favored by wildlife as well as livestock. Officially adopted in 1971)



State Pepper: **Jalapeño**
(Adopted by the Legislature in 1995)

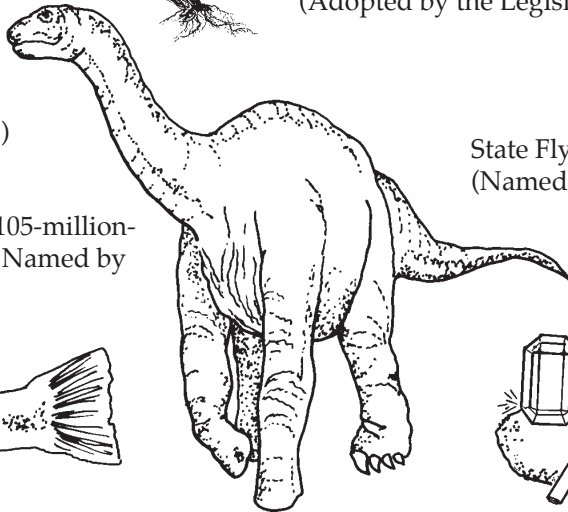
State Plant: **Prickly Pear**
(Adopted by the Legislature in 1995)



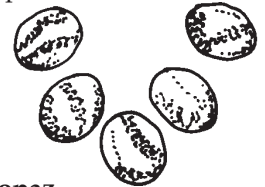
State Large Mammal: **Longhorn**
(Named by the Legislature in 1995)

State Flying Mammal: **Mexican Free-tailed Bat**
(Named by the Legislature in 1995)

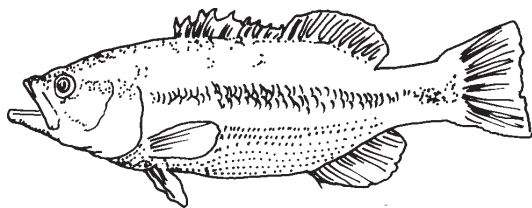
State Dinosaur: **Pleurocoelus**
(A sixty-foot-long sauropod from 105-million-year-old deposits in central Texas. Named by the Legislature in 1997)



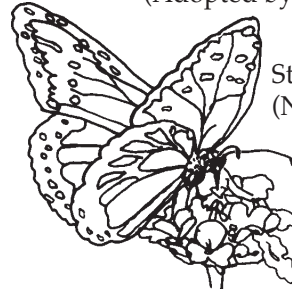
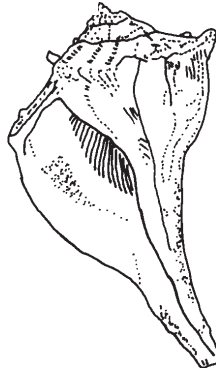
State Stone: **Petrified Palmwood**
(Abundant and of great variety. Officially adopted in 1969)



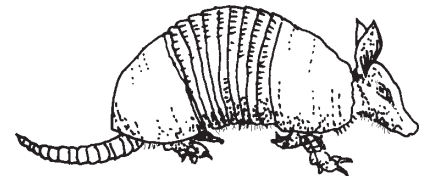
State Fish: **Guadalupe Bass**
(Named by the Legislature in 1980)



State Gemstone: **Texas Blue Topaz**
(Adopted by the Legislature in 1969)



State Insect: **Monarch Butterfly**
(Named by the Legislature in 1995)



State Reptile: **Horned Lizard**
(Named by the Legislature in 1993)

State Seashell: **Lightning Whelk**
(Adopted by the Legislature in 1987)

State Small Mammal: **Nine-banded Armadillo**
(Named by the Legislature in 1995)