

Visit www.tpwd.texas.gov/outdoor-annual
for the most current regulations.

Other info: www.texasstateparks.org

SEA RIM STATE PARK

P.O. Box 1066 · Sabine Pass, TX 77656
(409) 971-2559



Life's better outside.®

Local Emergency: Park Office (409) 971-2559
Jefferson County Sheriff (409) 835-8411
U.S. Coast Guard, Sabine Station (409) 971-2194

Where to Fish: There are two fishing options for visitors at Sea Rim State Park:

- 1) Surf Fishing in the Gulf of Mexico (no lifeguard provided)
- 2) Marsh Lakes and Estuaries (requires a shallow-draft, 18' maximum if launching from the park's boat ramp).

Marshlands Unit – fishing is permitted only between sunrise and sunset; only rod and reel, handline, throwline, crab net, cast net, pole or fishing bow and arrow are permitted.

Licenses and Restrictions: A fishing license is not required of anyone who fishes from the pier or shoreline inside a state park. License requirements must be observed if you fish from a boat and all size and bag limits apply whenever fishing. No fishing equipment, lines, boats or nets may be left unattended. Airboats in excess of 10 horsepower are prohibited in the Marshlands Unit.

Fishing Tips:

- 20-lb. test line
- Topwater lures, such as "Ghost" or "Top Dogs" for surf fishing
- Soft plastic lures in assorted colors, such as shrimptails or shad for surf fishing
- Live minnows, frozen or live mullet, or live shrimp are recommended baits for trout or red drum. See mullet restriction below.

Mullet Restriction: Mullet 12" or greater may not be taken from public waters or possessed on board a boat from October through January.

HARVEST REGULATIONS

SPECIES	DAILY BAG LIMIT	LENGTH: MIN-MAX	SURF/MARSH	SEASON
Gar: alligator	1	No Limit	Marsh	Year-round
Amberjack: greater	1	Min: 34" – Max: No Limit	Surf	Spring/Summer
Bass: largemouth	5	Min: 14" – Max: No Limit	Marsh	Spring/Summer/Fall
Crab: blue	No Limit	Min: 5" tip to tip – Max: No Limit*	Both	Spring/Summer/Fall
Catfish: channel, blue and hybrid	25 (in any combination)	Min: 12" – Max: No Limit	Both	Year-round
Catfish: flathead	5	Min: 18" – Max: No Limit	Both	Year-round
Catfish: gafftopsail	No Limit	Min: 14" – Max: No Limit	Both	Year-round
Crappie: white, black and hybrids	25 (in any combination)	Min: 10" – Max: No Limit	Marsh	Year-round
Croaker: Atlantic	No Limit	No Limit	Both	Year-round
Drum: black	5	Min: 14" – Max: 30" ^a	Both	Year-round
Drum: red	3	Min: 20" – Max: 28" ^b	Both	Year-round
Flounder: all species and hybrids	5/2 ^c (in any combination)	Min: 14" – Max: No Limit	Both	Spring/Summer/Fall
Mackerel: king	2	Min: 27" – Max: No Limit	Surf	Spring/Summer
Mackerel: Spanish	15	Min: 14" – Max: No Limit	Surf	Spring/Summer
Seatrout: sand	No Limit	No Limit	Surf	Spring/Summer
Seatrout: spotted	5	Min: 15" – Max: 25" ^d	Surf/Marsh	Spring/Summer/Fall
Shark: Atlantic Sharpnose, Blacktip and Bonnethead ^e	1 ^f	Min: 24" – Max: No Limit	Surf	Summer
Shark: Other allowable ^{e,f}		Min: 64" – Max: No Limit	Surf	Summer
Sheepshead	5	Min: 12" – Max: No Limit	Both	Year-round
Snapper: lane	No Limit	Min: 8" – Max: No Limit	Surf	Summer
Snapper: vermilion	No Limit	Min: 10" – Max: No Limit	Surf	Summer
Snook	1	Min: 24" – Max: 28"	Surf	Year-round
Kingfish: southern (also called whiting)	No Limit	No Limit	Surf	Winter/Spring
Stingray: southern	No Limit	No Limit	Surf	Spring/Summer
Tarpon	1	Min: 85" – Max: No Limit	Surf	Summer

* Except that not more than 5% by number of undersized blue crabs may be possessed for bait purposes only and must be placed in separate container. May not possess egg-bearing (sponge) crabs. May not possess a female crab that has had its abdominal apron removed.

a No more than one black drum over 52 inches may be retained per person per day. This fish counts as part of the daily bag and possession limit.

b During a license year, one red drum over the stated maximum length limit may be kept with a properly completed Red Drum Tag attached and one red drum over the stated maximum length limit may be kept with a properly completed Bonus Red Drum Tag. Any fish retained under authority of a Red Drum Tag or a Bonus Red Drum Tag is in addition to the daily bag and possession limit.

c Daily bag and possession limit is 5 fish except November 1 – December 14, when limit is 2 fish. From November 1-30, flounder may be taken only by pole and line (no gigging.)

d No more than one spotted seatrout over 25" may be kept per person per day. This fish counts as part of the daily bag and possession limit.

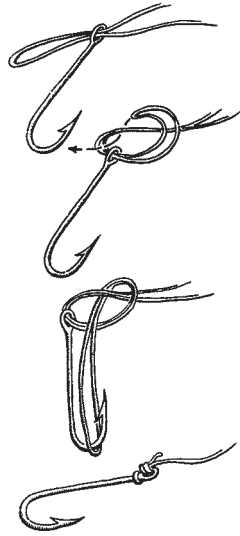
e Non-offset, non-stainless steel circle hooks MUST be used when fishing for sharks in state waters.

f Special Regulation: the daily bag limit is 1 fish for all allowable shark species INCLUDING Atlantic sharpnose, blacktip and bonnethead. Prohibited shark species: Atlantic angel, Basking, Bigeye sand tiger, Bigeye sixgill, Bigeye thresher, Bignose, Caribbean reef, Caribbean sharpnose, Dusky, Galapagos, Longfin mako, Narrowtooth, Night, Oceanic Whitetip, Sandbar, Sand tiger, Sevengill, Silky, Sixgill, Smalltail, Whale, White.

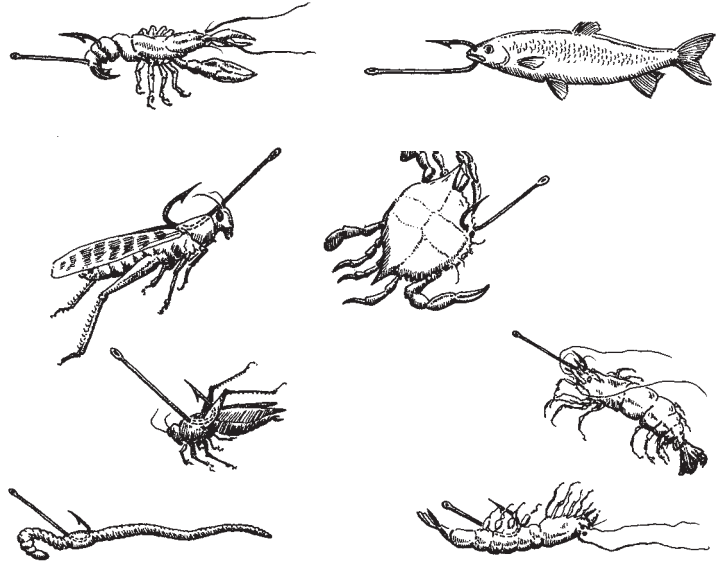
HANDY FISHING BASICS

HOW TO TIE A FISHING KNOT

The palomar knot is very strong and easy to tie.



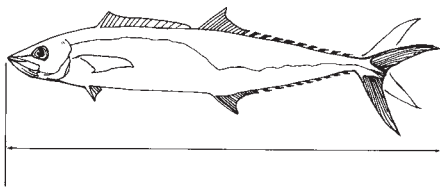
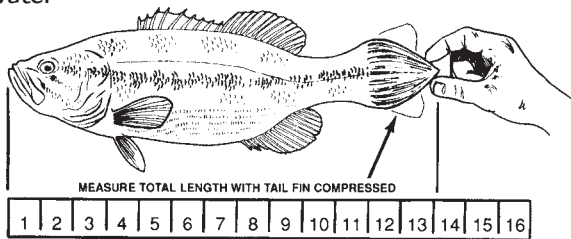
NATURAL BAIT HOOK PLACEMENT



HOW TO MEASURE FISH

Pinch the tail together and take the longest measurement from nose to tail.

Freshwater fish



Saltwater fish

TIPS FOR RELEASING FISH SAFELY

1. For safety for you and a quick release of fish, mash down the barb of the hook with pliers.
2. Quickly play and release fish as soon as possible (take photos quickly).
3. Remove hook with pliers or cut line if the hook has been swallowed.
4. Gently place fish back into water.
5. Revive fish by holding upright in water and facing it into the current, gently forcing water through gills.
6. If you don't intend to eat the fish, **NEVER** place it on a stringer.

SAFETY

- Wear a hat, sunglasses and sunscreen to protect your head, eyes and skin.
- Use insect repellent – but keep off hands, as you will be handling bait and live fish.
- Look behind you before each cast to avoid hooking someone or getting caught in a tree (practice casting before you go fishing).
- Bring plenty of drinking water to prevent dehydration; soft drinks encourage dehydration.
- Wear a life jacket if you cannot swim or you are uncomfortable around the water. Supervise young children: it only takes a second for them to slip under the surface. Kids under 13 must wear life jackets if fishing from a boat.

FISHING ETHICS

Before doing anything, ask yourself the following questions:

- *Is it legal?*
- *Would it be good if everyone did it?*
- *Would it make you proud?*

Ethical behavior is more than just following the fishing regulations. Ethical people go beyond what laws require and demonstrate good judgment and behavior for everyone – even if no one sees you do something ethical.

Ethical behavior includes picking up trash around the area you have been fishing, calmly and politely explaining to others if they are breaking fishing regulations, and respecting the rights of other anglers and those that use the water in other ways.