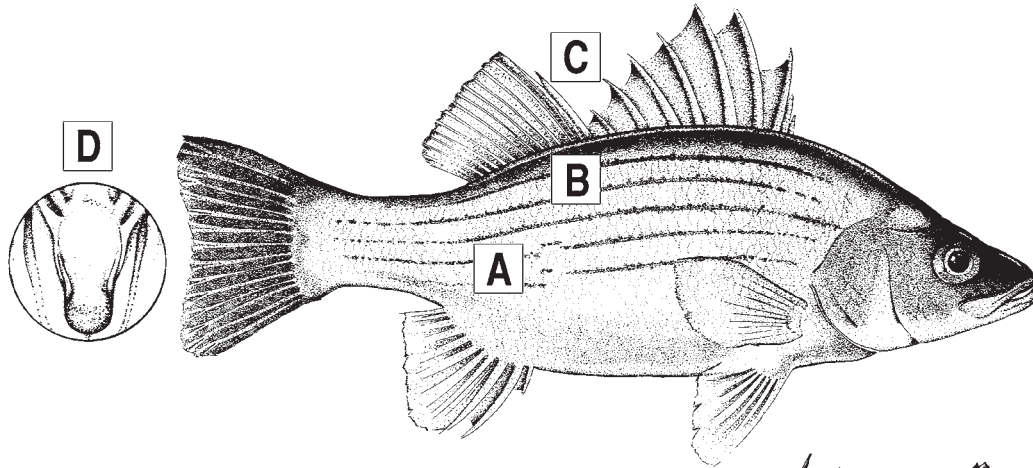


Identifying Yellow, White, Striped and Hybrid Striped Bass

The following characteristics may be used in identifying species:

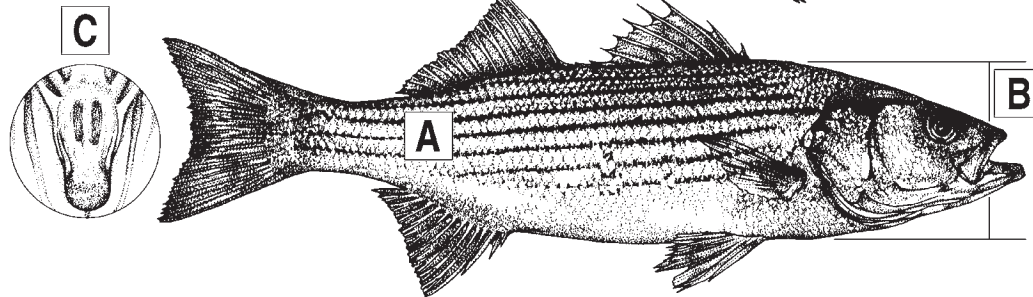
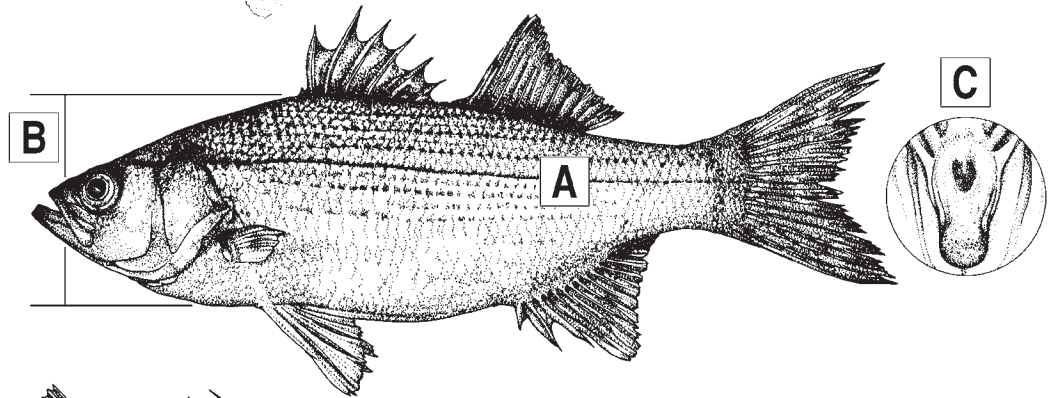


Yellow Bass

- A** Stripes distinct, broken above anal fin.
- B** Color - silvery yellow.
- C** Dorsal fins joined.
- D** Does not have a tooth patch near the midline towards the back of the tongue.

White Bass

- A** Stripes faint, only one extends to tail.
- B** Body deep, more than 1/3 length.
- C** Has one tooth patch near the midline towards the back of the tongue.

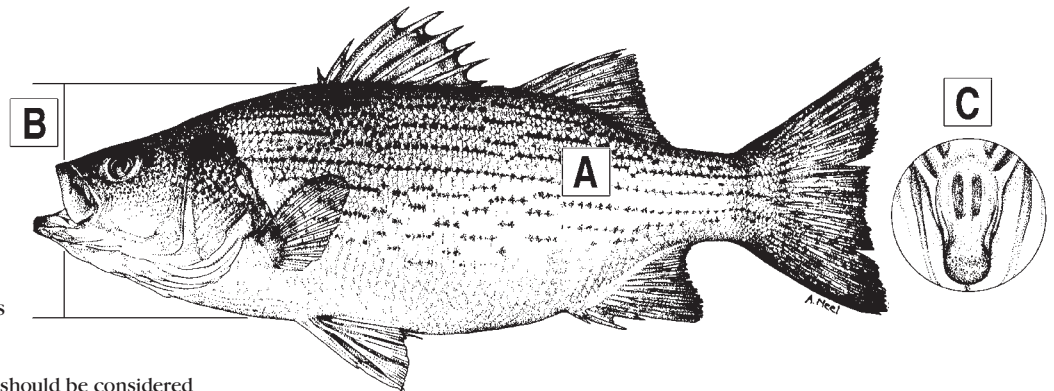


Striped Bass

- A** Stripes distinct, several extend to tail.
- B** Body slender, less than 1/3 length.
- C** Has two, distinct tooth patches near the midline towards the back of the tongue.

Hybrid Striped Bass

- A** Stripes distinct, usually broken, several extend to tail.
- B** Body deep, more than 1/3 length.
- C** Has two tooth patches near the midline on the back of the tongue. Tooth patches may be distinct or close together.



Note: For hybrid striped bass, all characteristics should be considered for identification as characteristics in individual fish may vary.

