

BASTROP COUNTY COMPLEX WILDFIRE

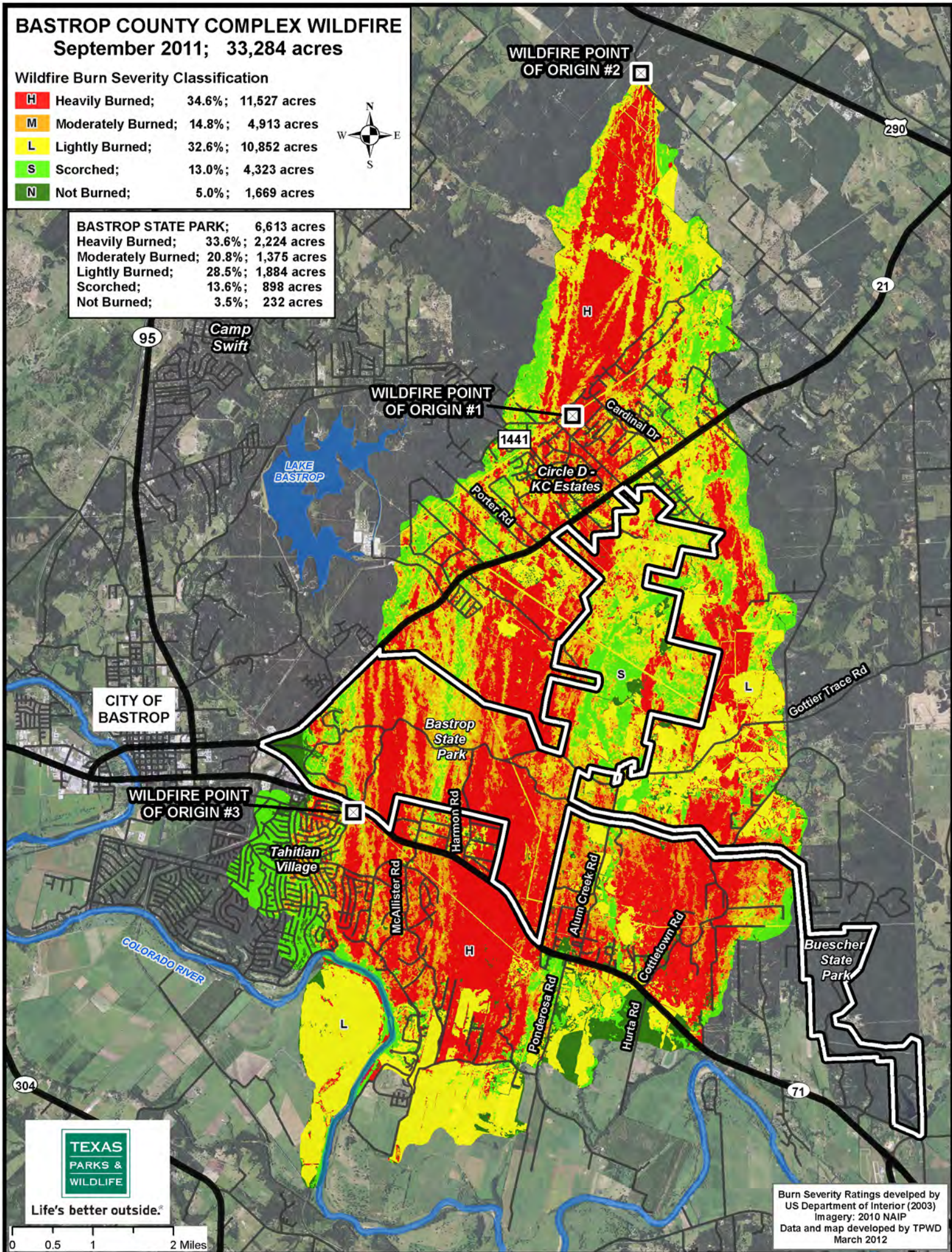
September 2011; 33,284 acres

Wildfire Burn Severity Classification

H	Heavily Burned;	34.6%;	11,527 acres
M	Moderately Burned;	14.8%;	4,913 acres
L	Lightly Burned;	32.6%;	10,852 acres
S	Scorched;	13.0%;	4,323 acres
N	Not Burned;	5.0%;	1,669 acres



BASTROP STATE PARK;	6,613 acres
Heavily Burned;	33.6%; 2,224 acres
Moderately Burned;	20.8%; 1,375 acres
Lightly Burned;	28.5%; 1,884 acres
Scorched;	13.6%; 898 acres
Not Burned;	3.5%; 232 acres



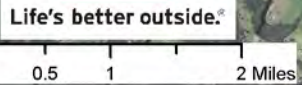
CITY OF BASTROP

WILDFIRE POINT OF ORIGIN #3

Tahitian Village

Bastrop State Park

Buescher State Park



Burn Severity Ratings developed by US Department of Interior (2003)
 Imagery: 2010 NAIP
 Data and map developed by TPWD
 March 2012