

**Definitions**

**Trails\*** – A travel way defined by a natural surface path or series of rock cairns and/or other identifiable markings which can be navigated on foot, stock or MTB bicycle as designated. All trails are non-motorized use only.

\* Visitors should check with park staff prior to traveling any trails to determine conditions or appropriateness of use, especially equestrian or mountain bike users.

**Road Trace** – An unmaintained remnant of a previous road or vehicular travelway in the park. No vehicular access is permitted.

**Graded (2WD)** – Graded, unpaved road passable by standard street legal vehicles when driven responsibly. Main park road and selected campsite and road spurs. Regularly maintained. Full size spare tire recommended.

**2WD High Clearance (2 Wheel Drive High Clearance)** – Unpaved road normally passable by standard street legal vehicles with high ground clearance. Clearance necessitated by typical road or route conditions (obstacles, steep dips, etc.). Not maintained continuously.

**4-Wheel Drive (4WD, also may include HC All Wheel Drive)** – Primitive roads similar to 2WDHC but requiring extra traction to accommodate steep grades, loose or soft substrates. Passage requires low-range gears occasionally. Jacks, shovels and multiple spare tires advised. Irregularly maintained.

**4-Wheel Drive - Unmaintained (4WD High Clearance)** – Primitive roads harsher than 4WD. Passage requires vehicles with extra traction, rigid suspension and high clearance. Four-wheel-drive required, E Load Range tires recommended. Jacks, shovels extraction gear and multiple spare tires advised. Some road building may be required.

**Park Information**

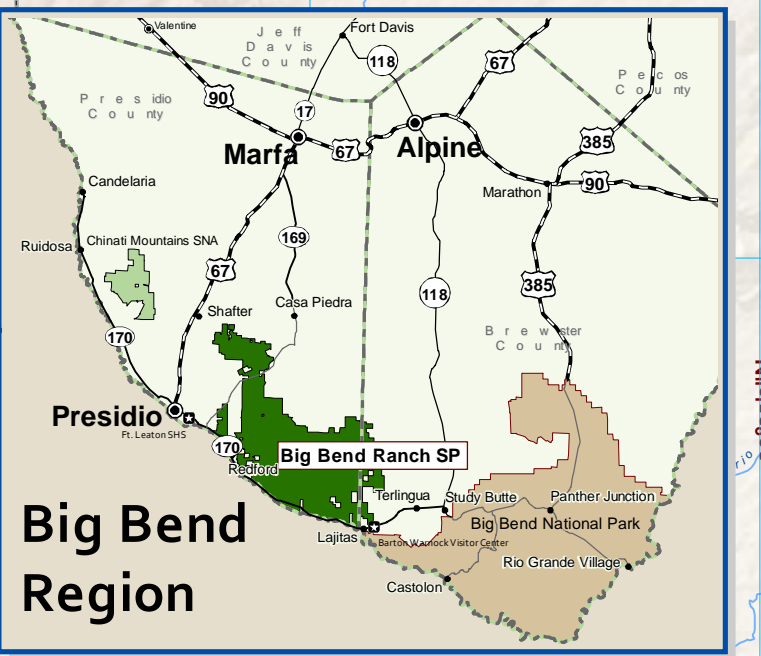
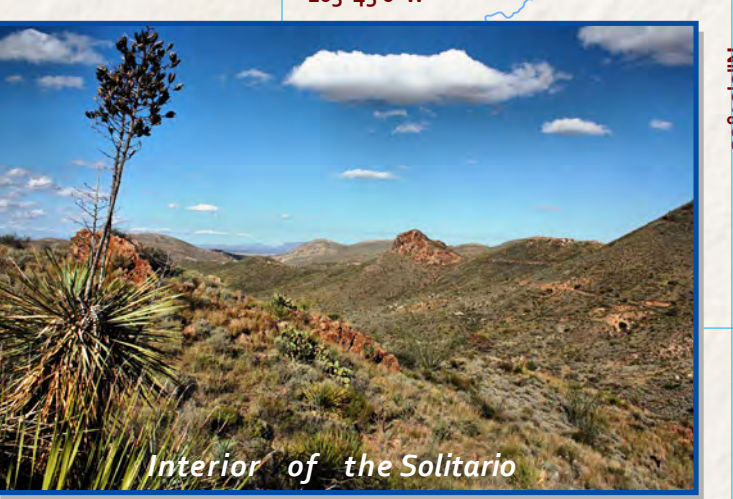
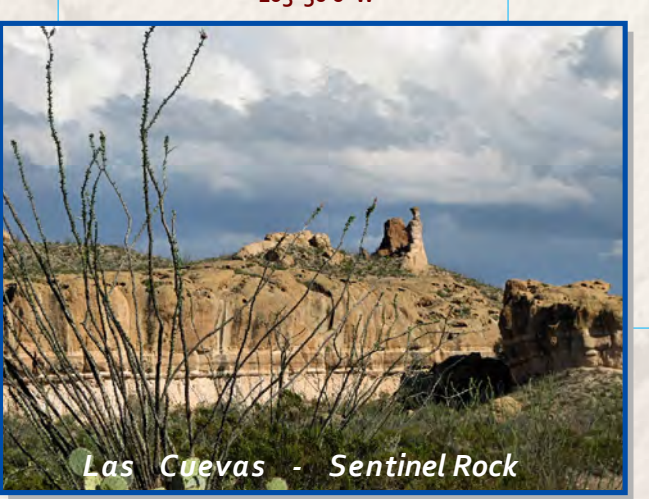
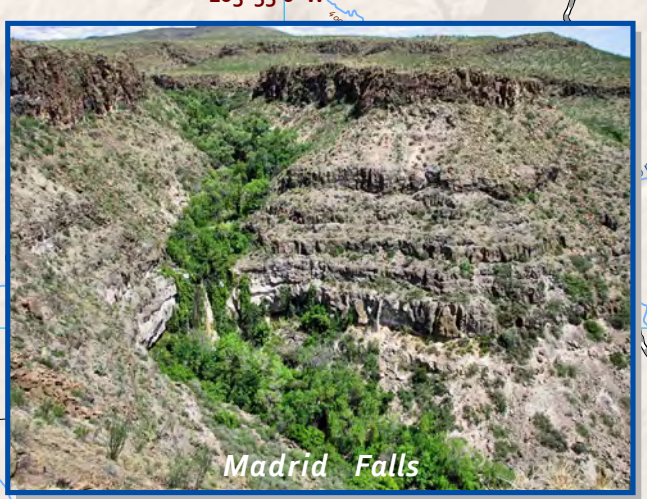
**Big Bend Ranch State Park**  
1900 South Saucedo Ranch Rd  
Marfa, TX 79843  
(432) 368-4444

**Barton Warnock Visitor Center**  
23800 FM 170  
Terlingua, TX 79852  
(432) 424-3327

**Fort Leaton State Historic Site**  
16953 FM 170 E  
Presidio, TX 79845  
(432) 229-3613

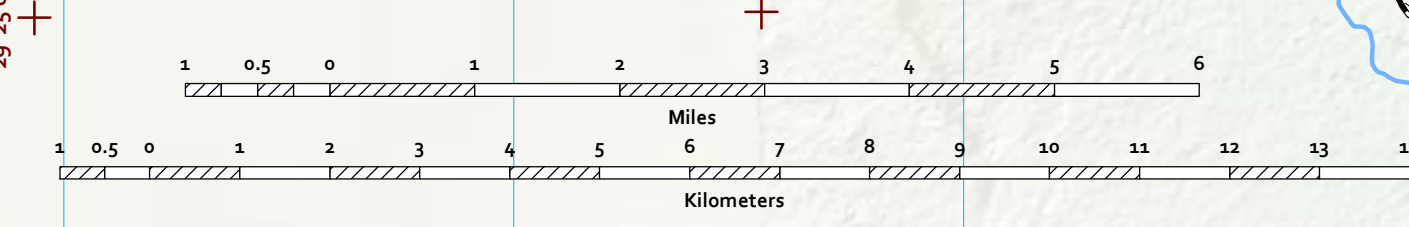
[tpwd.texas.gov](http://tpwd.texas.gov)

See Inset Map for Cienega Region

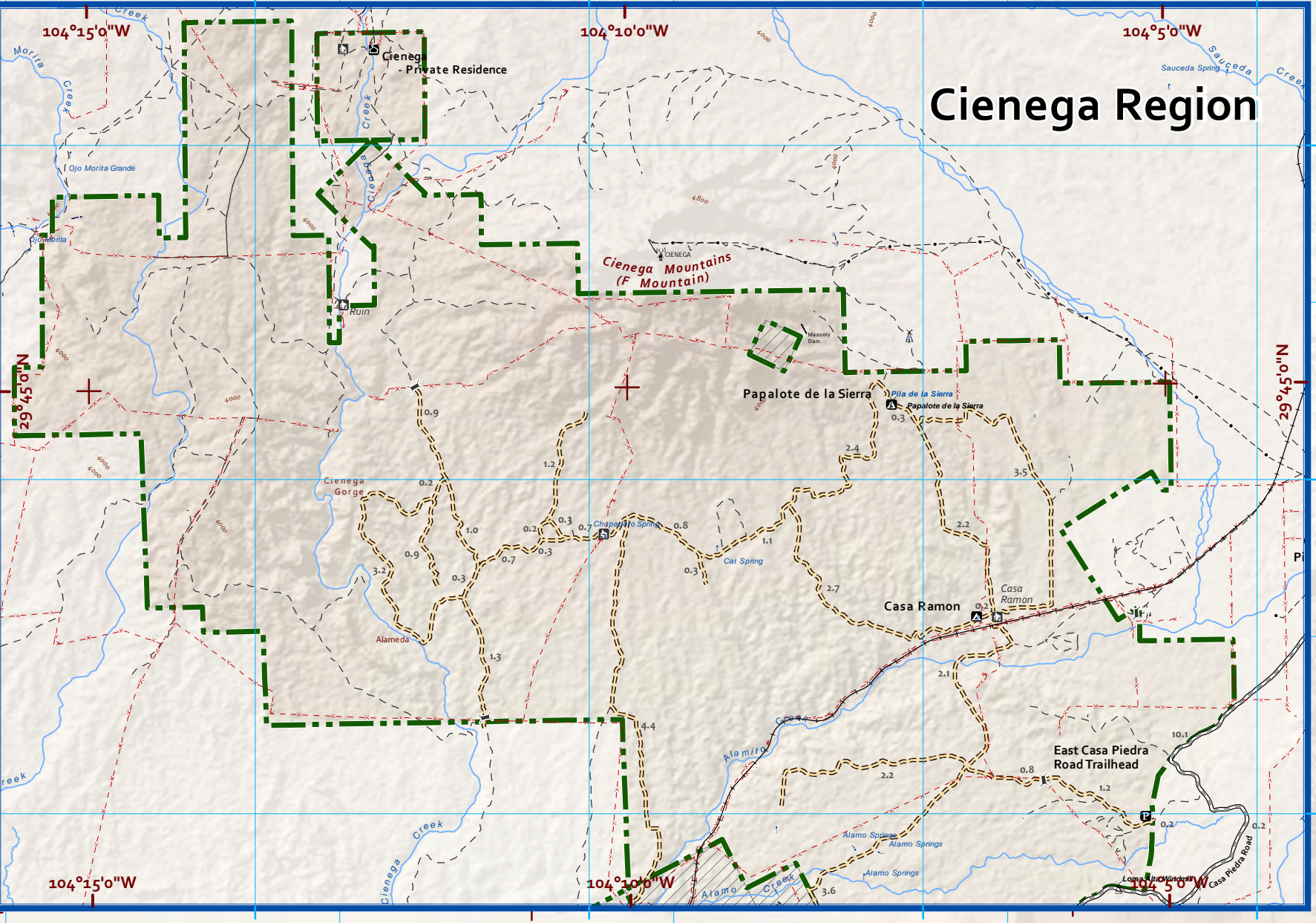


Texas State Parks  
- Fall 2017 -

# - Discovery Map - Big Bend Ranch State Park



Map prepared by Texas State Parks (Natural Resources) Planning & Geospatial Resources. Chris Beckson - Cartographer Dec 2017  
Traditional Place Names: D.H. Risken, Ruben Hernandez and F. Gallego



**Mobile Phones**  
Mobile phone coverage is random and unreliable throughout the park.  
**DO NOT** depend on your mobile phone to call for help in emergency situations.

**After Hours Emergency**  
Presidio County Sheriff's Office (432) 729-4308  
Brewster County Sheriff's Office (432) 837-3488

Mag. Declination 6° 55' E  
UTM Grid - UTM Zone 13 North, NAD83  
DMS Grid - Geographic, NAD83

Camping & Trailheads	Points of Interest	Miscellaneous	Transportation	Boundary
Campground	Ranger Station	Windmill	2WD High Clearance	Park Boundary
Campsite	Restrooms	Pile - Tank	4-Wheel Drive	Private Lands
Equestrian Campsite	Privy	Archeo Exhibit	4-Wheel Drive - Unmaintained	Masada Ridge Wilderness
Trailhead	Shower	Cave - Dam	County	Big Bend NP Bndry
River Access	Picnic Area	Prospect - Mine	Graded	Survey Monuments
Lodging	Scenic Overlook	Electrical Lines	Highway	County Line
Park Residence	Park Residence	Fence	Road Trace	
		Rock Wall	Railroad	